

# Association of maternal iodine status with child IQ: a meta-analysis of individual-participant data

**Levie D**, Korevaar TIM, Bath SC, Murcia M, Dineva M, Llop S, Espada M, van Herwaarden AE, de Rijke YB, Ibarluzea JM, Sunyer J, Tiemeier H, Rayman MP, Guxens M\*, Peeters RP.\*

\* Denotes equal contribution

*J Clin Endocrinol Metab.* 2019;104(12):5957-5967.

## Abstract

**Context:** Although the consequences of severe iodine deficiency are beyond doubt, the effects of mild to moderate iodine deficiency in pregnancy on child neurodevelopment are less well established.

**Objective:** To study the association between maternal iodine status during pregnancy and child IQ and identify vulnerable time windows of exposure to suboptimal iodine availability.

**Design:** Meta-analysis of individual participant data from three prospective population-based birth cohorts: Generation R (Netherlands), INMA (Spain), and ALSPAC (United Kingdom); pregnant women were enrolled between 2002 and 2006, 2003 and 2008, and 1990 and 1992, respectively.

**Setting:** General community.

**Participants:** A total of 6180 mother-child pairs with measures of urinary iodine and creatinine concentrations in pregnancy and child IQ. Exclusion criteria were multiple pregnancies, fertility treatment, medication affecting the thyroid, and preexisting thyroid disease.

**Intervention(s):** None.

**Main Outcome Measure:** Child non-verbal and verbal IQ assessed at 1.5 to 8 years of age.

**Results:** There was a positive curvilinear association of urinary iodine/creatinine ratio (UI/Creat) with mean verbal IQ only. UI/Creat  $<150 \mu\text{g/g}$  was not associated with lower non-verbal IQ (-0.6 point; 95% CI: -1.7 to 0.4 points;  $P=0.246$ ) or lower verbal IQ (-0.6 point; 95% CI: -1.3 to 0.1 points;  $P=0.082$ ). Stratified analyses showed that the association of UI/Creat with verbal IQ was only present up to 14 weeks of gestation.

**Conclusions:** Fetal brain development is vulnerable to mild to moderate iodine deficiency, particularly in the first trimester. Our results show that in future randomized controlled trials investigating the effect of iodine supplementation on child neurodevelopment in women with mild to moderate iodine deficiency, such supplementation should begin no later than the first trimester.

# Introduction

Iodine is an essential trace element required for the production of thyroid hormones; optimal thyroid hormone availability is important for normal fetal brain development<sup>1,2</sup>. During pregnancy, there is a higher demand for maternal iodine intake<sup>3,4</sup>. This is due to i) the increased maternal thyroid hormone synthesis required to ensure adequate thyroid hormone availability to the fetus, ii) greater urinary iodine loss due to an increased glomerular filtration rate, and iii) placental transfer of iodine to the fetus to facilitate fetal thyroid hormone production. Although severe iodine deficiency is no longer common in Europe, mild to moderate iodine deficiency is still common, especially in pregnant women<sup>5</sup>. Severe iodine deficiency in pregnancy results in a higher risk of goiter, hypothyroidism, and mental retardation in the offspring<sup>6</sup>. However, the consequences of mild to moderate iodine deficiency in pregnancy on child neurodevelopment are less well established<sup>4</sup>.

Mild to moderate iodine deficiency or low iodine intake during pregnancy has been associated with adverse child neurodevelopmental outcomes observed in some<sup>7–13</sup> but not all studies<sup>14–16</sup>. Differences in results between studies may be related to methodological differences (e.g., measurement of iodine status, selected reference group, and available data on confounders), the age at assessment of the neurodevelopmental outcome of interest, the timing of the iodine measurements, and the relative severity of iodine deficiency in the population. Although the main focus in the literature has been on the effects of iodine deficiency, some studies have suggested adverse effects of supplementary intake or excess iodine on either maternal thyroid function<sup>17,18</sup>, fetal thyroid function<sup>19,20</sup>, or child neurodevelopment<sup>10,15,16</sup>.

International health authorities have similar recommendations to ensure optimal iodine status in pregnancy<sup>21–23</sup>. It is universally recognized that any necessary iodine supplementation should be commenced before or as early as possible in pregnancy to achieve adequate iodine intake, owing to the susceptibility of the fetal brain to iodine deficiency<sup>23</sup>. However, whether the effect of iodine on child cognition varies during different stages of pregnancy is unknown. We therefore assessed the association between maternal iodine status in pregnancy and child IQ across three cohorts of differing iodine status and investigated potential effect modification by gestational age.

## Material and Methods

### Study design and populations

This study was embedded in three cohort studies: Generation R (the Netherlands), the Infancia y Medio Ambiente Project (INMA; Spain, three regions), and the Avon Longitudinal Study of Parents and Children (ALSPAC; United Kingdom). The study designs have been described elsewhere<sup>24–27</sup>; the ALSPAC study website contains details of all the data that

are available through a fully searchable data dictionary and variable search tool <sup>28</sup>. For the current study, mother-child pairs were included if a measure of urinary iodine and creatinine concentration during pregnancy and child IQ scores were available. Exclusion criteria were multiple pregnancies, fertility treatment, medication affecting the thyroid, and preexisting thyroid disease. Ethical approval was obtained from the Medical Ethical Committee of the Erasmus Medical Center (Generation R); the Ethical Committee of the Municipal Institute of Medical Investigation and the Ethical Committee of the hospitals involved in the study (INMA); and the ALSPAC Ethics and Law Committee and local research ethics committees; approval was given by participants and/or parents or guardians of the children by signed informed consent form.

### Maternal iodine status

Urinary iodine concentration (UIC) and creatinine concentration were measured in spot urine samples stored at -20°C after collection. As part of this study, additional urine samples were analyzed for iodine and creatinine concentrations, and existing measurements from each cohort <sup>7,19,29</sup> were also included. The additional measurements were performed in the same laboratories where the existing measurements were performed. The laboratories were registered with EQUIP and used certified reference materials (Seronorm Urine Levels one and two; Nycomed, Norway) for the verification of results. In Generation R, UIC was measured by the Sandell-Kolthoff method. In INMA, UIC was measured using paired-ion reversed-phase, high-performance liquid chromatography with electrochemical detection at a silver working electrode (Waters Chromatography, Milford, MA). In ALSPAC, UIC was measured on a dynamic reaction cell inductively coupled plasma mass spectrometer. Urinary creatinine concentration was determined by the Jaffe rate method in all cohorts. More information on the measurement methods and the variability between assays can be found in an online repository <sup>30</sup>.

In a subset of women, repeated measures of urinary iodine and creatinine were available; we used the earliest available sample as an indicator of iodine status. The urinary iodine/creatinine ratio (UI/Creat) was used as a measure of iodine status. Because of possible contamination of UIC by the use of iodine-containing test strips in ALSPAC <sup>31</sup>, UIC >500 µg/L and/or UI/Creat >700 µg/g was excluded from the analyses in this cohort (N=363). These cutoffs were based on previous work in ALSPAC and from other studies of pregnant women in the United Kingdom <sup>7,32,33</sup>. We grouped women's results by UI/Creat as follows: (i) <150 µg/g, (ii) 150 to < 500 µg/g, and (iii) ≥500 µg/g; according to the World Health Organization classification, these groups broadly relate to iodine deficiency, sufficiency, and excess, respectively.

## Maternal thyroid function

TSH and free thyroxine (FT4) were measured according to different methodologies between cohorts, which are described in detail elsewhere<sup>34–36</sup>. For the analysis, FT4 and TSH concentrations were logarithmically transformed, and cohort-specific SD scores were calculated with a mean of 0 and an SD of 1 based on the data of thyroid peroxidase antibody (TPOAb)-negative women (TPOAb measurements were available in Generation R and ALSPAC). TPOAb titres  $\geq 60$  IU/mL and  $\geq 6$  IU/mL were considered positive in Generation R and ALSPAC, respectively. These cutoffs were determined by the assay manufactures.

## Non-verbal and verbal IQ

In Generation R, non-verbal IQ was assessed at a median age of 5.9 years using a subset of the Snijders Oomen Nonverbal Intelligence Test (2.5-7-Revised)<sup>37</sup>, and verbal IQ was estimated by the short form of the McArthur Communicative Development Inventory<sup>38</sup> at a median age of 1.5 years. In INMA, non-verbal and verbal IQ scores were assessed at a median age of 4.6 years using McCarthy Scales of Children's Abilities<sup>39</sup>. In ALSPAC, non-verbal and verbal IQ scores were assessed at a median age of 8.6 years using the Wechsler Intelligence Scale for Children, third UK edition<sup>40</sup>. Except for verbal IQ ascertainment in Generation R, which involved a parental questionnaire, all other measurements were performed by psychologists or trained staff. To homogenize the different scores, raw cohort-specific scores were standardized to a mean of 100 and an SD of 15. Children with IQ scores  $<50$  or  $>150$  ( $n=3$ ) were considered as outliers and excluded from analyses. Suboptimal IQ was defined as an IQ score  $<85$ .

## Potential confounding variables

Information on maternal age, educational level (low, middle, high), ethnicity/country of birth (cohort-specific categories), parity (zero, one, two or more), pre-pregnancy body mass index, and smoking during pregnancy (never smoked, smoked in the beginning or until pregnancy confirmed, continued smoking) was collected by questionnaires administered during pregnancy. Gestational age at urine sampling was defined using ultrasonography or last menstrual period. Child sex and age at time of the IQ assessment was obtained during the study visits.

## Statistical analyses

UI/Creat was not normally distributed and was therefore transformed using the natural logarithm; back-transformed values are shown in plots for better interpretation. We studied the associations of UI/Creat with child non-verbal and verbal IQ by using one-step and two-step approaches. In the one-step approach, data from the cohorts were pooled, and we performed standard multivariable linear regression models with and without a quadratic term to investigate the possible non-linear nature of the associations. Non-linearity was also investigated by using ordinary least squares linear regression models with restricted cubic splines with three knots. With ANOVA, we tested the null hypothesis that child mean IQ was similar across

the full range of the natural logarithm of UI/Creat. The decision for linear regression models instead of multilevel models for the one-step analyses was made because we found no difference between multilevel models with random intercepts and/or slope per cohort vs standard linear regression correcting for cohort (e.g., cohort-specific variable ethnicity/country of birth) when assessed using the Akaike information criterion and log-likelihood tests. In the two-step approach we first studied the associations of UI/Creat < 150 µg/g and UI/Creat ≥ 500 µg/g with child IQ by using linear regression models in each cohort separately. In these analyses, the reference group consisted of women with UI/Creat of 150 to 500 µg/g. We then combined the cohort-specific effect estimates using random-effects meta-analyses.

Potential effect modification according to gestational age was analyzed by adding a product interaction term between UI/Creat and gestational age to the one-step approach models. Because of the known constraints of statistical power for interaction analyses, a *P* value <0.15 for interaction terms was used to screen for potential relevant modification<sup>41</sup>. We further quantified potential relevant differences by performing stratified analyses by tertiles of gestational age (≤12 weeks, >12 to ≤14 weeks, and >14 weeks). We also studied associations with suboptimal IQ (score <85) by combining cohort-specific estimates from logistic regression models into random-effects meta-analyses.

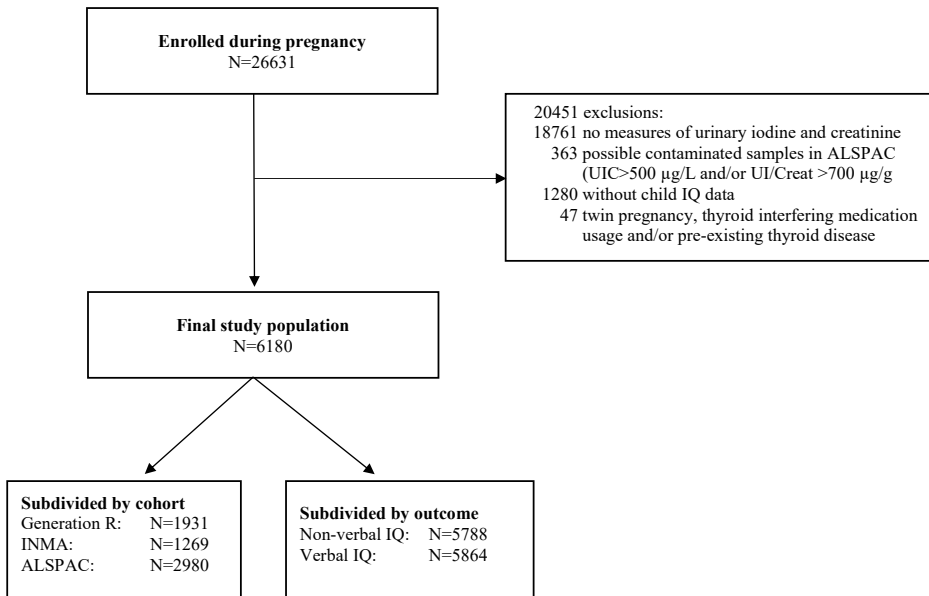
Sensitivity analyses were designed to study i) the associations of UI/Creat with verbal IQ score in mother-child pairs from INMA and ALSPAC only, as verbal IQ was assessed at a preschool age in Generation R; ii) the association between UI/Creat and maternal TSH and FT4 SD scores within the ± 4 SD range around the mean, as TSH and FT4 values outside this range were considered outliers (n=19 for TSH; n=5 for FT4); and iii) whether the association between UI/Creat and IQ score could potentially be explained by maternal thyroid function by adjusting for FT4 and TSH in the models.

Heterogeneity between cohorts was assessed using the Cochran Q test and the *I*<sup>2</sup> statistic<sup>42</sup>. All models were adjusted for potential confounding variables. However, because of collinearity between maternal ethnicity/country of birth, child age at IQ ascertainment, and cohort, we only adjusted for maternal ethnicity/country of birth in the one-step approach models.

We applied inverse probability weighting to take into account the potential differential loss to follow-up (Supplemental Table 1)<sup>30</sup> (*i.e.*, to account for selection bias that potentially arises when only the population with available data on iodine status and child IQ is included compared with a full initial cohort recruited at pregnancy<sup>43</sup>). Briefly, we used information available for all participants at recruitment to predict the probability of participation in the study and used the inverse of these probabilities as weights in the analyses so that results would be representative of the initial populations of the cohorts. In addition, missing values in potential confounding variables were imputed using chained equations<sup>44</sup>. A total of 25 datasets were generated. A *P* value <0.05 was defined as statistically significant. Statistical analyses were performed in STATA (version 14.0; StataCorp, College Station, TX) and R statistical software (version 3.3.2, package rms).

## Results

The final study population consisted of 6180 mother child-pairs (Fig. 1). The median UIC (UI/Creat) was 159  $\mu\text{g/L}$  (214  $\mu\text{g/g}$ ) in Generation R (adequate intake), 128  $\mu\text{g/L}$  (152  $\mu\text{g/g}$ ) in INMA (mild deficiency), and 96  $\mu\text{g/L}$  (124  $\mu\text{g/g}$ ) in ALSPAC (moderate deficiency; Table 1). Iodine status was determined at a median [interquartile range (IQR)] gestational age of 13.1 (12.1,14.8) weeks, 13.0 (12.4,14.1) weeks, and 12.0 (8.0-16.0) weeks in Generation R, INMA, and ALSPAC, respectively.



**Figure 1** Flowchart of selection of the study population.

### Non-verbal IQ

Using pooled data in the one-step approach, we observed a positive linear association between the UI/Creat and mean non-verbal IQ [Fig. 2(a) and Supplemental Table 2<sup>30</sup>], although this association was not statistically significant. Using the two-step approach in which we combined cohort-specific effect estimates using random-effects meta-analysis, neither UI/Creat <150  $\mu\text{g/g}$  nor UI/Creat  $\geq 500$   $\mu\text{g/g}$  was associated with non-verbal IQ (-0.6 point; 95% CI: -1.7 to 0.4 points;  $P=0.246$  and -1.1 points, 95% CI: -4.2 to 2.0 points;  $P=0.478$ ) [(Fig. 2(b) and 2(c)]. UI/Creat was not associated with suboptimal non-verbal IQ (Supplemental Figure 1<sup>30</sup>).

## Verbal IQ

Using the one-step approach, we observed a positive curvilinear association between UI/Creat and verbal IQ [Fig. 3(a) and Supplemental Table 2<sup>30</sup>]. There was a positive linear association when measures in preschool children from Generation R were excluded. Using the two-step approach, neither UI/Creat <150 µg/g nor UI/Creat ≥500 µg/g was associated with verbal IQ (-0.6 point, 95% CI: -1.3 to 0.1 points;  $P=0.082$  and -0.6 point, 95% CI: -2.6 to 1.4 points;  $P=0.552$ , respectively) [Fig. 3(b) and 3(c) or suboptimal verbal IQ; Supplemental Figure 1<sup>30</sup>].

## Effect modification according to gestational age

The continuous association of UI/Creat with non-verbal IQ did not differ according to gestational age at measurement ( $P$  for interaction term=0.306). By contrast, we identified possible effect modification by gestational age in the association with verbal IQ ( $P$  for interaction term=0.078). Stratification by tertile of gestational age showed a positive curvilinear association of UI/Creat with mean child verbal IQ, with an overall effect of ~5 IQ points during the first 12 weeks of pregnancy [Fig. 4(a) and Supplemental Table 3<sup>30</sup>]. Furthermore, there was a positive linear association between UI/Creat and mean child verbal IQ during the 12th to 14th weeks of pregnancy, with an overall effect of ~3 IQ points [Fig. 4(b)]. This association was no longer present after the 14th week of pregnancy [Fig. 4(c)].

**Table 1** Population characteristics.

Variable	Generation R (n=1931)		INMA (n=1269)		ALSPAC (n=2980)	
	n	values	n	values	n	values
Offspring neurodevelopment, no. (%)						
Suboptimal non-verbal IQ <sup>a</sup>	1540	175 (11.4)	1269	216 (17.0)	2979	479 (16.1)
Suboptimal verbal IQ <sup>a</sup>	1618	279 (17.2)	1269	211 (16.6)	2977	480 (16.1)
Female sex, no. (%)	1931	963 (49.9)	1268	632 (49.8)	2980	1514 (50.8)
Iodine status	1931		1269		2980	
UI/Creat, µg/g, median (IQR)		214 (143-308)		152 (96-258)		124 (82-199)
UI/Creat < 150 µg/g, no. (%)		531 (27.5)		623 (49.1)		1831 (61.4)
UI/Creat > 500 µg/g, no. (%)		97 (5.0)		52 (4.1)		81 (2.7)
UIC, µg/L, median (IQR)		159 (90-275)		128 (75-213)		96 (57-153)
Gestational age at urine sampling, wk	1931		1267		2980	
Median (IQR)		13.1 (12.1-14.8)		13.0 (12.4-14.1)		12.0 (8.0-16.0)
Range (min-max)		6.1-30.5		8.6-39.4		1.0-42.0
>20th week of gestation, no. (%)		66 (3.4)		130 (10.2)		211 (7.1)
Maternal thyroid function						
TSH, mIU/L, median (IQR)	1719	1.29 (0.79-1.95)	1227	1.25 (0.85-1.80)	1102	0.97 (0.64-1.38)
FT4, pmol/L, median (IQR)	1728	14.6 (12.9-16.5)	1229	10.6 (9.7-11.6)	1108	16.2 (14.9-17.7)
TPOAb positivity, no. (%)	1737	98 (5.6)	NA	NA	1111	146 (13.1)
Gestational age, wk, mean (SD)	1733	13.3 (1.9)	1228	13.2 (1.4)	1118	10.3 (2.7)



**Table 1** Population characteristics. (continued)

Variable	Generation R (n=1931)		INMA (n=1269)		ALSPAC (n=2980)	
	n	values	n	values	n	values
Educational level, no. (%)	1835		1265		2888	
Low		154 (8.4)		270 (21.3)		573 (19.8)
Middle		760 (41.4)		525 (41.5)		1810 (62.7)
High		921 (50.2)		470 (37.2)		505 (17.5)
Maternal ethnicity/country of birth, no. (%)	1803		1266		2877	
Spanish		NA		1184 (93.5)		NA
Latin-American		NA		56 (4.4)		NA
European/other		NA		26 (2.1)		NA
Dutch		1012 (53.2)		NA		NA
Indonesian		69 (3.6)		NA		NA
Cape Verdean		58 (3.1)		NA		NA
Moroccan		115 (6.0)		NA		NA
Surinamese		154 (8.1)		NA		NA
Turkish		170 (9.0)		NA		NA
Other, non-Western		150 (7.9)		NA		NA
Other, Western		174 (9.1)		NA		NA
Maternal ethnicity/country of birth, no. (%)						
White		NA		NA		2841 (98.7)
Non-White		NA		NA		36 (1.3)
Maternal age, y, mean (SD)	1931	30.5 (4.8)	1257	31.6 (3.9)	2980	28.6 (4.5)
Parity, no. (%)	1931		1267		2877	
0		1121 (58.1)		727 (57.4)		1346 (46.8)
1		564 (29.2)		458 (36.1)		992 (34.5)
≥2		246 (12.7)		82 (6.5)		539 (18.7)
Smoking during pregnancy, no. (%)	1744		1254		2926	
Never		1319 (75.6)		870 (69.4)		2434 (83.2)
In the beginning of pregnancy		168 (9.6)		168 (13.4)		125 (4.3)
Continued		257 (14.7)		216 (17.2)		367 (12.5)
Pre-pregnancy BMI, kg/m <sup>2</sup> , median (IQR)	1694	22.6 (20.8-25.2)	1269	22.5 (20.8-25.0)	2713	22.2 (20.5-24.4)

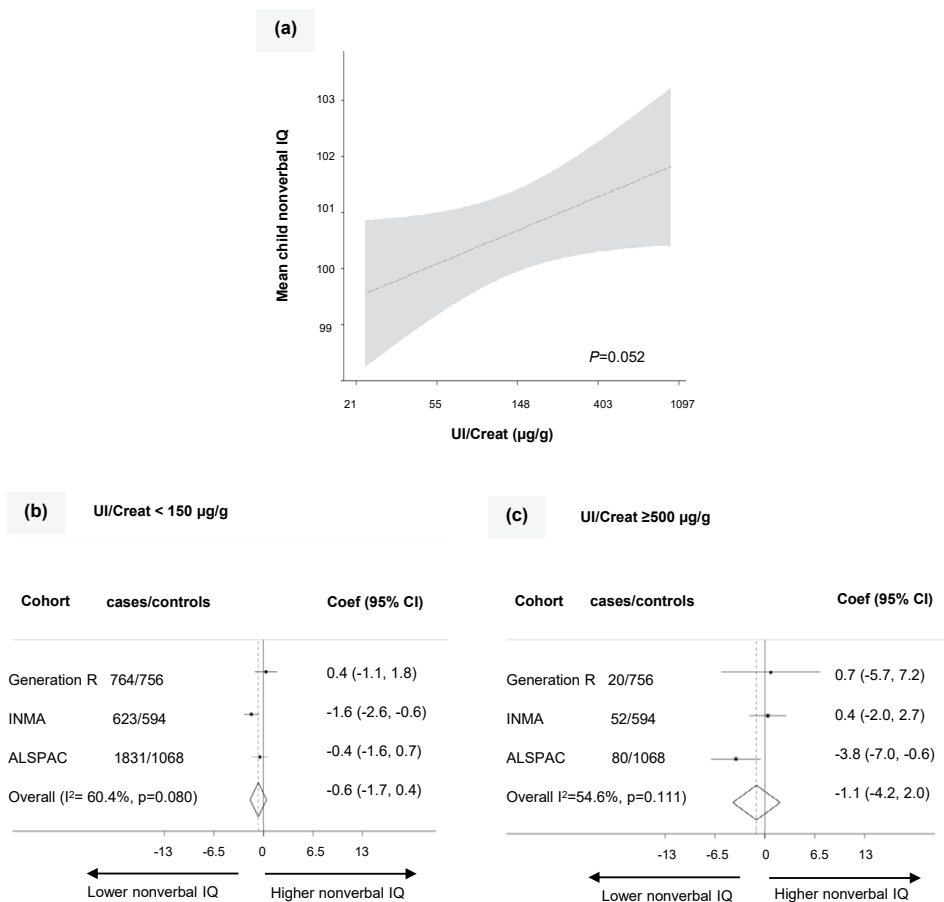
Values are based on unimputed data.

Abbreviations: BMI, body mass index; IQR, interquartile range; NA, not applicable.

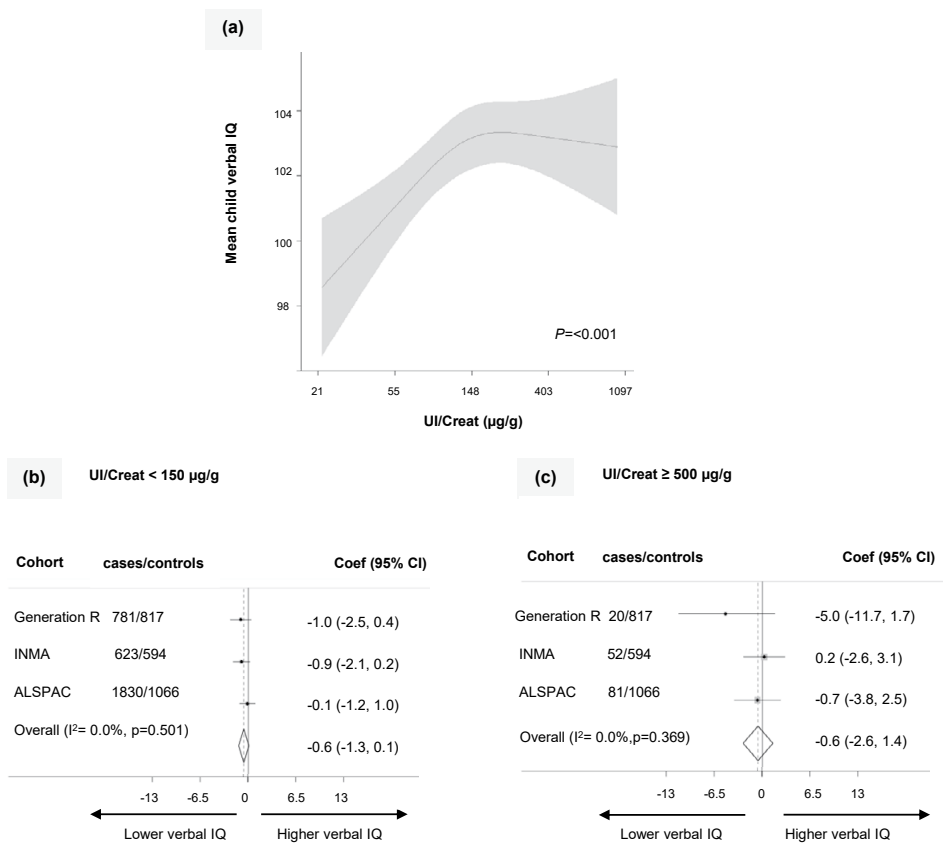
<sup>a</sup> Suboptimal defined as an IQ score <85.

## Iodine status and thyroid function

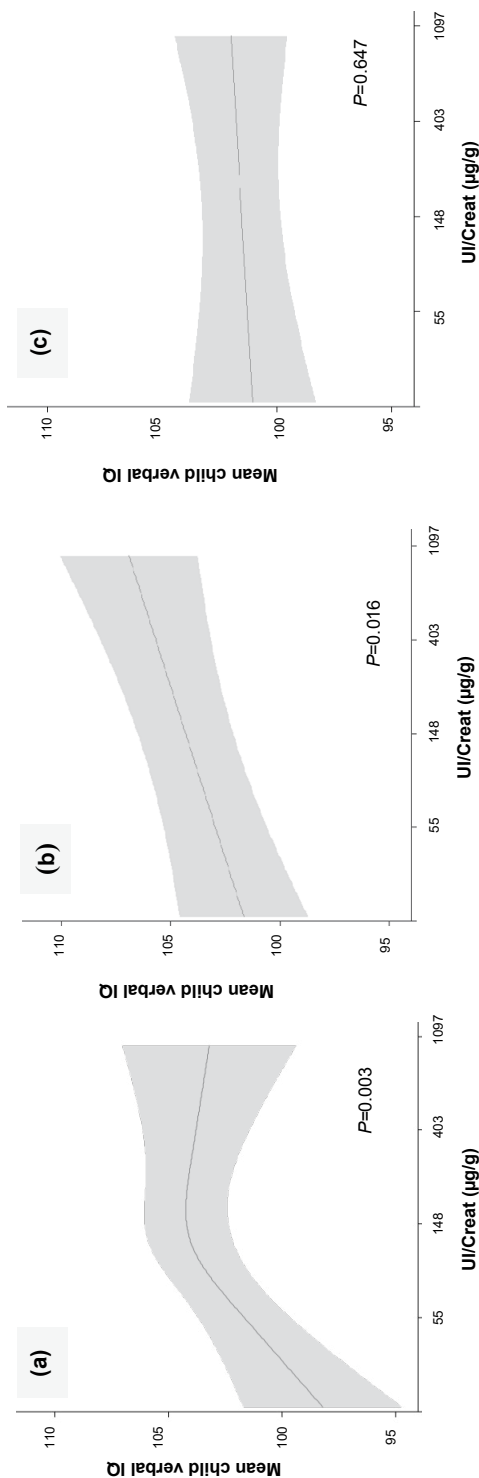
UI/Creat was not associated with TSH (0.007, 95 CI%: -0.044 to 0.058;  $P=0.789$ ) or with FT4 (-0.044, 95 CI%: -0.092 to 0.005;  $P=0.079$ ). The association did not change between UI/Creat and child non-verbal or verbal IQ score after adjusting for TSH and/or FT4; there was also no sign of effect modification by TSH or FT4 (data not shown). There was no association of UI/Creat with TSH and FT4 in TPOAb-negative women only.



**Figure 2** Association of maternal iodine status in pregnancy with child non-verbal IQ. (a) Continuous association, depicted as the mean child non-verbal IQ (black line) with 95% confidence interval (gray area) using pooled data. Models were adjusted for gestational age, child sex, maternal ethnicity/country of birth, maternal education, parity, maternal age, pre-pregnancy body mass index, and smoking during pregnancy. The  $P$  value was provided by an ANOVA test of the null hypothesis that child mean non-verbal IQ was similar across the whole range of the natural logarithm of UI/Creat. Forest plots of (b) UI/Creat <150  $\mu\text{g/g}$  (“deficiency”) and (c) UI/Creat  $\geq 500 \mu\text{g/g}$  (“excess”) compared with the reference group of UI/Creat  $\geq 150$  to <500  $\mu\text{g/g}$  (“sufficient”), depicted as effect estimate (dot) with 95% CI per cohort, and overall as estimated by random-effects meta-analysis (diamond). Abbreviation: Coef, coefficient.



**Figure 3** Association of maternal iodine status during pregnancy with child verbal IQ. (a) Continuous association, depicted as the mean child verbal IQ (black line) with 95% CI (gray area) using pooled data. Models were adjusted for gestational age, child sex, maternal ethnicity/country of birth, maternal education, parity, maternal age, pre-pregnancy body mass index, and smoking during pregnancy. The  $P$  value was provided by an ANOVA test of the null-hypothesis that child mean verbal IQ was similar across the whole range of the natural logarithm of UI/Creat. Forest plots of (b) UI/Creat <150  $\mu\text{g/g}$  (“deficiency”) and (c) UI/Creat  $\geq 500 \mu\text{g/g}$  (“excess”) compared with the reference group of UI/Creat  $\geq 150$  to <500  $\mu\text{g/g}$  (“sufficient”), depicted as effect estimate (dot) with 95% CI per cohort and overall as estimated by random-effects meta-analysis (diamond). Abbreviation: Coef, coefficient.



**Figure 4** Association of maternal iodine status during pregnancy with child verbal IQ stratified by tertiles of gestational age.

Continuous association, depicted as the mean child verbal IQ (black line) with 95% CI (gray area) was restricted to (a) the first 12 weeks of gestation (lowest tertile, median UI/Creat 116 µg/g, n=2209); (b) from weeks 12 to 14 of gestation (middle tertile, median UI/Creat 147 µg/g; n=1776); and (c) later than week 14 of gestation (highest tertile, median UI/Creat 157 µg/g; n=1879). Models were adjusted for gestational age, child sex, maternal ethnicity/country of birth, maternal education, parity, maternal age, pre-pregnancy body mass index, and smoking during pregnancy. The *P* value was provided by an ANOVA test of the null hypothesis that child mean verbal IQ was similar across the whole range of the natural logarithm of UI/Creat.

## Discussion

This meta-analysis of individual participant data showed that a lower UI/Creat during pregnancy was associated with lower verbal IQ score. The association of UI/Creat with verbal IQ was only seen up to the start of the second trimester (up to the 14th week of gestation). In contrast, we observed no associations between IQ and UI/Creat  $<150 \mu\text{g/g}$  or  $\geq 500 \mu\text{g/g}$ .

Only a few of the previous single-center studies (i.e., the Generation R and ALSPAC cohort studies) focused on child non-verbal IQ score <sup>7,14</sup>. They found no association between UI/Creat  $<150 \mu\text{g/g}$  and non-verbal IQ score. It was suggested that iodine deficiency in the Generation R cohort may not have been severe enough for an association to be identified <sup>14</sup>. After combining these two cohorts of contrasting iodine status with a third mildly deficient population (INMA), there was still no effect of iodine deficiency on non-verbal IQ score.

Our meta-analysis using predefined cutoffs showed that UI/Creat  $<150 \mu\text{g/g}$  was not associated with lower verbal IQ score. The estimates we found for ALSPAC contrasted with the strong negative association of maternal UI/Creat  $<150 \mu\text{g/g}$  in the first trimester (defined as  $\leq 13$  weeks gestation) with child verbal IQ score found in a previously published study from that cohort (fully adjusted:  $-2.9$ , 95% CI:  $-5.0$  to  $-0.8$ ,  $P=0.006$ ) <sup>7</sup>. However, there are a few important differences between the studies. Compared with the previous publication, the ALSPAC data in our study included a larger number of mother-child pairs (2980 vs 958), fewer iodine-deficient women [1831 (61.4%) vs 646 (67.4%)], a study population with a higher UI/Creat [median UI/Creat (IQR): 124 (82 to 199) vs 110 (74 to 170)], and most notably, a higher number of mothers with iodine status measured after the first trimester [1135 (38%) vs 0 (0%); median gestational age (IQR): 12 (8 to 16) weeks vs 10.0 (9 to 12) weeks]. In addition, we adjusted our analysis for a more stringent selection of variables. Comparison between study populations and additional analysis of the association between UI/Creat  $<150 \mu\text{g/g}$  and a verbal IQ score in the bottom quartile in the whole cohort and in samples  $\leq 13$  weeks' gestation are described in Supplemental Table 4 and 5 <sup>30</sup>.

The importance of iodine status in the preconceptional stage for child IQ has recently been shown <sup>45</sup>. In early pregnancy, the fetus is fully dependent on the placental transfer of thyroid hormone to support the crucial processes of brain development <sup>2</sup>. There is a need for optimal iodine supply from the initiation of conception, implying that sufficient intrathyroidal iodine stores at the preconception stage may well be critical. Indeed, our results suggest that the fetus is particularly sensitive to suboptimal iodine status in the early stages of pregnancy (e.g.,  $\leq 14$  weeks of gestation) for optimal development of verbal IQ. Effects on verbal IQ could possibly be explained by the impact of mild iodine deficiency, via thyroid hormone, on the auditory system <sup>13,46</sup>. In our study, we did not find evidence that the association between UI/Creat and verbal IQ was mediated via maternal thyroid function. Possible explanations could be that urinary iodine excretion is a highly volatile and crude measurement of individual iodine

status and/or a crude marker of thyroïdal iodine availability. Alternatively, it is also possible that the effects are (in part) mediated via fetal thyroid function.

This study confirms that low iodine status is associated with a reduction in verbal IQ scores, putting these children at potential risk for poorer academic achievement<sup>47</sup>. Furthermore, our findings may have implications on a national level (*e.g.*, by negatively affecting economic growth)<sup>48</sup>. However, there is still inconclusive evidence that supplementation in pregnant women with mild to moderate iodine deficiency is beneficial for child neurodevelopment<sup>11,15,16,49–53</sup>. A recent randomized, placebo-controlled trial showed no benefit on children's non-verbal or verbal IQ score with daily supplementation with 200 µg iodine (as potassium iodide) in women with mild iodine deficiency<sup>52</sup>. In addition to the already mentioned limitations of that trial<sup>54</sup>, our results provide an additional explanation for the null finding; the trial randomly assigned women at up to 14 weeks of gestation, whereas we showed that maternal iodine status is particularly important in the first trimester. Although our study needs replication, it suggests that the trial might have missed a critical period of vulnerability in women with iodine deficiency. Our results clearly suggest that additional randomized controlled trials should start with iodine supplementation early in the first trimester or preferably even before pregnancy.

The strengths of our study are as follows: A consistent approach to the analysis and harmonization of potential confounding variables across cohorts optimized comparisons; advanced statistical methods were used to overcome selection bias due to loss to follow up and missing data; and UI/Creat was used as a marker of iodine status. The latter has been shown to be a more valid measure of iodine excretion when used in the same groups of age and sex<sup>55</sup>, though we recognize that a single measure may not be reflective of overall iodine status in an individual. A limitation of the study is that the assessment of IQ was performed with different tools at different ages. Nevertheless, the tools measured the same construct (non-verbal or verbal IQ), and the standardization of IQ scores in each cohort facilitated comparison of results across cohorts. Sensitivity analysis in older children only (*e.g.*, excluding children from Generation R, thus reducing the age range at which verbal IQ was assessed) confirmed the association between UI/Creat and verbal IQ score. Another limitation is that UIC was measured in different laboratories using different assays; it is known that urinary iodine measurements vary between laboratories<sup>56</sup>. We used laboratories that were registered with EQUIP, and the use of certified reference materials enabled us to ensure the accuracy of results.

In conclusion, this study confirms that iodine status in pregnancy is associated with child IQ scores, and results indicate that the development of verbal IQ of the fetus is particularly vulnerable to suboptimal iodine concentration during early pregnancy up until the start of second trimester. As such, our results suggest that iodine supplementation after the first 14 weeks of pregnancy could be outside of the critical period during which iodine availability affects fetal brain development. However, further studies should replicate these data and investigate the effects of iodine supplementation.

## Acknowledgements

EUthyroid Project: European Union's Horizon 2020 research and innovation programme under grant agreement No 634453.

The Generation R study, the Netherlands is conducted by the Erasmus Medical Center in close collaboration with the Faculty of Social Sciences of the Erasmus University Rotterdam, the Municipal Health Service Rotterdam area, Rotterdam, and the Stichting Trombosedienst & Artsenlaboratorium Rijnmond (STAR-MDC), Rotterdam. The Generation R Study is supported by the Erasmus Medical Center, Rotterdam, the Erasmus University Rotterdam, the Netherlands Organization for Health Research and Development (ZonMw), the Netherlands Organization for Scientific Research (NWO), the Ministry of Health, Welfare and Sport. A grant from the Sophia Children's Hospital Research Funds supports the neurodevelopmental work on thyroid; Robin P. Peeters is supported by a ZonMw VIDI Grant, project number 1717331.

The INMA study, Spain was funded by grants from UE (FP7-ENV-2011 cod 282957 and HEALTH.2010.2.4.5-1) and Spain: Instituto de Salud Carlos III (Red INMA G03/176; CB06/02/0041; FIS-FEDER: PI041436, PI05/1079, PI06/0867, PI081151, FIS-and PS09/00090, PI11/01007, PI11/02591, PI11/02038, PI13/1944, PI13/2032, PI14/00891, PI14/01687, and PI16/1288; Miguel Servet-FEDER CP11/00178, CP15/00025, and CPII16/00051, MS13/00054), Generalitat Valenciana: FISABIO (UGP 15-230, UGP-15-244, and UGP-15-249), Generalitat de Catalunya-CIRIT 1999SGR 00241, Fundació La marató de TV3 (090430), Department of Health of the Basque Government (2005111093 and 2009111069), and the Provincial Government of Gipuzkoa (DFG06/004 and DFG08/001).

The ALSPAC study, United Kingdom is supported by the UK Medical Research Council and Wellcome (Grant ref: 102215/2/13/2) and the University of Bristol who provide core support for ALSPAC. We are extremely grateful to all the families who took part in this study, the midwives for their help in recruiting them, and the whole ALSPAC team, which includes interviewers, computer and laboratory technicians, clerical workers, research scientists, volunteers, managers, receptionists, and nurses. A comprehensive list of grants funding is available on the ALSPAC website (<http://www.bristol.ac.uk/alspac/external/documents/grant-acknowledgements.pdf>). The existing iodine measurements in ALSPAC were funded from (i) the NUTRIMENTHE project, which received a research grant from the European Community's 7th Framework Programme (FP7/2008–2013) under grant agreement 212652; and (ii) a Ph.D. studentship that was funded by Wassen International and the Waterloo Foundation (2009–2012).

**Supplemental Table 1** Distribution and comparison of maternal and child characteristics in the included and excluded population.

	Generation R			INMA			ALSPAC		
	included (n=1931)	not included (n=7818)	P value	Included (n=1269)	not included (n=881)	P value	Included (n=2980)	not included (n=11752)	P value
Female sex, n (%)	963 (49.9)	3846 (49.2)	0.605	632 (49.8)	348 (46.5)	0.150	1514 (50.8)	5312 (47.6)	0.002
Educational level, n (%)									
Low	154 (8.4)	791 (12.0)		270 (21.3)	293 (34.4)		573 (19.8)	3183 (33.1)	
Middle	760 (41.4)	3117 (47.2)	<0.001	525 (41.5)	337 (39.6)	<0.001	1810 (62.7)	5318 (55.4)	<0.001
High	921 (50.2)	2692 (40.8)		470 (37.2)	221 (26.0)		505 (17.5)	1104 (11.5)	
Maternal ethnicity/country of birth, n (%)									
Spanish	NA	NA		1184 (93.5)	731 (85.8)		NA	NA	
Latin-American	NA	NA		56 (4.4)	80 (9.4)		NA	NA	
European/other	NA	NA		26 (2.1)	41 (4.8)		NA	NA	
Dutch	1012 (53.2)	3490 (49.5)		NA	NA		NA	NA	
Indonesian	69 (3.6)	198 (2.8)		NA	NA		NA	NA	
Cape Verdean	58 (3.1)	314 (4.5)		NA	NA		NA	NA	
Moroccan	115 (6.0)	487 (6.9)	0.001	NA	NA	<0.001	NA	NA	<0.001
Surinamese	154 (8.1)	636 (9.0)		NA	NA		NA	NA	
Turkish	170 (9.0)	617 (8.7)		NA	NA		NA	NA	
Other, non-Western	150 (7.9)	724 (10.3)		NA	NA		NA	NA	
Other, Western	174 (9.1)	589 (8.3)		NA	NA		NA	NA	
White	NA	NA		NA	NA		2841 (98.7)	9234 (97.0)	
Non-white	NA	NA		NA	NA		36 (1.3)	290 (3.0)	
Maternal age, years, mean (SD)	30.5 (4.8)	29.8 (5.5)	<0.001	31.6 (3.9)	30.7 (4.8)	<0.001	28.6 (4.5)	26.9 (5.1)	<0.001





## Supplemental material

### Methods of urinary iodine measurements

In Generation R, urinary iodine was measured by the Sandell-Kolthoff method. Iodine calibration was performed using certified reference materials (CRM) Seronorm urine Levels one and two (Nycomed, Norway), and four EQUIP samples certified for urinary iodine concentration (Centers for Disease Control and Prevention, USA). At a level of 1.7  $\mu\text{mol/l}$  iodine the within-assay CV was 5.1% and the between-assay CV was 14.3% ( $n=30$ ). In INMA, urinary iodine was measured using paired-ion reversed-phase, high-performance liquid chromatography (HPLC) with electrochemical detection at a silver working electrode (Waters Chromatography, Milford, MA). The accuracy of the results was verified using the CRM Seronorm urine Levels one and two (Nycomed, Norway), and internal quality control samples. Within run precision was 4.5% relative standard deviation (RSD) at 50  $\mu\text{g/L}$ , 3.2% at 100  $\mu\text{g/L}$  and 2.0% at 300  $\mu\text{g/L}$ . Between run precision was 7.9% RSD at 50  $\mu\text{g/L}$ , 3.5% at 100  $\mu\text{g/L}$  and 2.5 % at 300  $\mu\text{g/L}$ . In ALSPAC, iodine ( $^{127}\text{I}$ ) was measured on a dynamic reaction cell inductively-coupled plasma (ICP) mass spectrometer. The accuracy of the results was verified using the CRM Seronorm urine Levels one and two (Nycomed, Norway), and accuracy was also monitored by measurement of EQUIP samples at regular intervals throughout the analysis. Within run precision was 0.83% RSD at 42  $\mu\text{g/L}$ , 2.47% at 84  $\mu\text{g/L}$ , 0.56% at 149  $\mu\text{g/L}$  and 2.01% at 297  $\mu\text{g/L}$ . Between run precision was 8.69% RSD at 42  $\mu\text{g/L}$ , 6.54% at 84  $\mu\text{g/L}$ , 7.2% at 149  $\mu\text{g/L}$  and 6.8% at 297  $\mu\text{g/L}$ .

**Supplementary Table 2** Continuous analysis of the association of maternal iodine status during pregnancy with child non-verbal and verbal IQ using standard linear regression models.

Type of model	Variables in the model	Non-verbal IQ		verbal IQ	
		Beta (95% CI)	P-value	Beta (95% CI)	P-value
linear model	UI/Creat	0.602 (-0.007 to 1.210)	0.053	1.061 (0.450 to 1.672)	0.001
non-linear model	UI/Creat	0.632 (-5.848 to 7.113)	0.848	10.011 (3.499 to 16.523)	0.003
	UI/Creat <sup>2</sup>	-0.003 (-0.651 to 0.644)	0.993	-0.898 (-1.549 to -0.247)	0.007

Reported beta and 95% CI are increase in mean child IQ per natural log increase in UI/Creat. UI/Creat<sup>2</sup> refers to the addition of a squared logtransformed UI/Creat variable in the model. Analyses were performed using linear regression models. Analyses were adjusted for gestational age at urine sampling, child sex, maternal ethnicity/country of birth, maternal education, parity, maternal age, pre-pregnancy BMI, and smoking during pregnancy.

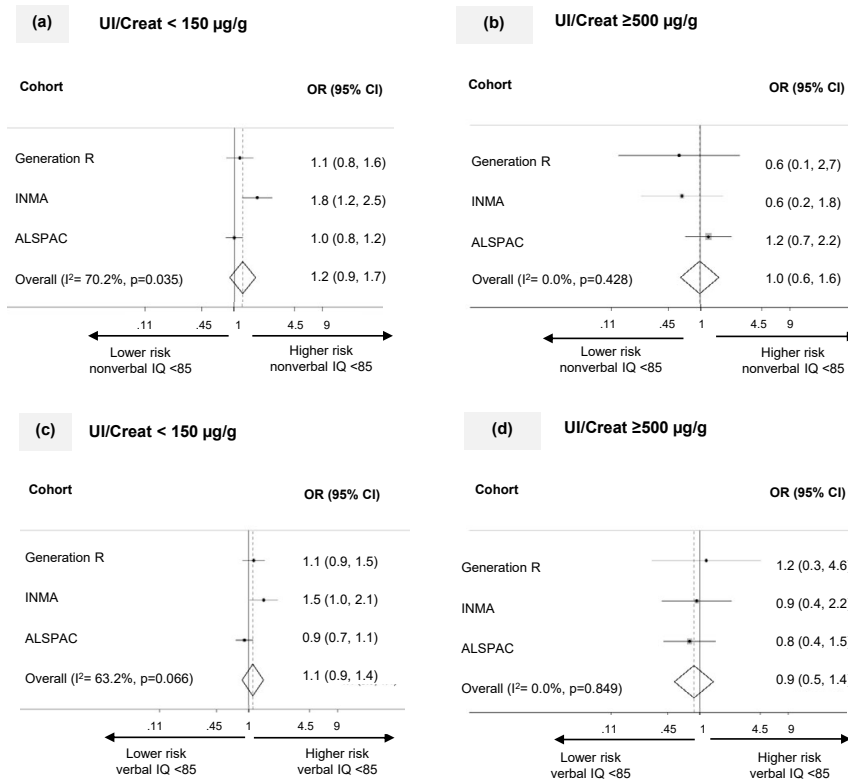
**Supplemental Figure 1** Association of UI/Creat < 150 µg/g and UI/Creat  $\geq 500$  µg/g during pregnancy with child suboptimal non-verbal and verbal IQ.

Figure shows the association of UI/Creat < 150 µg/g (“deficiency”) with a) non-verbal IQ score < 85 and c) verbal IQ score < 85, and UI/Creat  $\geq 500$  µg/g (“excess”) with b) non-verbal IQ score < 85 and d) verbal IQ score < 85 as compared to the reference group (UI/Creat  $\geq 150$  to < 500 µg/g). Associations are depicted as effect estimate (dot) with 95% CI per cohort and overall as estimated by random-effects meta-analysis (diamond). Models are adjusted for gestational age, child sex, maternal ethnicity/country of birth, maternal education, parity, maternal age, pre-pregnancy BMI, smoking during pregnancy, child age and region in INMA.

**Supplemental Table 3** Continuous analysis of the association of maternal iodine status during pregnancy with child verbal IQ stratified by tertile of gestational age using standard linear regression models.

Type of model	Variables in the model	Gestational age (weeks)	Beta (95% CI)	P-value
non-linear model	UI/Creat	≤12	18.276 (6.923 to 29.628)	0.002
	UI/Creat^2		-1.786 (-2.953 to -0.620)	0.003
Linear model	UI/Creat	>12 and ≤14	1.333 (0.230 to 2.436)	0.018
Linear model	UI/Creat	>14	0.444 (-0.601 to 1.489)	0.405

Reported beta and 95% CI are increase in mean child verbal IQ per log increase in UI/Creat. UI/Creat^2 refers to the addition of a squared UI/Creat variable in the model. Analyses were performed using linear regression models. UI/Creat was transformed by the natural logarithm. Analyses were adjusted for gestational age at urine sampling, child sex, maternal ethnicity/country of birth, maternal education, parity, maternal age, pre-pregnancy BMI, and smoking during pregnancy.

**Supplemental Table 4** Comparison of the ALSPAC study population included in the current study and in the previous publication of Bath et al. 2013.

	this study cohort	this study cohort restricted to ≤13 weeks gestation	Bath et al. 2013
No.	2980	1845	958
gestational age, median (IQR)	12 (8-16)	9 (7-11)	10 (9-12)
UI/Creat, µg/g, median (IQR)	124 (82-199)	108 (75-161)	110 (74-170)
UI/Creat < 150 µg/g, %	61.4	70.1	67.4
UIC, µg/L, median (IQR)	96 (57-153)	96.8 (60-149)	91.1 (53.8-143)

**Supplemental Table 5** Association of maternal iodine status with a child verbal IQ score in the lowest quartile as studied in the current ALSPAC study population and as in the previous publication of Bath et al. 2013.

this study cohort	this study cohort restricted to ≤13 weeks gestation	Bath et al. 2013
OR (95% CI), P-value	OR (95% CI), P-value	OR (95% CI), P-value
1.13 (0.92 to 1.39), 0.259	1.42 (1.06 to 1.91), 0.019	1.58 (1.09 to 2.30), 0.02

Reported OR and 95% CI for a verbal IQ score in the bottom quartile when exposed to a maternal UI/Creat < 150 µg/g vs ≥ 150 µg/g (reference group) during pregnancy. Analyses with un-imputed data were performed using logistic regression models and were adjusted as similarly as possible as compared to the fully adjusted model (model 3) as reported in the publication of Bath et al. Analyses were adjusted for preterm birth, birth-weight, child sex, maternal education, paternal education, maternal ethnicity (instead of child ethnicity), parity, age at delivery, smoking, maternal alcohol intake, breastfeeding, iron intake, and omega-3 fatty acid intake estimated from the Food Frequency Questionnaire completed at 32 weeks' of gestation. Missing information that was corrected for in model 3 of Bath et al but lacking in the analysis of this study cohort, were: mothers parenting score (seven-factor measure of cognitive stimulation at 6 months of age), home observation for measurement of environment (HOME) score (six-factor measure of the emotional and cognitive environment at 6 months of age), the family adversity index (18-factor measure of hardship during pregnancy), life-event score (exposure to 41 stressful events during pregnancy), maternal depression since birth, fish-oil supplements during pregnancy, housing status, and crowding.

## References

1. Lavado-Autric R, Ausó E, García-Velasco JV, et al. Early maternal hypothyroxinemia alters histogenesis and cerebral cortex cytoarchitecture of the progeny. *J Clin Invest.* 2003;111(7):1073-1082. doi:10.1172/JCI16262
2. Bernal J. Thyroid Hormones and Brain Development. *Vitam Horm.* 2005;71:95-122.
3. Trumpff C, De Schepper J, Tafforeau J, Van Oyen H, Vanderfaeillie J, Vandevijvere S. Mild iodine deficiency in pregnancy in Europe and its consequences for cognitive and psychomotor development of children: a review. *J Trace Elem Med Biol.* 2013;27(3):174-183.
4. Zimmermann MB. Iodine deficiency. *Endocr Rev.* 2009;30(4):376-408.
5. Iodine Global Network. Global Scorecard of Iodine Nutrition 2017. [http://www.ign.org/cm\\_data/IGN\\_Global\\_Map\\_PW\\_30May2017\\_1.pdf](http://www.ign.org/cm_data/IGN_Global_Map_PW_30May2017_1.pdf). Accessed May 8, 2018.
6. Zimmermann MB, Jooste PL, Pandav CS. Iodine-deficiency disorders. *The Lancet.* 2008;372(9645):1251-1262.
7. Bath SC, Steer CD, Golding J, Emmett P, Rayman MP. Effect of inadequate iodine status in UK pregnant women on cognitive outcomes in their children: results from the Avon Longitudinal Study of Parents and Children (ALSPAC). *The Lancet.* 2013;382(9889):331-337.
8. Hynes KL, Otahal P, Hay I, Burgess JR. Mild Iodine Deficiency During Pregnancy Is Associated With Reduced Educational Outcomes in the Offspring: 9-Year Follow-up of the Gestational Iodine Cohort. *J Clin Endocrinol Metab.* 2013;98(5):1954-1962.
9. van Mil NH, Tiemeier H, Bongers-Schokking JJ, et al. Low urinary iodine excretion during early pregnancy is associated with alterations in executive functioning in children. *J Nutr.* 2012;142(12):2167-2174.
10. Abel MH, Caspersen IH, Meltzer HM, et al. Suboptimal Maternal Iodine Intake Is Associated with Impaired Child Neurodevelopment at 3 Years of Age in the Norwegian Mother and Child Cohort Study. *J Nutr.* 2017;147(7):1314-1324.
11. Murcia M, Espada M, Julvez J, et al. Iodine intake from supplements and diet during pregnancy and child cognitive and motor development: the INMA Mother and Child Cohort Study. *J Epidemiol Community Health.* 2018;72:216-222.
12. Abel MH, Ystrom E, Caspersen IH, et al. Maternal Iodine Intake and Offspring Attention-Deficit/Hyperactivity Disorder: Results from a Large Prospective Cohort Study. *Nutrients.* 2017;9(11):1239.
13. Hynes KL, Otahal P, Burgess JR, Oddy WH, Hay I. Reduced Educational Outcomes Persist into Adolescence Following Mild Iodine Deficiency in Utero, Despite Adequacy in Childhood: 15-Year Follow-Up of the Gestational Iodine Cohort Investigating Auditory Processing Speed and Working Memory. *Nutrients.* 2017;9(12):1354.
14. Ghassabian A, Steenweg-de Graaff J, Peeters RP, et al. Maternal urinary iodine concentration in pregnancy and children's cognition: results from a population-based birth cohort in an iodine-sufficient area. *BMJ Open.* 2014;4:e005520.
15. Murcia M, Rebagliato M, Iñiguez C, et al. Effect of iodine supplementation during pregnancy on infant neurodevelopment at 1 year of age. *Am J Epidemiol.* 2011;173(7):804-812.
16. Rebagliato M, Murcia M, Alvarez-Pedrerol M, et al. Iodine supplementation during pregnancy and infant neuropsychological development. INMA Mother and Child Cohort Study. *Am J Epidemiol.* 2013;177(9):944-953.
17. Shi X, Han C, Li C, et al. Optimal and safe upper limits of iodine intake for early pregnancy in iodine-sufficient regions: a cross-sectional study of 7190 pregnant women in China. *J Clin Endocrinol Metab.* 2015;100(4):1630-1638.

18. Sang Z, Wei W, Zhao N, et al. Thyroid dysfunction during late gestation is associated with excessive iodine intake in pregnant women. *J Clin Endocrinol Metab.* 2012;97(8):E1363-1369.
19. Medici M, Ghassabian A, Visser W, et al. Women with high early pregnancy urinary iodine levels have an increased risk of hyperthyroid newborns: the population-based Generation R Study. *Clin Endocrinol (Oxf).* 2014;80(4):598-606.
20. Connelly KJ, Boston BA, Pearce EN, et al. Congenital Hypothyroidism Caused by Excess Prenatal Maternal Iodine Ingestion. *J Pediatr.* 2012;161(4):760-762.
21. WHO Secretariat, Andersson M, de Benoist B, Delange F, Zupan J. Prevention and control of iodine deficiency in pregnant and lactating women and in children less than 2-years-old: conclusions and recommendations of the Technical Consultation. *Public Health Nutr.* 2007;10(12A):1606-1611.
22. Alexander EK, Pearce EN, Brent GA, et al. 2017 Guidelines of the American Thyroid Association for the Diagnosis and Management of Thyroid Disease during Pregnancy and the Postpartum. *Thyroid Off J Am Thyroid Assoc.* 2017;27(3):315-389.
23. Lazarus J, Brown RS, Daumerie C, Hubalewska-Dydejczyk A, Negro R, Vaidya B. 2014 European thyroid association guidelines for the management of subclinical hypothyroidism in pregnancy and in children. *Eur Thyroid J.* 2014;3(2):76-94.
24. Guxens M, Ballester F, Espada M, et al. Cohort Profile: the INMA--INfancia y Medio Ambiente--(Environment and Childhood) Project. *Int J Epidemiol.* 2012;41(4):930-940.
25. Kooijman MN, Kruithof CJ, van Duijn CM, et al. The Generation R Study: design and cohort update 2017. *Eur J Epidemiol.* 2016;31(12):1243-1264.
26. Boyd A, Golding J, Macleod J, et al. Cohort Profile: The 'Children of the 90s'—the index offspring of the Avon Longitudinal Study of Parents and Children. *Int J Epidemiol.* 2013;42(1):111-127.
27. Fraser A, Macdonald-Wallis C, Tilling K, et al. Cohort Profile: The Avon Longitudinal Study of Parents and Children: ALSPAC mothers cohort. *Int J Epidemiol.* 2013;42(1):97-110.
28. ALSPAC Executive. Access data and samples. <http://www.bris.ac.uk/alspac/researchers/data-access/data-dictionary/>. Accessed March 12, 2018.
29. Murcia M, Rebagliato M, Espada M, et al. Iodine intake in a population of pregnant women: INMA mother and child cohort study, Spain. *J Epidemiol Community Health.* 2010;64(12):1094-1099.
30. Levie D, Korevaar TIM, Bath SC, et al. Association of maternal iodine status with child IQ: a meta-analysis of individual-participant data. Supplemental material. <https://repub.eur.nl/pub/112369/>. Accessed November 27, 2018.
31. Pearce EN, Lazarus JH, Smyth PP, et al. Urine test strips as a source of iodine contamination. *Thyroid.* 2009;19(8):919-919.
32. Pearce EN, Lazarus JH, Smyth PPA, et al. Perchlorate and Thiocyanate Exposure and Thyroid Function in First-Trimester Pregnant Women. *J Clin Endocrinol Metab.* 2010;95(7):3207-3215.
33. Bath SC, Pop VJM, Furnidge-Owen VL, Broeren MAC, Rayman MP. Thyroglobulin as a Functional Biomarker of Iodine Status in a Cohort Study of Pregnant Women in the United Kingdom. *Thyroid.* 2017;27(3):426-433.
34. Korevaar TIM, Muetzel R, Medici M, et al. Association of maternal thyroid function during early pregnancy with offspring IQ and brain morphology in childhood: a population-based prospective cohort study. *Lancet Diabetes Endocrinol.* 2016;4(1):35-43.
35. Julvez J, Alvarez-Pedrerol M, Rebagliato M, et al. Thyroxine Levels During Pregnancy in Healthy Women and Early Child Neurodevelopment: *Epidemiology.* 2013;24(1):150-157.
36. Nelson SM, Haig C, McConnachie A, et al. Maternal thyroid function and child educational attainment: prospective cohort study. *BMJ.* 2018;360:k452.