


RESEARCH ARTICLE

Open Access



# Maternal dietary quality, inflammatory potential and childhood adiposity: an individual participant data pooled analysis of seven European cohorts in the ALPHABET consortium

Ling-Wei Chen<sup>1\*</sup> , Adrien M. Aubert<sup>2</sup>, Nitin Shivappa<sup>3,4</sup>, Jonathan Y. Bernard<sup>2,5</sup>, Sara M. Mensink-Bout<sup>6,7</sup>, Aisling A. Geraghty<sup>8</sup>, John Mehegan<sup>1</sup>, Matthew Suderman<sup>9</sup>, Kinga Polanska<sup>10</sup>, Wojciech Hanke<sup>10</sup>, Agnieszka Jankowska<sup>10</sup>, Caroline L. Relton<sup>9</sup>, Sarah R. Crozier<sup>11</sup>, Nicholas C. Harvey<sup>11,12</sup>, Cyrus Cooper<sup>11,12</sup>, Mark Hanson<sup>12,13</sup>, Keith M. Godfrey<sup>11,12</sup>, Romy Gaillard<sup>6,14</sup>, Liesbeth Duijts<sup>6,7,15</sup>, Barbara Heude<sup>2</sup>, James R. Hébert<sup>3,4</sup>, Fionnuala M. McAuliffe<sup>8</sup>, Cecily C. Kelleher<sup>1</sup> and Catherine M. Phillips<sup>1\*</sup>

## Abstract

**Background:** Mounting evidence suggests that maternal diet influences pregnancy and birth outcomes, but its contribution to the global epidemic of childhood obesity has not as yet been definitively characterized. We investigated whether maternal whole diet quality and inflammatory potential influence childhood adiposity.

**Methods:** We harmonized and pooled individual participant data from 16,295 mother-child pairs in seven European birth cohorts. Maternal pre-, early-, late-, and whole-pregnancy (any time during pregnancy) dietary quality and inflammatory potential assessed with the Dietary Approaches to Stop Hypertension (DASH) score and the energy-adjusted Dietary Inflammatory Index (E-DII™) score, respectively. Primary outcome was childhood overweight and obesity (OWOB) (age-and-sex-specific BMI z-score > 85th percentile). Secondary outcomes were sum of skinfold thickness (SST), fat mass index (FMI) and fat-free mass index (FFMI). We used multivariable regression analyses (adjusting for maternal lifestyle and sociodemographic factors) to assess the associations of maternal DASH and E-DII scores with offspring adiposity outcomes in cohort-specific analyses, with subsequent random-effect meta-analyses.

(Continued on next page)

\* Correspondence: [ling-wei.chen@ucd.ie](mailto:ling-wei.chen@ucd.ie); [catherine.phillips@ucd.ie](mailto:catherine.phillips@ucd.ie)

<sup>1</sup>HRB Centre for Health and Diet Research, School of Public Health, Physiotherapy, and Sports Science, University College Dublin, Dublin, Republic of Ireland

Full list of author information is available at the end of the article



© The Author(s). 2021 **Open Access** This article is licensed under a Creative Commons Attribution 4.0 International License, which permits use, sharing, adaptation, distribution and reproduction in any medium or format, as long as you give appropriate credit to the original author(s) and the source, provide a link to the Creative Commons licence, and indicate if changes were made. The images or other third party material in this article are included in the article's Creative Commons licence, unless indicated otherwise in a credit line to the material. If material is not included in the article's Creative Commons licence and your intended use is not permitted by statutory regulation or exceeds the permitted use, you will need to obtain permission directly from the copyright holder. To view a copy of this licence, visit <http://creativecommons.org/licenses/by/4.0/>. The Creative Commons Public Domain Dedication waiver (<http://creativecommons.org/publicdomain/zero/1.0/>) applies to the data made available in this article, unless otherwise stated in a credit line to the data.

(Continued from previous page)

**Results:** The study mothers had a mean (SD) age of 30.2 (4.6) years and a mean BMI of 23.4 (4.2) kg/m<sup>2</sup>. Higher early-pregnancy E-DII scores (more pro-inflammatory diet) tended to be associated with a higher odds of late-childhood [10.6 (1.2) years] OWOB [OR (95% CI) 1.09 (1.00, 1.19) per 1-SD E-DII score increase], whereas an inverse association was observed for late-pregnancy E-DII score and early-childhood [2.8 (0.3) years] OWOB [0.91 (0.83, 1.00)]. Higher maternal whole pregnancy DASH score (higher dietary quality) was associated with a lower odds of late-childhood OWOB [OR (95% CI) 0.92 (0.87, 0.98) per 1-SD DASH score increase]; associations were of similar magnitude for early and late-pregnancy [0.86 (0.72, 1.04) and 0.91 (0.85, 0.98), respectively]. These associations were robust in several sensitivity analyses and further adjustment for birth weight and childhood diet did not meaningfully alter the associations and conclusions. In two cohorts with available data, a higher whole pregnancy E-DII and lower DASH scores were associated with a lower late-childhood FFMI in males and a higher mid-childhood FMI in females (*P* interactions < 0.10).

**Conclusions:** A pro-inflammatory, low-quality maternal antenatal diet may adversely influence offspring body composition and OWOB risk, especially during late-childhood. Promoting an overall healthy and anti-inflammatory maternal dietary pattern may contribute to the prevention of childhood obesity, a complex health issue requiring multifaceted strategy.

**Keywords:** Childhood obesity, Maternal, Pregnancy, Diet, Quality, Inflammation, Dietary inflammatory index, Dietary approaches to stop hypertension, Developmental origin of health and diseases

## Background

Childhood obesity has reached epidemic proportions worldwide [1]. Obesity in childhood has a pronounced impact on subsequent health risks as it often tracks into adulthood and is associated with a higher risk of chronic diseases including type 2 diabetes [2]. Although immediate lifestyle intervention in the paediatric population is essential, mounting evidence has pointed to the first 1000 days of life (from conception to 2 years old) as a critical period for preventing childhood obesity [3, 4]. In the 2016 Commission on Ending Childhood Obesity report commissioned by the World Health Organization (WHO), appropriate prenatal care such as optimizing maternal nutrition was highlighted as a key strategy to prevent childhood obesity [5].

The Developmental Origins of Health and Diseases (DOHaD) concept posits that early life represents a window of opportunity to optimize health trajectory of the immediate offspring and subsequent generations. Indeed, exposure to severe (in response to famine) or mild (e.g. suboptimal macronutrient composition) in utero malnutrition has been associated with a higher risk of obesity/higher adiposity [6–10] and metabolic disorders such as type 2 diabetes [11] later in life. Furthermore, maternal over-nutrition has also been shown to have a long-term influence on the offspring, including a higher risk of childhood obesity and other metabolic disorders (recently reviewed in [12]).

Due to the complexity of human diet [13] and because individuals do not consume nutrients and foods in isolation, the effectiveness of public health messaging to influence eating behaviours could be improved by assessing diet in a more holistic way. One such approach is through the use of diet quality indices based on

previous scientific evidence that summarizes several aspects of dietary intake either against dietary guidelines or in terms of biological mechanism [14]. Because maternal inflammatory markers are associated with higher offspring adiposity [15, 16], reducing maternal inflammation through dietary optimization [17, 18] may be a potential strategy to reduce childhood obesity risk. A dietary inflammatory index (DII) has been designed specifically to measure diet-related inflammatory potential. DII likely captures a slightly different and narrower dimension of diet than a general dietary quality index, as suggested by only a moderate correlation between these indices [19]. Although maternal inflammation can be a mechanism through which maternal diet affects child health, other pathways such as epigenetic programming can also be responsible. Thus, by investigating maternal dietary inflammatory potential, we can infer the potential involvement of inflammation in our studied outcomes and make more specific dietary recommendations based on the DII if it does.

Most studies to date examining dietary quality or inflammatory potential and childhood adiposity have been conducted in a single country [20–23], potentially limiting generalizability because dietary habits could differ substantially across countries. These studies, in general, observed beneficial influence of higher maternal dietary quality and lower dietary inflammatory potential on offspring adiposity measures; however, one study reported null associations after adjusting for covariates [22]. We thus aimed to further elucidate the associations between maternal dietary quality, inflammatory potential and offspring adiposity outcomes through an individual participant data meta-analysis involving five countries.

A UK study that followed women from pre-conception through pregnancy showed that maternal dietary intakes and patterns changed little from before pregnancy to early and late pregnancy [24]. However, maternal diet at different stages of pregnancy could potentially differentially influence child outcomes, as such stages represent different phases of foetal growth and development. For example, foetal fat accretion starts only in late gestation [25]. We thus hypothesized that a pro-inflammatory and low-quality maternal diet is associated with a higher risk of childhood obesity, potentially with differential influences of maternal diet at different stages of preconception/pregnancy. Pre-conception diet has been increasingly associated with child outcomes, suggesting that there may be opportunities for interventions that change dietary patterns before conception to influence long-term child health [26]. Thus, in cohorts with available data, we also investigated potential influence of pre-pregnancy maternal dietary quality and inflammatory potential on childhood obesity.

## Methods

### Study population

This study involves seven mother-offspring cohort studies from five European countries within the ALPHABET consortium. These cohorts and longitudinal follow-up from a randomized controlled trial include the Lifeways Cross-Generation Cohort Study (Lifeways) (ISRC TN16537904) and the Randomised cOntrol trial of LOW glycaemic index diet during pregnancy study (ROLO) in Ireland (ISRCTN54392969); the study on the pre- and early postnatal determinants of child health and development (EDEN) in France; the Avon Longitudinal Study of Parents and Children (ALSPAC) and the Southampton Women's Survey (SWS) in the UK; the Polish Mother and Child Cohort (REPRO\_PL) (NCT01861548) in Poland; and The Generation R Study (Generation R) (NTR6671) in the Netherlands [27–35]. All studies have been approved by the respective local ethical review committees (see the 'Acknowledgements' section for details) and written consent was obtained from all mothers. The characteristics of each study and numbers of participants included in the current analysis are summarized in Additional file 1: Table S1 [27–35]. For more details of the respective cohorts, please refer to Additional file 1: Table S2 for a summary [36].

### Exposure

#### Maternal dietary assessment

Pre-pregnancy or antenatal dietary intakes of the study mothers were assessed using validated (except for ALSPAC which used a FFQ that had not been formally validated but covered the main foods consumed in Britain) food frequency questionnaires (FFQ) (mean food

items in ALPHABET: 137), which have been described in detail elsewhere [37–45]. In ALPHABET, pre-pregnancy maternal diet was available in two studies (SWS and EDEN), while pregnancy maternal diet was assessed in all studies. Pregnancy diet was further classified based on a period of assessment: early pregnancy (1st/early 2nd trimester,  $n = 5$  cohorts) and late pregnancy (3rd trimester,  $n = 3$  cohorts). Since maternal diet was assessed during both early and late pregnancy in SWS, both were included and the average was taken to reflect whole pregnancy exposure. Whole pregnancy refers to dietary information assessed at any time point of pregnancy.

#### Derivation of maternal dietary inflammatory potential score

Maternal dietary inflammatory potential was ranked using the energy-adjusted Dietary Inflammatory Index (E-DII™), a well-validated literature-derived score described in detail elsewhere [46]. Briefly, dietary information for each mother was converted to amount per 1000-kcal intake and then linked to a regionally representative database. The regionally representative world composite database was constructed using national nutrition survey information across diverse populations living in a variety of countries in different regions of the world (USA, Australia, Bahrain, Denmark, India, Japan, New Zealand, Taiwan, South Korea, UK). The composite database provides a basis for benchmarking individual dietary intake to a representative range of dietary intake based on actual human consumption (more details available at [46]). The database provides an overall estimate of mean and standard deviation of energy-standardized intakes (using density method) for each of the dietary parameters (i.e. nutrients, foods, and other food components). Subsequently,  $z$ -scores for each dietary parameter were derived by subtracting the mean of the energy-adjusted regionally representative world composite database from the participants-reported amount and dividing this value by the parameter's representative standard deviation. The  $z$ -scores were then converted to proportions (i.e. with values ranging from 0 to 1) and then centred by doubling and subtracting 1. The resulting value was then multiplied by the corresponding food parameter-specific inflammatory effect score (derived from a comprehensive literature review of 1943 peer-reviewed articles) and summed to yield the overall E-DII score. A higher E-DII score indicates a more pro-inflammatory diet. The systematic review was conducted through a comprehensive search of the National Library of Medicine database from 1950 through 2010, and the literature search strategy along with inclusion criteria were described in detail in the DII development paper [46]. The maternal E-DII score in ALPHABET was generated from 24 to 28 dietary parameters (out of 44 possible; as energy intake has been intrinsically adjusted for in E-DII, it

is not considered as a separate parameter) in all cohorts except for Generation R, which has 20 dietary parameters (see Additional file 1: Table S3). In available cohorts (except EDEN), child E-DII scores were also generated. When calculated from all the 45 possible food parameters (including energy intake), DII scores ranged from  $-8.87$  (most anti-inflammatory) to  $+7.98$  (most pro-inflammatory); however, when derived from 25 to 30 food parameters, the range seen for many population is from  $-5.5$  to  $+5.5$  [19]. In our constituent studies, the range of E-DII is within  $-5.5$  to  $+5.5$ , supporting that they have been calculated correctly. The range for Generation R using only 20 parameters appears comparable to other cohorts (see Additional file 1: Fig. S1). We thus believe that the E-DII score captures dietary inflammatory potential sufficiently in our study.

#### **Derivation of maternal dietary quality score**

Dietary quality was assessed by degree of adherence to the Dietary Approaches to Stop Hypertension (DASH) diet. The moderation and harmonization process for DASH score generation within the ALPHABET consortium has been described elsewhere [36]. The derivation of the DASH score in ALPHABET was based mainly on the index proposed by Fung et al. [47], which ranks an individual's diet based on population quintile ranking. We deemed Fung et al.'s approach more suitable for our FFQ derived data, which aims to rank participants according to their intakes rather than absolute estimation of food intakes, as compared with other ranking approaches based on whether one meets recommended servings of foods [48]. The final ALPHABET DASH score comprised 8 components (see Additional file 1: Table S4). For food components with higher intake recommended (fruits, vegetables excluding potatoes, total grains, non-full-fat dairy products, and nuts/seeds/legumes), participants in the highest quintile received a score of 5 while those in the lowest quintile received a score of 1. Reverse scoring was applied to food components with moderation recommended (red and processed meats, sugar-sweetened beverages/sweets/added sugars, and sodium). The DASH score has a theoretical range of 8 to 40, with a higher score reflecting a higher dietary quality.

#### **Outcomes**

The primary outcome was childhood overweight and obesity (OWOB), defined as age- and sex-specific body mass index  $z$  score (BMI  $z$ )  $> 85$ th percentile [49]. BMI was calculated from reported or measured weight and height using the formula weight (in kg)/height (in  $m^2$ ), which was subsequently converted to  $z$ -scores using the WHO Child Growth Standards for 0–5 years [50] and 5–19 years [51]. Secondary outcomes were sum of

skinfold thickness (SST; subscapular skinfold + triceps skinfold, mm), fat mass index (FMI,  $kg/m^2$ ) and fat-free mass index (FFMI,  $kg/m^2$ ) in available cohorts (see Additional file 1: Table S5 for outcome data availability). Body composition measures used in this study were based on bioelectrical impedance analysis, except for SWS, which used dual-energy X-ray absorptiometry. Outcomes were assessed in early (pre-school) [mean (SD) age: 2.8 (0.3) years], mid [6.1 (0.6) years] and late-childhood [10.6 (1.2) years] [52, 53].

#### **Covariates**

Potential confounders and relevant covariates were identified from literature and harmonized for subsequent analysis. These were maternal age at delivery (in years), maternal height (in cm), pre-pregnancy BMI (in  $kg/m^2$ ), maternal educational status (study-specific definition of low/medium/high), self-reported maternal birthplace/ethnicity (European-born/White or non-European-born/non-White), maternal cigarette smoking [never/ever (stopped during the pregnancy)/current (continued during the pregnancy)], maternal alcohol intake during pregnancy (yes/no), maternal parity (primiparous/multiparous) and child exact age at anthropometry measurement (in months) and sex (male/female). These data were originally abstracted from birth records or collected using questionnaires (interviewer- or self-administered).

#### **Statistical analysis**

Participants' characteristics were summarized for the ALPHABET consortium and according to its constituent studies. These were limited to participants with availability of the exposure (maternal diet) and main outcome (childhood BMI measurement at any time point) variables. We further excluded participants ( $n = 396$ ) with likely implausible energy intakes ( $< 500$  or  $> 3500$  kcal/day) to avoid extreme misreporting [54, 55].

A two-stage individual participant data meta-analysis was used to assess the associations between maternal diet quality and inflammatory potential and childhood adiposity outcomes. First, cohort-specific effect estimates were generated by using linear and logistic regression for continuous and binary outcomes, respectively. The effect estimates were subsequently pooled using random-effects meta-analysis, which considers both within- and between-study variability. Cochran's  $Q$  test and  $I^2$  statistic were used to assess statistical heterogeneity among included studies [56, 57].

The aforementioned a priori selected covariates were adjusted. Missing covariate information was imputed using cohort-specific means (continuous variables) or modal categories (categorical variables). Complete case analysis yielded largely similar results and did not affect study conclusions (results not shown).



We also conducted several sensitivity analyses. First, we limited our analysis to European-born/White participants (which make up 89% of the study population) to reduce heterogeneity in participants' characteristics. Second, we excluded participants with gestational diabetes, gestational hypertension and pre-eclampsia to see if associations persist in a subset of relatively low-risk pregnancies. Third, a stricter definition of obesity was used (> 95th percentile of age- and sex-specific z-score) to investigate whether maternal dietary quality and inflammatory potential can impact more severe childhood obesity. To explore potential mechanism related to inflammation, we mutually adjusted for DASH and E-DII scores in the same model. For statistically significant associations, we further tested potential mediation through dietary inflammation or dietary quality using mixed effects (with random intercept for each cohort) causal mediation model through the 'Mediation' package in R version 3.6.3 (R Foundation for Statistical Computing, Vienna, Austria). Because we previously showed that a low quality and pro-inflammatory maternal diet was associated with lower birth size [58], we further investigated whether birthweight is a potential mediator in the current study. As with birth weight, gestational age is also known to influence both growth and body composition in childhood, so we conducted analysis further adjusting for gestational age. Child E-DII scores were available in all cohorts except EDEN and were also examined as a potential mediator for maternal diet vs late-childhood adiposity relationships (because child E-DII scores were mostly examined during mid to late-childhood). Child E-DII score was used over child DASH score (not generated) due to logistical constraints, because childhood diet was not the main focus of the ALPHABET consortium. Most cohorts also used a shortened FFQ for child dietary intake assessment, causing an insufficient number of food items in several food groups for DASH score generation (DII is less affected because it has predominantly nutrient parameters). In addition, although the child DII score has been developed and validated [59], we are not aware of similar validation being conducted for a child version of the DASH score.

We investigated whether child sex was a potential modifier of the associations of maternal dietary quality and inflammatory potential with offspring adiposity outcomes by including the multiplicative interaction terms into the model one at a time. This was done using participant-level data for each cohort, and the estimates were subsequently pooled. When  $P$ -interaction was < 0.10, downstream stratification analyses were conducted.

All analyses, unless otherwise specified, were performed using the statistical software Stata version 13.1 (StataCorp, College Station, TX, USA), and statistical significance was defined as two-sided  $P$  values < 0.05.

Because many statistical tests were conducted, the threshold of  $P < 0.05$  is appropriate for analyses concerning our primary outcome i.e. childhood OWOB. Other analyses involving secondary outcomes, albeit reaching statistical significance, should be considered as hypothesis generating and such findings need to be replicated in further studies.

## Results

The current analysis included up to 16,295 mother-child pairs from seven European studies. Overall, the study mothers had a mean (SD) age of 30.2 (4.6) years at delivery and a mean BMI of 23.4 (4.2) kg/m<sup>2</sup> (Additional file 1: Table S1). Mean (SD) [range] of dietary scores were: pre-pregnancy E-DII = 0.0 (1.7) [- 4.7 to 4.3]; pregnancy E-DII = 0.1 (1.6) [- 5.4 to 5.5]; pre-pregnancy DASH = 24.3 (4.3) [10 to 37]; and pregnancy DASH = 24.3 (4.2) [10 to 38]. Pearson's correlation coefficients between E-DII and DASH were - 0.59 for pre-pregnancy and - 0.49 during pregnancy (both  $P < 0.001$ ) (also see Additional file 1: Fig. S2 for scatter plots). The percentages of children classified as OWOB ranged from 8.1% (EDEN) to 21.6% (ALSPAC) during early-childhood, 6.4% (EDEN) to 23.8% (Lifeways) during mid-childhood and 7.0% (EDEN) to 19.1% (Lifeways) during late-childhood.

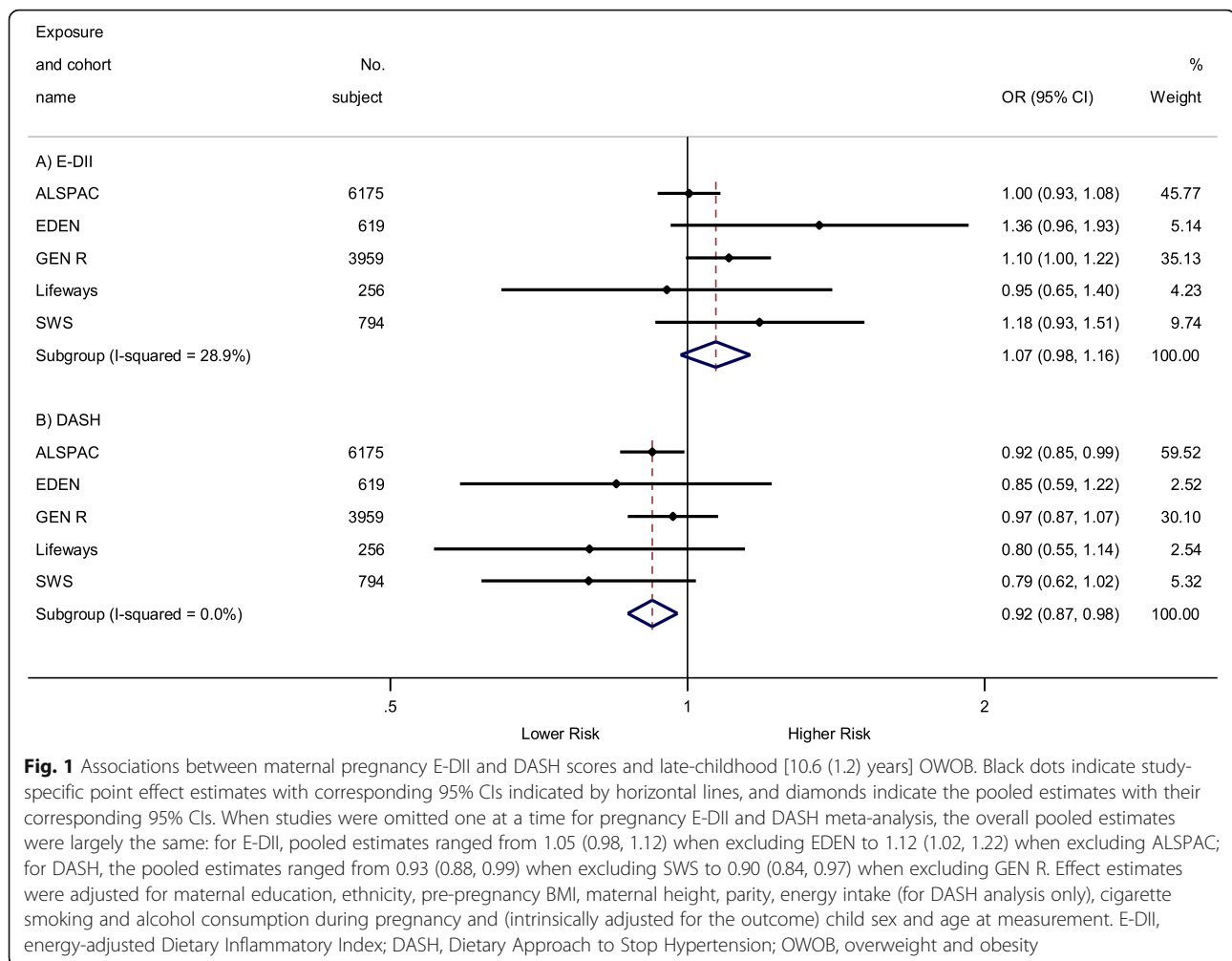
### Associations of E-DII and DASH scores with primary outcome (OWOB)

The main associations (involving greatest numbers of mother-child pairs) between maternal whole pregnancy E-DII and DASH scores and late-childhood OWOB are summarized in Fig. 1. A higher maternal DASH score (higher dietary quality) during whole pregnancy was associated with a lower odds of late-childhood OWOB [OR (95% CI) 0.92 (0.87, 0.98) per 1-SD increase in DASH score], whereas no statistically significant association was observed for whole-pregnancy E-DII score [OR (95% CI) 1.07 (0.98, 1.16) per 1-SD increase in E-DII score;  $P > 0.05$ ]. These associations were of similar magnitude for early- and late-pregnancy (instead of whole-pregnancy) dietary scores with slight variations in statistical significance (Table 1).

In general, no consistent associations were observed between maternal E-DII and DASH scores with regards to early- and mid-childhood OWOB. The only exception is that higher late-pregnancy E-DII score was associated with a lower odds of early-childhood OWOB [OR (95% CI) 0.91 (0.83, 1.00)].

### Associations of E-DII and DASH scores with secondary adiposity measures

Similar to the primary outcome, associations between maternal dietary scores and secondary adiposity



measures were only observed during late-childhood (Table 2). A higher whole pregnancy E-DII score was associated with a lower late-childhood FFMI [ $\beta$  (95% CI)  $-0.06$  ( $-0.08, -0.03$ )  $\text{kg}/\text{m}^2$  per 1-SD increase in E-DII score]. In contrast, a higher whole pregnancy DASH score was associated with a lower late-childhood FMI [ $\beta$  (95% CI)  $-0.09$  ( $-0.15, -0.03$ )  $\text{kg}/\text{m}^2$ ]. Across different pregnancy periods, the point estimates were in the same direction and of comparable magnitude, though the sample sizes and statistical significance varied (some analyses include only 1 study). No other apparent associations were observed for other periods or between maternal E-DII, DASH scores and childhood SST.

### Sensitivity analyses

When non-European-born/non-White participants were excluded, the aforementioned associations were stronger (i.e. estimates moved away from null) (Additional file 1: Table S6 and Table S7). In contrast, there was a slight attenuation between maternal DASH and late-childhood OWOB (but not late-childhood FMI) when mothers

with pregnancy complications were removed (Additional file 1: Table S8 and Table S9) or in models with mutual adjustment of the dietary scores (Additional file 1: Table S10 and Table S11); however, the overall patterns of associations remained the same. Further causal mediation analyses showed little evidence of mediation through the other dietary score for the significant associations between whole pregnancy dietary quality and inflammation and late childhood OWOB/adiposity. The proportions mediated by dietary inflammation on higher dietary quality vs. lower FMI relationship was 5.5% ( $P = 0.73$ ) and that on higher dietary quality vs. lower OWOB odds was 13.1% ( $P = 0.48$ ). For the significant association between more pro-inflammatory diet and lower FFMI, the proportion mediated by dietary quality was 7.0% ( $P = 0.69$ ). When a stricter childhood obesity outcome was used ( $>95$ th sex-and-age-specific BMI  $z$ -score), most of the abovementioned point estimates were stronger, except for late-pregnancy E-DII and early-childhood obesity which was largely attenuated (Additional file 1: Table S12); the confidence intervals became overall

**Table 1** Associations between maternal E-DII and DASH scores (per 1-SD increase) and childhood OWOB (BMI z-score > 85th percentile)

	Early-childhood		Mid-childhood		Late-childhood	
	OR (95%CI)	I <sup>2</sup> (%)	OR (95% CI)	I <sup>2</sup> (%)	OR (95% CI)	I <sup>2</sup> (%)
<b>E-DII</b>						
Pre	0.94 (0.84, 1.05)	0	1.01 (0.89, 1.15)	0	0.96 (0.81, 1.15)	0
Np/Nc	3122/2		2635/2		1658/2	
Preg	0.94 (0.87, 1.02)	0	0.97 (0.91, 1.03)	0	1.07 (0.98, 1.16)	29
Np/Nc	6111/6		8717/7		11,803/5	
Early	0.98 (0.89, 1.07)	0	0.97 (0.91, 1.04)	0	1.09 (0.999, 1.19)	0
Np/Nc	4103/4		6903/5		5063/3	
Late	0.91 (0.83, 0.997)*	0	0.97 (0.85, 1.11)	21	1.07 (0.93, 1.23)	41
Np/Nc	4027/3		3419/3		7779/3	
<b>DASH</b>						
Pre	0.98 (0.80, 1.22)	62	0.93 (0.81, 1.06)	0	0.96 (0.80, 1.16)	0
Np/Nc	3122/2		2635/2		1658/2	
Preg	0.98 (0.91, 1.06)	0	1.03 (0.96, 1.11)	3	0.92 (0.87, 0.98)**	0
Np/Nc	6111/6		8717/7		11,803/5	
Early	0.99 (0.90, 1.09)	0	1.05 (0.97, 1.14)	7	0.86 (0.72, 1.04)	55
Np/Nc	4103/4		6903/5		5065/3	
Late	1.01 (0.92, 1.11)	0	0.96 (0.85, 1.07)	0	0.91 (0.85, 0.98)*	0
Np/Nc	4027/3		3419/3		7779/3	

Values are adjusted pooled effect estimates [OR (95% CI)] expressed for a 1-SD increment in dietary scores, heterogeneity measure (I<sup>2</sup>) and the number of participants and studies included (Np/Nc) across different outcomes and conception periods, as labelled. Effect estimates were adjusted for maternal education, ethnicity, pre-pregnancy BMI, maternal height, parity, energy intake (for DASH analysis only), cigarette smoking and alcohol consumption during pregnancy and (intrinsically adjusted for the outcome) child sex and age at measurement

OR (effect estimates) and the I<sup>2</sup> (heterogeneity) test have separate P values

E-DII energy-adjusted Dietary Inflammatory Index, DASH Dietary Approaches to Stop Hypertension, OWOB overweight and obesity, I<sup>2</sup> I-squared, Pre pre-pregnancy, Preg pregnancy, Early early pregnancy, Late late pregnancy, Np number of participants included, Nc number of cohorts included

\*P < 0.05, \*\*P < 0.01

wider, probably due to the smaller number of cases. When birthweight was included in the model, the estimates changed little (Additional file 1: Table S13 and Table S14), suggesting little mediation by birth size. Similarly, results remained the same with adjustment for gestational age at birth (Additional file 1: Table S15 and Table S16). Associations also remained very similar when all children born small for gestational age were excluded (results not shown). In cohorts with child E-DII scores, further adjusting for child dietary inflammatory potential also led to very similar estimates (Additional file 1: Table S17), and the association reported for higher maternal E-DII vs. lower late-childhood FFMI remained statistically significant. Similarly, results remained essentially unchanged with further adjustment for whether the child was ever breastfed (results not shown).

#### Sex-stratified analysis

Some potential sex-interactions were noted, especially for mid- and late-childhood FMI and FFMI outcomes (see Additional file 1: Table S18 and S19). In stratified analyses, the associations between a higher maternal

pregnancy E-DII score and higher mid-childhood FMI, and a higher DASH score with lower mid-childhood FMI, were stronger in females (Fig. 2a) (all P-for-sex interactions < 0.10). In contrast, higher maternal pregnancy E-DII score was associated with lower [ $\beta$  (95% CI) - 0.10 (-0.14, -0.06) kg/m<sup>2</sup>], whereas higher DASH score was associated with higher [ $\beta$  (95% CI) 0.06 (0.02, 0.09) kg/m<sup>2</sup>], late-childhood FFMI in males (Fig. 2b) (all P-for-sex interactions < 0.10).

#### Discussion

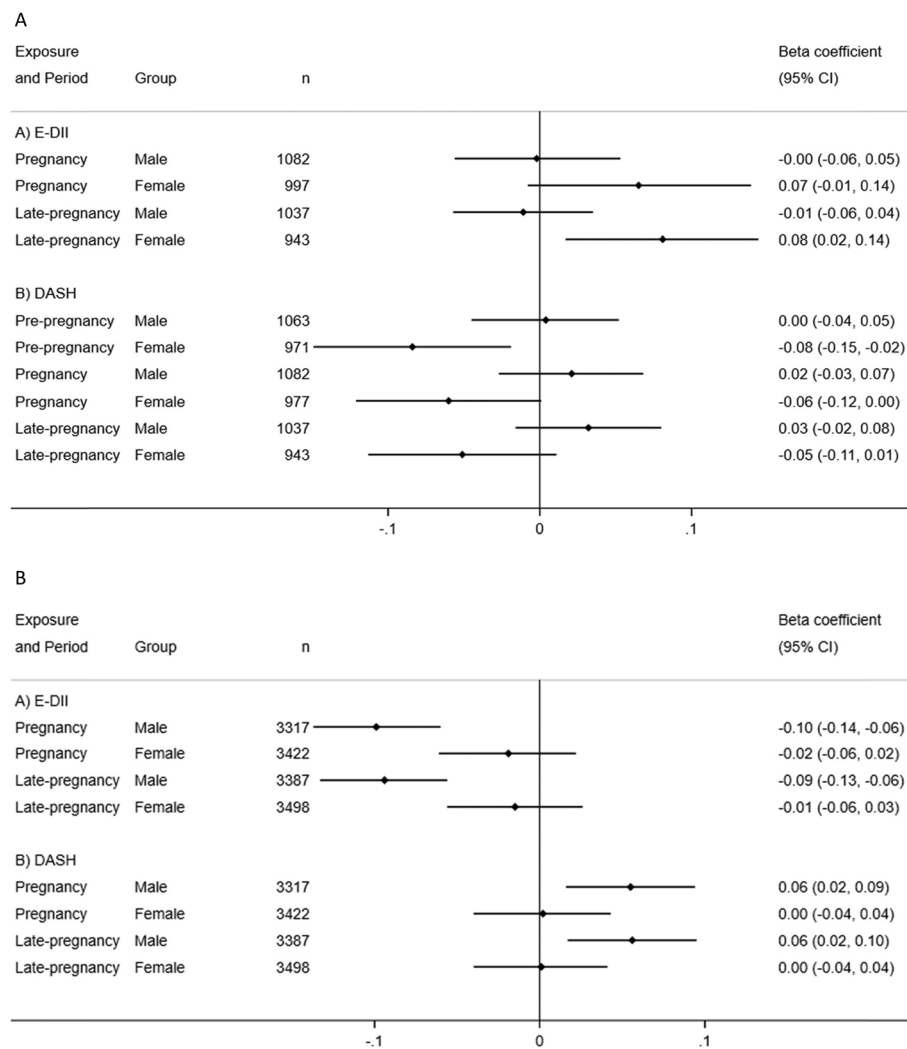
We observed that higher maternal dietary quality (higher DASH) during pregnancy was associated with a lower odds of late-childhood OWOB and lower FMI. In contrast, a more pro-inflammatory (higher E-DII) diet during pregnancy was associated with lower late-childhood FFMI. Furthermore, sex interactions were observed such that the associations of higher maternal DASH, lower E-DII and higher late-childhood FFMI were stronger in male offspring, while associations of lower maternal DASH, higher E-DII and higher mid-childhood FMI were stronger in female offspring. Contrary to our hypothesis, dietary score associations at different pregnancy stages were quite

**Table 2** Associations between maternal E-DII and DASH scores (per 1-SD increase) and secondary childhood adiposity measures

	Early-childhood (2.8 ± 0.3 years)						Mid-childhood (6.1 ± 0.6 years)						Late-childhood (10.6 ± 1.2 years)						
	SST, mm		FMI, kg/m <sup>2</sup>		FFMI, kg/m <sup>2</sup>		SST, mm		FMI, kg/m <sup>2</sup>		FFMI, kg/m <sup>2</sup>		SST, mm		FMI, kg/m <sup>2</sup>		FFMI, kg/m <sup>2</sup>		
	β (95% CI)	r <sup>2</sup> (%)	β (95% CI)	r <sup>2</sup> (%)	β (95% CI)	r <sup>2</sup> (%)	β (95% CI)	r <sup>2</sup> (%)	β (95% CI)	r <sup>2</sup> (%)	β (95% CI)	r <sup>2</sup> (%)	β (95% CI)	r <sup>2</sup> (%)	β (95% CI)	r <sup>2</sup> (%)	β (95% CI)	r <sup>2</sup> (%)	
<b>E-DII</b>																			
Pre	-0.11 (-0.23, 0.01)	0	-0.04 (-0.22, 0.14)	0	-0.01 (-0.04, 0.03)	0	-0.04 (-0.08, 0.003)	0	-0.17 (-0.76, 0.41)	-	0.03 (-0.10, 0.16)	-	-0.03 (-0.10, 0.05)	-	-0.03 (-0.10, 0.05)	-	-0.03 (-0.10, 0.05)	-	
Np/Nc	2959/2		2536/2		2034/2		2038/2		1025/1		848/1		848/1		848/1		848/1		
Preg	-0.01 (-0.14, 0.13)	13	0.09 (-0.14, 0.33)	29	0.03 (-0.03, 0.09)	25	-0.06 (-0.16, 0.03)	67*	0.41 (-0.23, 1.06)	-	0.03 (-0.03, 0.10)	0	-0.06 (-0.08, -0.03)***	0	-0.06 (-0.08, -0.03)***	0	-0.06 (-0.08, -0.03)***	0	
Np/Nc	2749/3		3184/4		2059/4		2063/4		780/1		6739/2		6739/2		6739/2		6739/2		
Early	0.07 (-0.10, 0.24)	0	-0.01 (-0.28, 0.25)	0	0.01 (-0.10, 0.13)	41	-0.13 (-0.32, 0.06)	77*	0.20 (-0.43, 0.82)	-	0.04 (-0.09, 0.17)	-	-0.04 (-0.12, 0.04)	-	-0.04 (-0.12, 0.04)	-	-0.04 (-0.12, 0.04)	-	
Np/Nc	1716/2		1513/2		1120/3		1119/3		836/1		702/1		702/1		702/1		702/1		
Late	-0.04 (-0.17, 0.08)	0	0.15 (-0.07, 0.38)	17	0.03 (-0.01, 0.07)	0	-0.001 (-0.04, 0.04)	0	0.31 (-0.28, 0.90)	-	0.04 (-0.03, 0.11)	12	-0.04 (-0.10, 0.01)	52	-0.04 (-0.10, 0.01)	52	-0.04 (-0.10, 0.01)	52	
Np/Nc	2880/2		3182/3		1980/2		1984/2		969/1		6885/2		6885/2		6885/2		6885/2		
<b>DASH</b>																			
Pre	-0.03 (-0.16, 0.09)	2	-0.18 (-0.36, 0.01)	0	-0.04 (-0.08, 0.003)	0	0.03 (-0.01, 0.08)	0	-0.29 (-0.88, 0.31)	-	-0.10 (-0.23, 0.03)	-	0.05 (-0.03, 0.12)	-	0.05 (-0.03, 0.12)	-	0.05 (-0.03, 0.12)	-	
Np/Nc	2959/2		2536/2		2034/2		2038/2		1025/1		848/1		848/1		848/1		848/1		
Preg	-0.06 (-0.18, 0.07)	0	-0.02 (-0.29, 0.26)	41	-0.02 (-0.05, 0.02)	0	0.01 (-0.03, 0.06)	0	-0.54 (-1.21, 0.12)	-	-0.09 (-0.15, -0.03)**	0	0.03 (-0.002, 0.06)	0	0.03 (-0.002, 0.06)	0	0.03 (-0.002, 0.06)	0	
Np/Nc	2749/3		3184/4		2059/4		2063/4		780/1		6739/2		6739/2		6739/2		6739/2		
Early	-0.10 (-0.28, 0.08)	0	0.10 (-0.41, 0.61)	68	-0.07 (-0.15, 0.01)	0	0.03 (-0.03, 0.09)	0	-0.58 (-1.22, 0.06)	-	-0.12 (-0.25, 0.01)	-	0.06 (-0.02, 0.14)	-	0.06 (-0.02, 0.14)	-	0.06 (-0.02, 0.14)	-	
Np/Nc	1716/2		1513/2		1120/3		1119/3		836/1		702/1		702/1		702/1		702/1		
Late	-0.01 (-0.14, 0.11)	0	-0.06 (-0.24, 0.13)	0	-0.01 (-0.05, 0.03)	0	-0.001 (-0.05, 0.04)	0	-0.28 (-0.88, 0.32)	-	-0.07 (-0.13, -0.01)*	0	0.03 (-0.002, 0.05)	0	0.03 (-0.002, 0.05)	0	0.03 (-0.002, 0.05)	0	
Np/Nc	2880/2		3182/3		1980/2		1984/2		969/1		6885/2		6885/2		6885/2		6885/2		

Values are adjusted pooled effect estimates [β (95% CI)] expressed for a 1-SD increment in dietary scores, heterogeneity measure (r<sup>2</sup>), and number of participants and studies included (Np/Nc) across different outcomes and conception periods, as labelled. Effect estimates were adjusted for maternal education, ethnicity, pre-pregnancy BMI, maternal height, parity, energy intake (for DASH analysis only), cigarette smoking and alcohol consumption during pregnancy and child sex and age at measurement  
 β (effect estimates) and the r<sup>2</sup> (heterogeneity) test have separate P values  
 E-DII energy-adjusted Dietary Inflammatory Index, DASH Dietary Approaches to Stop Hypertension, SST sum of skinfold thickness, FMI fat mass index, FFMI fat-free mass index, r<sup>2</sup> I-squared, Pre pre-pregnancy, Preg pregnancy, Early early pregnancy, Late late pregnancy, Np number of participants included, Nc number of cohorts included  
 \*P < 0.05, \*\*P < 0.01, \*\*\*P < 0.001





**Fig. 2 a** Associations of maternal E-DII and DASH scores with children’s FMI during mid-childhood by child sex and exposure time-point (only adjusted pooled estimates shown; all *P*-interactions < 0.10). Black dots indicate pooled point effect estimates with corresponding 95% CIs indicated by horizontal lines. Effect estimates were adjusted for maternal education, ethnicity, pre-pregnancy BMI, maternal height, parity, energy intake (for DASH analysis only), cigarette smoking and alcohol consumption during pregnancy and child sex and age at measurement. E-DII, energy-adjusted Dietary Inflammatory Index; DASH, Dietary Approaches to Stop Hypertension; FMI, fat mass index. **b** Associations of maternal E-DII and DASH scores with children’s FFMI during late-childhood by child sex and exposure time-point (only adjusted pooled estimates shown; all *P*-interactions < 0.10). Black dots indicate pooled point effect estimates with corresponding 95% CIs indicated by horizontal lines. Effect estimates were adjusted for maternal education, ethnicity, pre-pregnancy BMI, maternal height, parity, energy intake (for DASH analysis only), cigarette smoking and alcohol consumption during pregnancy and child sex and age at measurement. E-DII, energy-adjusted Dietary Inflammatory Index; DASH, Dietary Approaches to Stop Hypertension; FFMI, fat-free mass index

similar. Thus, the discussion of results will be based on the whole pregnancy period with the highest number of participants.

Previous studies showed that in US and Greek children (total *n* = 1566), higher maternal Mediterranean Diet Score (reflecting higher dietary quality) was associated with lower mid-childhood BMI *z*-score and SST [20]. In the Mothers and Infants LinKed for Health study (*n* = 354), higher maternal diet quality (higher score on Healthy Eating Index) from pregnancy through

3 months postpartum was associated with lower infant weight-for-length *z*-score from birth to 6 months and body fat % at 6 months [21]. In Project Viva (*n* = 992), a more pro-inflammatory diet (higher DII scores) during pregnancy was associated with higher mid-childhood (median age: 7.7 years) adiposity, e.g. FMI and SST, but attenuated after adjustment for covariates [22]. The Healthy Start Study (*n* = 1078) reported that higher DII scores in obese mothers were associated with increased neonatal fat mass [23]. Overall, results from our and

these previous studies suggested beneficial influence of better maternal dietary quality and lower dietary inflammatory potential on offspring adiposity measures.

That maternal diet can influence offspring adiposity is biologically plausible. Maternal inflammation has been associated with higher offspring adiposity in both animal [16] and human [15] studies. One potential mechanism underpinning the association between overall healthier maternal diet and lower offspring adiposity could be lowered maternal inflammation due to high intakes of foods rich in anti-oxidants such as fruit and vegetables [60, 61]. However, our mutual adjustment analyses did not suggest that the influence of higher maternal DASH scores on childhood adiposity were mostly explained by maternal dietary inflammatory potential. Child dietary inflammatory potential also did not seem to meaningfully alter the maternal E-DII vs postnatal adiposity associations, suggesting that childhood diet/influence of shared familial diet is not a major mediator for our observations. An alternative mechanism could be maternal diet-induced modifications of epigenetic patterns in offspring. Individuals who were prenatally exposed to extreme maternal undernutrition demonstrated persistent epigenetic differences 6 decades later, as compared to their unexposed, same-sex siblings [62]. Milder in utero nutritional challenges such as lower maternal dietary quality (low adherence to Mediterranean diet) [63], carbohydrate amount [64] and quality [65] have also been shown to induce epigenetic differences in offspring at birth. Moreover, some of these epigenetic effects, e.g. greater methylation of RXRA chr9:136355885+, may be correlated with greater adiposity in later childhood [64].

Adipocyte proliferation is high during the first year of life and from age 9–14 years but remains low in between [64, 66]. Due to the availability of data in our constituent cohorts, early childhood adiposity measures were recorded at a mean age of 2.8 years. Thus, we might have missed the window to detect more apparent associations between maternal diet and early infancy adiposity. It is also possible that alterations of gene expression in offspring induced by maternal diets can present themselves only later in life. For example, in one animal study, increased expression of PPAR $\alpha$  and CPT-1 (key genes in lipid and carbohydrate metabolism) was detected only in adult, but not neonatal, offspring of pregnant rat dams fed a protein-restricted diet [67]. However, these postulated mechanisms should be further investigated and confirmed in a human population with greater granularity of adiposity measurements.

Contrary to our expectation, higher E-DII score was associated with a lower odds of early childhood OWOB. The BMI curve in childhood is characterized by an initial increase until a peak at 1 year old, then dropping to a nadir around age 6 and starts rising again (a

phenomenon termed adiposity rebound). However, there is variation of timing of adiposity rebound and children or adults who become obese have been reported as having an earlier adiposity rebound (around 3 years old) in early childhood [68]. Those with a normal adiposity rebound timing might thus have a higher BMI compared to early rebounders, a potential explanation of this unexpected result. This association was not present when a stricter cut-off for obesity (>95th percentile) was used, indicating that the unexpected association was influenced by a population that is less morbid. Alternatively, this unexpected association could represent chance finding as it is unlikely that a pro-inflammatory maternal diet is protective against childhood OWOB.

While a very useful and relevant measure, a higher BMI may not only arise from greater body fat, but also from higher fat-free mass, making it an imperfect measure of adiposity [69, 70]. The differential magnitude and velocity of fat and fat-free mass accretion during different growth periods further complicates the interpretation of changes in childhood BMI over time [71, 72]. Our results suggest that dietary inflammatory potential and overall quality may influence different aspects of offspring body composition. For example, we observed that a higher E-DII score (pro-inflammatory maternal diet) tended to associate with a higher odds of late childhood OWOB and lower FFMI; a lower FFMI can reflect overall lower muscle or lean mass, which has been associated with a higher risk of metabolic syndrome in children [73, 74]. However, for our late-childhood FMI and FFMI outcomes, only two UK cohorts (SWS and ALSPAC) were included for our analysis. Therefore, the generalizability of our observations should be confirmed in further studies. Nonetheless, the sex-interaction noted for maternal dietary quality and inflammatory potential with FMI and FFMI during mid- and late-childhood in our study merits further investigation, as sexual dimorphism in body composition and epigenetic changes in response to early life factors is well-documented [75–79]. Difference in body composition between boys and girls accentuates during later childhood in response to hormonal changes and could be an explanation of our results [80].

The large sample size and substantial efforts spent in harmonizing and curating data across multiple studies are the major strengths of our study. To our knowledge, the current study represents the largest multi-centre collaborative effort in investigating the influence of maternal dietary quality and inflammatory potential on childhood adiposity outcomes.

However, some limitations are worth noting. Our study can mainly be generalized to European-born/White women in developed countries. Nonetheless, we did include studies from a range of geographical regions

within Europe (Ireland, British Isles, Western and Eastern Continental Europe), in which some diversity in dietary intakes and sociodemographic characteristics was observed. Self-reported dietary data were used, which might have increased non-differential measurement errors that may bias results towards the null. Moreover, the FFQs were mainly validated for European-born/White women (e.g. in Gen R), potentially introducing heterogeneity and more measurement errors for non-European-born/non-White women. Indeed, in our analyses restricted to European-born/White population, the observed associations strengthened. We have applied a commonly used energy intake cut-off for pregnant women [54, 55] to exclude implausible dietary data. Other more conservative approaches such as specifically excluding misreporters (under- and over-reporters) of dietary intakes could be considered in future studies. Generation of E-DII and the DASH scores in our study might be subject to measurement errors as they are dependent on participants' self reports and involved variable (20–28 out of 44 possible) dietary parameters, and 48.1–79.1% of the total FFQ food items, respectively. However, former studies have found a good predictive ability of E-DII with as few as 18 E-DII parameters [19], while each food component of the DASH score comprised at least five food items [36]. In some cohorts, children's weights were self-reported rather than measured, potentially resulting in higher random measurement errors as it is unlikely that the errors depend on exposure. We did not find any consistent association with SST, probably due to challenges to obtain accurate skinfold measurements in young children, resulting in larger random measurement errors [81]. As with any observational study, the influence of residual confounding cannot be completely ruled out. For instance, education attainment categorization and subsequently confounding control was presumably less precise in this study due to the need to harmonize the variable across cohorts. Furthermore, although we have harmonized and adjusted for many essential covariates, future studies should also consider other potential covariates such as physical activity and mediators such as gestational weight gain and detailed data on breastfeeding duration. Finally, causality cannot be established without further complementary evidence.

## Conclusions

Our individual participant data meta-analysis within a large consortium suggests that pro-inflammatory, low-quality maternal pregnancy diets may adversely influence offspring adiposity and obesity risk, especially during late-childhood. Promoting overall healthy dietary pattern during pregnancy may have lifelong consequences for the offspring. Because most associations were observed at mid-childhood or later, future studies investigating in

utero programming of childhood adiposity may benefit from a longer follow-up.

## Supplementary Information

The online version contains supplementary material available at <https://doi.org/10.1186/s12916-021-01908-7>.

### Additional file 1: Table S1-S19 and Fig. S1-S2. Table S1

Characteristics of study participants according to included studies. **Table S2** Characteristics of the cohorts in the ALPHABET consortium. **Table S3** Food parameters included for E-DII generation. **Table S4** Food items included for DASH score generation. **Fig. S1** Boxplots of E-DII scores in included studies. **Table S5** Availability of outcome measures. **Fig. S2** Scatterplots of DASH score against E-DII score in each study. **Table S6** Association between maternal E-DII and DASH scores (per 1-SD increase) and childhood OWOB- excluding non-European-born/non-White participants. **Table S7** Association between maternal E-DII and DASH scores (per 1-SD increase) and secondary childhood adiposity measures- excluding non-European-born/non-White participants. **Table S8** Association between maternal E-DII and DASH scores (per 1-SD increase) and childhood OWOB- excluding mothers with pregnancy complications. **Table S9** Association between maternal E-DII and DASH scores (per 1-SD increase) and secondary childhood adiposity measures- excluding mothers with pregnancy complications. **Table S10** Association between maternal E-DII and DASH scores (per 1-SD increase) and childhood OWOB- with mutual adjustment of E-DII and DASH. **Table S11** Association between maternal E-DII and DASH scores (per 1-SD increase) and secondary childhood adiposity measures- with mutual adjustment of E-DII and DASH. **Table S12** Association between maternal E-DII and DASH scores (per 1-SD increase) and childhood obesity (BMI z-score > 95th percentile). **Table S13** Association between maternal E-DII and DASH scores (per 1-SD increase) and childhood OWOB- with further adjustment of birthweight. **Table S14** Association between maternal E-DII and DASH scores (per 1-SD increase) and secondary childhood adiposity measures- with further adjustment of birthweight. **Table S15** Association between maternal E-DII and DASH scores (per 1-SD increase) and childhood OWOB- with further adjustment of gestational age. **Table S16** Association between maternal E-DII and DASH scores (per 1-SD increase) and secondary childhood adiposity measures- with further adjustment of gestational age. **Table S17** Association between maternal E-DII (per 1-SD increase) and late-childhood OWOB and adiposity measures- with and without further adjustment for child E-DII score in cohorts with child E-DII data. **Table S18** Pooled *P*-values for sex-interaction between maternal E-DII and DASH score and offspring adiposity outcomes. **Table S19** Stratified estimates for other sex-interactions between maternal E-DII and DASH scores and offspring adiposity outcomes (all *P*-interactions < 0.10).

## Abbreviations

ALSPAC: The Avon Longitudinal Study of Parents and Children; BMI: Body mass index; DASH: Dietary Approaches to Stop Hypertension; DOHaD: Developmental Origins of Health and Diseases; EDEN: The study on the pre- and early postnatal determinants of child health and development; E-DII: Energy-adjusted Dietary Inflammatory Index; FFMI: Fat-free mass index; FFQ: Food frequency questionnaire; FMI: Fat mass index; Generation R: The Generation R study; Lifeways: The Lifeways Cross-Generation Cohort Study; OWOB: Overweight and obesity; REPRO\_PL: The Polish Mother and Child Cohort; ROLO: The Randomised cOntrol trial of LOw glycaemic index diet during pregnancy study; SST: Sum of skinfold thickness; SWS: Southampton Women's Survey; WHO: World Health Organization

## Acknowledgements

*Whole consortium:* the authors acknowledge all investigators working on the ERA-HDHL ALPHABET project and are grateful to all the families in the participating cohorts. ALSPAC: we are extremely grateful to all the families who took part in this study, the midwives for their help in recruiting them, and the whole ALSPAC team, which includes interviewers, computer and laboratory technicians, clerical workers, research scientists, volunteers, managers, receptionists and nurses. Please note that the ALSPAC study website contains details of all available data is available through a fully searchable data

dictionary and variable search tool (<http://www.bristol.ac.uk/alspac/researchers/our-data/>). EDEN: the authors thank the EDEN mother-child cohort study group, whose members are I. Annesi-Maesano, J. Y. Bernard, J. Botton, M.A. Charles, P. Dargent-Molina, B. de Lauzon-Guillain, P. Ducimetière, M. de Agostini, B. Foliguet, A. Forhan, X. Fritel, A. Germa, V. Goua, R. Hankard, B. Heude, M. Kaminski, B. Larroque, N. Lelong, J. Lepeule, G. Magnin, L. Marchand, C. Nabet, F. Pierre, R. Slama, M.J. Saurel-Cubizolles, M. Schweitzer, and O. Thiebaugeorges. Generation R: The Generation R Study is conducted by the Erasmus Medical Centre in close collaboration with the School of Law and the Faculty of Social Sciences at the Erasmus University, Rotterdam, the Municipal Health Service, Rotterdam area, and the Stichting Trombosedienst and Artsenlaboratorium Rijnmond (Star-MDC), Rotterdam. We gratefully acknowledge the contribution of children and their parents, general practitioners, hospitals, midwives and pharmacies in Rotterdam. Lifeways: We would like to thank all members of the Lifeways cohort for their valuable contribution to the study. The participation of families is much appreciated. REPRO\_PL: We gratefully acknowledge the contribution of children and their parents, hospitals, physicians, and midwives. ROLO: We are grateful to the participating mothers, children, and to the research and clinical staff who enabled us recruit this pregnancy and birth cohort. SWS: We are grateful to the women of Southampton and their children, who gave their time to take part in this study, and to the research nurses and other staff who collected and processed the data

#### Role of the funding source

This work was supported by an award from the European Union's Horizon 2020 research and innovation programme under the ERA-Net Cofund of the Joint Programming Initiative Healthy Diet for Healthy Life (JPI-HDHL) (<http://www.healthydietforhealthylife.eu>). The funder was not involved in study's design, conduct and reporting.

#### Authors' contributions

LW-C and CMP conceived and designed the current study. LW-C led project coordination of a work package within the consortium, data harmonization and curation for the current study, undertook the statistical analysis, interpreted results and wrote the first draft of the manuscript, with supervision from CMP. CMP led the overall ALPHABET project and consortium. AMA, NS, JYB, SMM-B, AAG, JM, MS, KP, WH, AJ, CLR, SRC, NCH, CC, MH, KMG, RG, LD, BH, JRH, FMMA and CCK provided essential data for analyses and were involved in the data harmonization and curation process. All authors provided critical input to the analyses, interpreted the data and revised the manuscript critically. The authors read and approved the final manuscript.

#### Funding

This work was supported by an award from the European Union's Horizon 2020 research and innovation programme under the ERA-Net Cofund of the Joint Programming Initiative Healthy Diet for Healthy Life (JPI-HDHL) (<http://www.healthydietforhealthylife.eu>) action number 696295 (Biomarkers for Nutrition and Health). Co-funding was provided by Science Foundation Ireland, Ireland (Grant Number SFI/16/ERA-HDHL/3360), the UK Biotechnology and Biological Sciences Research Council (ERA-HDHL Biomarkers: BBSRC: BB/P028179/1 and BB/P028187/1), National Centre for Research and Development (ERA-HDHL/01/ALPHABET/1/2017), the ZonMW The Netherlands (no 529051014; 2017)) ALPHABET project (no 696295; 2017) and the French National Agency of Research (reference Anr16227KK). ALSPAC: The UK Medical Research Council and Wellcome (Grant ref: 102215/2/13/2) and the University of Bristol provide core support for ALSPAC. This publication is the work of the authors and Matthew Suderman will serve as guarantor for the contents of this paper. EDEN: The EDEN study was supported by Foundation for medical research (FRM), National Agency for Research (ANR), National Institute for Research in Public Health (IRESP: TGIR cohorte santé 2008 program), French Ministry of Health (DGS), French Ministry of Research, INSERM Bone and Joint Diseases National Research (PRO-A), and Human Nutrition National Research Programs, Paris-Sud University, Nestlé, French National Institute for Population Health Surveillance (InVS), French National Institute for Health Education (INPES), the European Union FP7 programmes (FP7/2007–2013, HELIX, ESCAPE, ENRIECO, Medall projects), Diabetes National Research Program (through a collaboration with the French Association of Diabetic Patients (AFD)), French Agency for Environmental Health Safety (now ANSES), Mutuelle Générale de l'Éducation Nationale a complementary health insurance (MGEN), French national agency for food security, French-speaking

association for the study of diabetes and metabolism (ALFEDIAM). Generation R: The Generation R Study is made possible by financial support from the Erasmus Medical Centre, Rotterdam, the Erasmus University Rotterdam and The Netherlands Organization for Health Research and Development. The project received funding from the European Union's Horizon 2020 research and innovation programme (LIFECYCLE project, grant agreement no 733206; 2016). RG received funding from the Dutch Heart Foundation (grant number 2017 T013), the Dutch Diabetes Foundation (grant number 2017.81.002) and the Netherlands Organization for Health Research and Development (ZonMW, grant number 543003109). The study sponsors had no role in the study design, data analysis, interpretation of data, or writing of this report. Lifeways: The Lifeways Cross-Generation Cohort Study is funded by the Irish Health Research Board (reference HRC/2007/13) and is overseen by an inter-disciplinary steering group. REPRO\_PL: The REPRO\_PL cohort was mainly supported by the Ministry of Science and Higher Education, Poland (PBZ-MEIN-/8/2/2006; contract no. K140/P01/2007/1.3.1.1); by the grant PNR/218-AI-1/07 from Norway through the Norwegian Financial Mechanism within the Polish- Norwegian Research Fund and National Science Centre, Poland (DEC-2014/15/B/NZ7/00998). ROLO: ROLO study is supported by Health Research Board Health Research Centre for Diet and Health Research Ireland and The National Maternity Hospital Medical Fund, and The European Union's Seventh Framework Programme (FP7/2007–2013). SWS: This work was supported by grants from the Medical Research Council, British Heart Foundation, Arthritis Research UK, Food Standards Agency, and the European Union's Seventh Framework (FP7/2007–2013), projects EarlyNutrition and ODIN under grant agreement numbers 289346 and 613977. KMG is supported by the UK Medical Research Council (MC\_UU\_12011/4), the National Institute for Health Research (NIHR Senior Investigator (NF-SI-0515-10042) and the NIHR Southampton Biomedical Research Centre) and the European Union (Erasmus+ Programme Early Nutrition eAcademy Southeast Asia-573651-EPP-1-2016-1-DE-EPPKA2-CBHE-JP).

#### Availability of data and materials

The data that support the findings of this study are available from the individual studies constituting this consortium but restrictions apply to the availability of these data, which were used under license for the current study, and so are not publicly available. Data are however available from the authors upon reasonable request and with permission from the executive committee in charge of the respective studies.

#### Ethics approval and consent to participate

All studies have been approved by the respective local ethical review committees and written consent was obtained from all mothers. Specific cohort approvals are as follows: ALSPAC: ALSPAC Ethics and Law Committee (IRB00003312) and Local Research Ethics Committees; EDEN: Ethics Committee (CCPPRB) and CNIL (Commission Nationale Informatique et Liberté), the French data privacy institution; Generation R: Medical Ethical Committee of the Erasmus Medical Center, Rotterdam; Lifeways: University College Dublin Research Ethics Committee and St. Vincent's University Hospital Research Ethics Committee; REPRO\_PL: Ethical Committee of the Nofer Institute of Occupational Medicine, Łódź, Poland (Decisions No. 7/2007, 3/2008 and 22/2014); ROLO: Ethics Committee of the National Maternity Hospital, Dublin, Ireland; SWS: Southampton and South West Hampshire Research Ethics Committee, ALSPAC Law and Ethics Committee, and the Local Research Ethics Committees.

#### Consent for publication

Not applicable

#### Competing interests

Dr. James R. Hébert owns controlling interest in Connecting Health Innovations LLC (CHI), a company that has licensed the right to his invention of the dietary inflammatory index (DII) from the University of South Carolina in order to develop computer and smart phone applications for patient counselling and dietary intervention in clinical settings. Professor Keith M Godfrey has received reimbursement for speaking at conferences sponsored by companies selling nutritional products and is part of an academic consortium that has received research funding from Abbott Nutrition, Nestec, BenevolentAI Bio Ltd. and Danone. Dr. Nitin Shivappa is an employee of CHI. Other authors declare no conflict of interest.



**Author details**

<sup>1</sup>HRB Centre for Health and Diet Research, School of Public Health, Physiotherapy, and Sports Science, University College Dublin, Dublin, Republic of Ireland. <sup>2</sup>Université de Paris, Centre for Research in Epidemiology and Statistics (CRESS), Inserm, Inrae, F-75004 Paris, France. <sup>3</sup>Arnold School of Public Health, University of South Carolina, Columbia, SC 29208, USA. <sup>4</sup>Connecting Health Innovations, LLC, Columbia, SC 29201, USA. <sup>5</sup>Singapore Institute for Clinical Sciences (SICS), Agency for Science, Technology and Research (A\*STAR), Singapore 117609, Singapore. <sup>6</sup>The Generation R Study Group, Erasmus MC, University Medical Center Rotterdam, Rotterdam, The Netherlands. <sup>7</sup>Department of Pediatrics, Division of Respiratory Medicine and Allergology, Erasmus MC, University Medical Center Rotterdam, Rotterdam, The Netherlands. <sup>8</sup>UCD Perinatal Research Centre, School of Medicine, University College Dublin, National Maternity Hospital, Dublin, Ireland. <sup>9</sup>MRC Integrative Epidemiology Unit, Bristol Medical School, University of Bristol, Bristol, UK. <sup>10</sup>Nofer Institute of Occupational Medicine, Lodz, Poland. <sup>11</sup>MRC Lifecourse Epidemiology Unit (University of Southampton) University Hospital Southampton, Southampton, UK. <sup>12</sup>NIHR Southampton Biomedical Research Centre, University of Southampton and University Hospital Southampton NHS Foundation Trust, Southampton, UK. <sup>13</sup>Institute of Developmental Sciences, Faculty of Medicine, University of Southampton, Southampton, UK. <sup>14</sup>Department of Pediatrics, Erasmus MC, University Medical Center Rotterdam, Rotterdam, The Netherlands. <sup>15</sup>Department of Pediatrics, Division of Neonatology, Erasmus MC, University Medical Center Rotterdam, Rotterdam, The Netherlands.

Received: 28 May 2020 Accepted: 11 January 2021

Published online: 22 February 2021

**References**

- Lobstein T, Jackson-Leach R, Moodie ML, Hall KD, Gortmaker SL, Swinburn BA, et al. Child and adolescent obesity: part of a bigger picture. *Lancet*. 2015;385:2510–20.
- The Lancet. Managing the tide of childhood obesity. *Lancet*. 2015;385:2434.
- Mameli C, Mazzantini S, Zuccotti GV. Nutrition in the First 1000 Days: The Origin of Childhood Obesity. *Int J Environ Res Public Health*. 2016;13(9):838. <https://doi.org/10.3390/ijerph13090838>.
- Blake-Lamb TL, Locks LM, Perkins ME, Woo Baidal JA, Cheng ER, Taveras EM. Interventions for childhood obesity in the first 1,000 days a systematic review. *Am J Prev Med*. 2016;50:780–9.
- Nishtar S, Gluckman P, Armstrong T. Ending childhood obesity: a time for action. *Lancet*. 2016;387:825–7.
- Ravelli AC, van der Meulen JH, Osmond C, Barker DJ, Bleker OP. Obesity at the age of 50 y in men and women exposed to famine prenatally. *Am J Clin Nutr*. 1999;70:811–6.
- Liu L, Pang ZC, Sun JP, Xue B, Wang SJ, Ning F, et al. Exposure to famine in early life and the risk of obesity in adulthood in Qingdao: evidence from the 1959–1961 Chinese famine. *Nutr Metab Cardiovasc Dis*. 2017;27:154–60.
- Maslova E, Rytter D, Bech BH, Henriksen TB, Rasmussen MA, Olsen SF, et al. Maternal protein intake during pregnancy and offspring overweight 20 y later. *Am J Clin Nutr*. 2014;100:1139–48.
- Chen L-W, Aris I, Bernard J, Tint M-T, Chia A, Colega M, et al. Associations of maternal dietary patterns during pregnancy with offspring adiposity from birth until 54 months of age. *Nutrients*. 2016;9:2.
- Chen L-W, Aris IM, Bernard JY, Tint MT, Colega M, Gluckman PD, et al. Associations of maternal macronutrient intake during pregnancy with infant BMI peak characteristics and childhood BMI. *Am J Clin Nutr*. 2017;105:705–13.
- Meng R, Lv J, Yu C, Guo Y, Bian Z, Yang L, et al. Prenatal famine exposure, adulthood obesity patterns and risk of type 2 diabetes. *Int J Epidemiol*. 2018;47:399–408.
- Perrig W, Oken E, Dabelea D. Developmental overnutrition and obesity and type 2 diabetes in offspring. *Diabetologia*. 2019;62:1779–88.
- Kant AK. Indexes of overall diet quality: a review. *J Am Diet Assoc*. 1996;96:785–91.
- Cespedes EM, Hu FB. Dietary patterns: from nutritional epidemiologic analysis to national guidelines. *Am J Clin Nutr*. 2015;101:899–900.
- Gaillard R, Rifas-Shiman SL, Perrig W, Oken E, Gillman MW. Maternal inflammation during pregnancy and childhood adiposity. *Obesity (Silver Spring)*. 2016;24(6):1320–7. <https://doi.org/10.1002/oby.21484>. Epub 2016 Apr 20.
- Sen S, Simmons RA. Maternal antioxidant supplementation prevents adiposity in the offspring of Western diet-fed rats. *Diabetes*. 2010;59:3058–65.
- Minihane AM, Vinoy S, Russell WR, Baka A, Roche HM, Tuohy KM, et al. Low-grade inflammation, diet composition and health: current research evidence and its translation. *Br J Nutr*. 2015;114:999–1012.
- Phillips CM, Chen L-W, Heude B, Bernard JY, Harvey NC, Duijts L, et al. Dietary inflammatory index and non-communicable disease risk: a narrative review. *Nutrients*. 2019;11:1873.
- Hébert JR, Shivappa N, Wirth MD, Hussey JR, Hurley TG. Perspective: the dietary inflammatory index (DII)-lessons learned, improvements made, and future directions. *Adv Nutr*. 2019;10:185–95.
- Chatzi L, Rifas-Shiman SL, Georgiou V, Joung KE, Koinaki S, Chalkiadaki G, et al. Adherence to the Mediterranean diet during pregnancy and offspring adiposity and cardiometabolic traits in childhood. *Pediatr Obes*. 2017;12:47–56.
- Tahir MJ, Haapala JL, Foster LP, Duncan KM, Teague AM, Kharbada EO, McGovern PM, Whitaker KM, Rasmussen KM, Fields DA, Jacobs DR Jr, Harnack LJ, Demerath EW. Higher Maternal Diet Quality during Pregnancy and Lactation Is Associated with Lower Infant Weight-For-Length, Body Fat Percent, and Fat Mass in Early Postnatal Life. *Nutrients*. 2019;11(3):632. <https://doi.org/10.3390/nu11030632>.
- Sen S, Rifas-Shiman SL, Shivappa N, Wirth MD, Hebert JR, Gold DR, et al. Associations of prenatal and early life dietary inflammatory potential with childhood adiposity and cardiometabolic risk in Project Viva. *Pediatr Obes*. 2018;13:292–300.
- Moore BF, Sauder KA, Starling AP, Hébert JR, Shivappa N, Ringham BM, et al. Proinflammatory diets during pregnancy and neonatal adiposity in the healthy start study. *J Pediatr*. 2018;195:121–127.e2.
- Crozier SR, Robinson SM, Godfrey KM, Cooper C, Inskip HM. Women's dietary patterns change little from before to during pregnancy. *J Nutr*. 2009;139:1956–63.
- Toro-Ramos T, Paley C, Pi-Sunyer FX, Gallagher D. Body composition during fetal development and infancy through the age of 5 years. *Eur J Clin Nutr*. 2015;69:1279–89.
- Stephenson J, Heslehurst N, Hall J, Schoenaker DAJM, Hutchinson J, Cade JE, et al. Before the beginning: nutrition and lifestyle in the preconception period and its importance for future health. *Lancet*. 2018;391:1830–41.
- Jaddoe VVW, Mackenbach JP, Moll HA, Steegers EAP, Tiemeier H, Verhulst FC, et al. The Generation R Study: design and cohort profile. *Eur J Epidemiol*. 2006;21:475–84.
- Polańska K, Hanke W, Król A, Potocka A, Waszkowska M, Jacukowicz A, et al. Polish mother and child cohort study (REPRO-PI) - methodology of the follow-up of the children at the age of 7. *Int J Occup Med Environ Health*. 2016;29:883–93.
- Heude B, Forhan A, Slama R, Douhaud L, Bedel S, Saurel-Cubizolles M-J, et al. Cohort profile: the EDEN mother-child cohort on the prenatal and early postnatal determinants of child health and development. *Int J Epidemiol*. 2016;45:353–63.
- O'Mahony D, Fallon UB, Hannon F, Kloeckner K, Avalos G, Murphy AW, Kelleher CC; Lifeways Cross Generation Cohort Study Steering Group. The Lifeways Cross-Generation Study: design, recruitment and data management considerations. *Ir Med J*. 2007;100(8):suppl 3–6.
- Fraser A, Macdonald-Wallis C, Tilling K, Boyd A, Golding J, Davey Smith G, et al. Cohort profile: the Avon longitudinal study of parents and children: ALSPAC mothers cohort. *Int J Epidemiol*. 2013;42:97–110.
- Inskip HM, Godfrey KM, Robinson SM, Law CM, Barker DJP, Cooper C, et al. Cohort profile: the Southampton Women's survey. *Int J Epidemiol*. 2005;35:42–8.
- Walsh JM, McGowan CA, Mahony R, Foley ME, McAuliffe FM. Low glycaemic index diet in pregnancy to prevent macrosomia (ROLO study): randomised control trial. *BMJ*. 2012;345:e5605.
- Kooijman MN, Kruithof CJ, van Duijn CM, Duijts L, Franco OH, van IJzendoorn MH, et al. The Generation R Study: design and cohort update 2017. *Eur J Epidemiol*. 2016;31:1243–64.
- Boyd A, Golding J, Macleod J, Lawlor DA, Fraser A, Henderson J, et al. Cohort profile: the 'children of the 90s'-the index offspring of the Avon longitudinal study of parents and children. *Int J Epidemiol*. 2013;42:111–27.
- Aubert AM, Forhan A, de Lauzon-Guillain B, Chen L-W, Polanska K, Hanke W, et al. Deriving the Dietary Approaches to Stop Hypertension (DASH) score in women from seven pregnancy cohorts from the European ALPHABET consortium. *Nutrients*. 2019;11:2706.
- Deschamps V, de Lauzon-Guillain B, Lafay L, Borys J-M, Charles MA, Romon M. Reproducibility and relative validity of a food-frequency questionnaire among French adults and adolescents. *Eur J Clin Nutr*. 2007;63:282–91.



38. Klipstein-Grobusch K, den Breeijen JH, Goldbohm RA, Geleijnse JM, Hofman A, Grobbee DE, et al. Dietary assessment in the elderly: validation of a semiquantitative food frequency questionnaire. *Eur J Clin Nutr.* 1998;52:588–96.
39. Murrin C, Shrivastava A, Kelleher CC. Maternal macronutrient intake during pregnancy and 5 years postpartum and associations with child weight status aged five. *Eur J Clin Nutr.* 2013;67:670–9.
40. Harrington J. Validation of a Food Frequency Questionnaire as a tool for assessing nutrient intake (MA thesis). Galway: National University of Ireland Galway; 1997.
41. Horan MK, McGowan CA, Doyle O, McAuliffe FM. Well-being in pregnancy: an examination of the effect of socioeconomic, dietary and lifestyle factors including impact of a low glycaemic index dietary intervention. *Eur J Clin Nutr.* 2013;68:19–24.
42. Rogers I, Emmett P. Diet during pregnancy in a population of pregnant women in South West England. *Eur J Clin Nutr.* 1998;52:246–50.
43. Wesolowska E, Jankowska A, Trafalska E, Kałużny P, Grzesiak M, Dominowska J, Hanke W, Calamandrei G, Polańska K. Sociodemographic, Lifestyle, Environmental and Pregnancy-Related Determinants of Dietary Patterns during Pregnancy. *Int J Environ Res Public Health.* 2019;16(5):754. <https://doi.org/10.3390/ijerph16050754>.
44. Robinson S, Godfrey K, Osmond C, Cox V, Barker D. Evaluation of a food frequency questionnaire used to assess nutrient intakes in pregnant women. *Eur J Clin Nutr.* 1996;50:302–8.
45. Voortman T, Steegers-Theunissen RPM, Bergen NE, Jaddoe VVW, Looman CWN, Kiefte-de Jong JC, et al. Validation of a semi-quantitative food-frequency questionnaire for Dutch pregnant women from the general population using the method of triads. *Nutrients.* 2020;12:1341.
46. Shivappa N, Steck SE, Hurley TG, Hussey JR, Hébert JR. Designing and developing a literature-derived, population-based dietary inflammatory index. *Public Health Nutr.* 2014;17:1689–96.
47. Fung TT, Chiuve SE, McCullough ML, Rexrode KM, Logroscino G, Hu FB. Adherence to a DASH-style diet and risk of coronary heart disease and stroke in women. *Arch Intern Med.* 2008;168:713.
48. Miller PE, Cross AJ, Subar AF, Krebs-Smith SM, Park Y, Powell-Wiley T, et al. Comparison of 4 established DASH diet indexes: examining associations of index scores and colorectal cancer. *Am J Clin Nutr.* 2013;98:794–803.
49. Barlow SE; Expert Committee. Expert committee recommendations regarding the prevention, assessment, and treatment of child and adolescent overweight and obesity: summary report. *Pediatrics.* 2007;120 Suppl 4:S164–92. <https://doi.org/10.1542/peds.2007-2329C>.
50. WHO Multicentre Growth Reference Study Group. WHO Child Growth Standards based on length/height, weight and age. *Acta Paediatr Suppl.* 2006;450:76–85.
51. de Onis M, Onyango AW, Borghi E, Siyam A, Nishida C, Siekmann J. Development of a WHO growth reference for school-aged children and adolescents. *Bull World Health Organ.* 2007;85:660–7.
52. Fishbein DH, Michael L, Guthrie C, Carr C, Raymer J. Associations Between Environmental Conditions and Executive Cognitive Functioning and Behavior During Late Childhood: A Pilot Study. *Front Psychol.* 2019;10:1263. <https://doi.org/10.3389/fpsyg.2019.01263>.
53. Duong J, Bradshaw CP. Links between contexts and middle to late childhood social-emotional development. *Am J Community Psychol.* 2017;60:538–54.
54. Tobias DK, Hu FB, Chavarro J, Rosner B, Mozaffarian D, Zhang C. Healthful dietary patterns and type 2 diabetes mellitus risk among women with a history of gestational diabetes mellitus. *Arch Intern Med.* 2012;172:1566–72.
55. Qiu C, Zhang C, Gelaye B, Enquobahrie DA, Frederick IO, Williams MA. Gestational diabetes mellitus in relation to maternal dietary heme iron and nonheme iron intake. *Diabetes Care.* 2011;34:1564–9.
56. Higgins JPT, Thompson SG, Deeks JJ, Altman DG. Measuring inconsistency in meta-analyses. *BMJ.* 2003;327:557–60.
57. Higgins JPT, Thompson SG. Quantifying heterogeneity in a meta-analysis. *Stat Med.* 2002;21:1539–58.
58. Chen L-W, Aubert AM, Shivappa N, Bernard JY, Mensink-bout SM, Geraghty AA, et al. Associations of maternal dietary inflammatory potential and quality with offspring birth outcomes: An individual participant data pooled analysis of 7 European cohorts in the ALPHABET consortium. *PLoS Med.* 2021;In press.
59. Khan S, Wirth M, Ortaglia A, Alvarado C, Shivappa N, Hurley T, et al. Design, Development and Construct Validation of the Children's Dietary Inflammatory Index. *Nutrients.* 2018;10:993.
60. Holt EM, Steffen LM, Moran A, Basu S, Steinberger J, Ross JA, et al. Fruit and vegetable consumption and its relation to markers of inflammation and oxidative stress in adolescents. *J Am Diet Assoc.* 2009;109:414–21.
61. Giugliano D, Ceriello A, Esposito K. The effects of diet on inflammation: emphasis on the metabolic syndrome. *J Am Coll Cardiol.* 2006;48:677–85.
62. Heijmans BT, Tobi EW, Stein AD, Putter H, Blauw GJ, Susser ES, et al. Persistent epigenetic differences associated with prenatal exposure to famine in humans. *Proc Natl Acad Sci U S A.* 2008;105:17046–9.
63. Gonzalez-Nahm S, Mendez M, Robinson W, Murphy SK, Hoyo C, Hogan V, Rowley D. Low maternal adherence to a Mediterranean diet is associated with increase in methylation at the MEG3-IG differentially methylated region in female infants. *Environ Epigenet.* 2017;3(2):dxw007. <https://doi.org/10.1093/eep/dxw007>.
64. Godfrey KM, Sheppard A, Gluckman PD, Lillycrop KA, Burdick GC, McLean C, et al. Epigenetic gene promoter methylation at birth is associated with child's later adiposity. *Diabetes.* 2011;60:1528–34.
65. Geraghty A, Sexton-Oates A, O'Brien E, Alberdi G, Fransquet P, Saffery R, et al. A low glycaemic index diet in pregnancy induces DNA methylation variation in blood of newborns: results from the ROLO randomised controlled trial. *Nutrients.* 2018;10:455.
66. Baum D, Beck RQ, Hammer LD, Brasel JA, Greenwood MR. Adipose tissue thymidine kinase activity in man. *Pediatr Res.* 1986;20:118–21.
67. Slater-Jefferies JL, Lillycrop KA, Townsend PA, Torrens C, Hoile SP, Hanson MA, et al. Feeding a protein-restricted diet during pregnancy induces altered epigenetic regulation of peroxisomal proliferator-activated receptor- $\alpha$  in the heart of the offspring. *J Dev Orig Health Dis.* 2011;2:250–5.
68. Roland-Cachera MF, Deheeger M, Maillot M, Bellisle F. Early adiposity rebound: causes and consequences for obesity in children and adults. *Int J Obes.* 2006;30: S11–7.
69. Wells JCK. Toward body composition reference data for infants, children, and adolescents. *Adv Nutr.* 2014;5:320S–9S.
70. Javed A, Jumean M, Murad MH, Okorodudu D, Kumar S, Somers VK, et al. Diagnostic performance of body mass index to identify obesity as defined by body adiposity in children and adolescents: a systematic review and meta-analysis. *Pediatr Obes.* 2015;10:234–44.
71. Malone SK, Zemel BS. Measurement and interpretation of body mass index during childhood and adolescence. *J Sch Nurs.* 2015;31:261–71.
72. Freedman DS, Wang J, Maynard LM, Thornton JC, Mei Z, Pierson RN, et al. Relation of BMI to fat and fat-free mass among children and adolescents. *Int J Obes.* 2005;29:1–8.
73. Burrows R, Correa-Burrows P, Reyes M, Blanco E, Albala C, Gahagan S. Low muscle mass is associated with cardiometabolic risk regardless of nutritional status in adolescents: a cross-sectional study in a Chilean birth cohort. *Pediatr Diabetes.* 2017;18:895–902.
74. Steene-Johannessen J, Anderssen SA, Kollé E, Andersen LB. Low muscle fitness is associated with metabolic risk in youth. *Med Sci Sports Exerc.* 2009;41:1361–7.
75. Tobi EW, Lumey LH, Talens RP, Kremer D, Putter H, Stein AD, et al. DNA methylation differences after exposure to prenatal famine are common and timing- and sex-specific. *Hum Mol Genet.* 2009;18:4046–53.
76. Murphy SK, Adigun A, Huang Z, Overcash F, Wang F, Jirtle RL, et al. Gender-specific methylation differences in relation to prenatal exposure to cigarette smoke. *Gene.* 2012;494:36–43.
77. Andres A, Hull HR, Shankar K, Casey PH, Cleves MA, Badger TM. Longitudinal body composition of children born to mothers with normal weight, overweight, and obesity. *Obesity.* 2015;23:1252–8.
78. Chen L-W, Tint M-T, Fortier MV, Aris IM, Bernard JY, Colega M, et al. Maternal macronutrient intake during pregnancy is associated with neonatal abdominal adiposity: The Growing Up in Singapore Towards healthy Outcomes (GUSTO) study. *J Nutr.* 2016;146:1571–9.
79. Donnelly JM, Lindsay K, Walsh JM, Horan MK, O'Shea D, Molloy EJ, McAuliffe FM. Perinatal inflammation and childhood adiposity - a gender effect? *J Matern Fetal Neonatal Med.* 2020;33(7):1203–10. <https://doi.org/10.1080/14767058.2018.1517315>. Epub 2018 Sep 27.
80. Veldhuis JD, Roemmich JN, Richmond EJ, Rogol AD, Lovejoy JC, Sheffield-Moore M, et al. Endocrine control of body composition in infancy, childhood, and puberty. *Endocr Rev.* 2005;26:114–46.
81. Uljaszek SJ, Kerr DA. Anthropometric measurement error and the assessment of nutritional status. *Br J Nutr.* 1999;82:165–77.

## Publisher's Note

Springer Nature remains neutral with regard to jurisdictional claims in published maps and institutional affiliations.