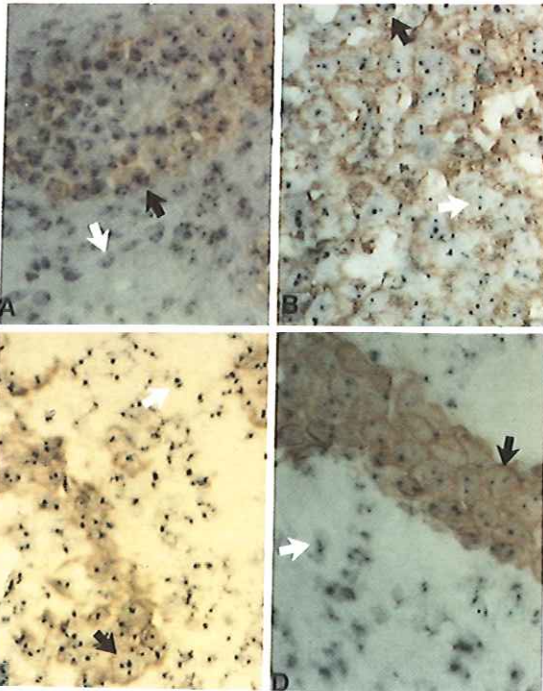


Chapter II. Figure 2.
In situ hybridization of pa12H8 under high-stringency conditions (Devilee et al., 1988b) to a metaphase spread of a healthy donor. Arrows indicate resulting hybridization sites as detected by avidin-fluorescein isothiocyanate (FITC) treatment and propidium iodide counterstaining.



Chapter III. Figure 2.
 Simultaneous immunohistochemical detection of placental like alkaline phosphatase expression and nonradioactive *in situ* hybridization with a chromosome 12 specific centromeric probe pa12H8 on a frozen 20 μ m tissue section of case CIS-SE 3 (Table 2), illustrating a seminiferous tubule containing normal spermatogenesis (A) and CIS (B). Note numbers of signals/nucleus in the cells of spermatogenic lineage (1 or 2) and those in CIS (1, 2, 3 or 4).

Chapter IV. Figure 1.
 Representative illustrations of the numerical distribution analysis of centromeric regions of chromosomes 15 in different components of combined testicular germ cell tumors; (A) seminiferous tubules containing carcinoma *in situ*, (B) seminoma, both stained for placental like alkaline phosphatase, and (C) embryonal carcinoma, (D) teratoma, both stained for cytokeratins.

Financial support for the printing of this thesis was provided by the Dutch Cancer Society (Nederlandse Kankerbestrijding); Erasmus University, Rotterdam; Becton Dickinson Image Cytometry Systems B.V., Leiden; Greiner B.V., Alphen aan de Rijn, and I.K.S. B.V., Leerdam.