

Cardiac magnetic resonance in cocaine-induced myocardial damage

Teresa Arcadi · Massimo Bolognesi ·
Erica Maffei · Filippo Cademartiri

Received: 14 January 2014 / Accepted: 21 January 2014 / Published online: 31 January 2014
© Springer Science+Business Media Dordrecht 2014

Abstract A 54-year-old male with history of cocaine abuse underwent trans-thoracic echocardiography that showed hyper-echogenicity of the basal segments of the septum and infero-lateral wall of the left ventricle. The patient underwent cardiac CT that reported diffuse non-obstructive CAD. Cardiac MR showed LGE patterns consistent with non-ischemic myocardial damage associated with cocaine abuse.

Keywords Cocaine abuse · Myocardial fibrosis · Echocardiography · Cardiac computed tomography · Cardiac magnetic resonance

A 54-year-old male with family history of ischemic heart disease, psychosis, type 2 diabetes mellitus, bicuspid aortic valve and ascending aortic dilatation was admitted to our

outpatient clinic. Five years earlier the patient was admitted to the psychiatric service for a delusional disorder substance abuse (cocaine). For over 5 years he was treated for diabetes and high blood pressure medications.

Trans-thoracic echocardiography showed no wall-motion abnormalities with normal global LV function; no ECG/biomarker abnormalities, arrhythmias (24-h Holter monitoring), angina, inducible ischemia (stress ECG) were observed.

During the latest echocardiographic examination he showed mild aortic valve steno-insufficiency and a slight increase of ascending aorta dilatation (45 mm); the investigation demonstrated left ventricular hypertrophy with intra-myocardial patches of hyper-echogenicity in the basal segment of the septum and inferior-lateral wall (Fig. 1a, arrow; movie 1). The patient underwent cardiac CT which showed three-vessel non obstructive coronary artery disease and confirmed the LV hypertrophy (15 mm at septal basal segment; Fig. 1b, arrow) and the dilation of ascending aorta (44 mm).

Cardiac MR was performed for the assessment of LV tissue (Fig. 1c–e). No significant wall-motion or signal abnormalities were detected at pre-contrast T1/T2 weighted images in the left ventricle. Mild aortic valve regurgitation was observed (6 %) with normal LV ejection fraction (55 %) and end-diastolic volume (80 ml/m²). CMR showed the presence of subtle intra-myocardial areas of early (Fig. 1c, arrowheads; Movie 2) and late Gadolinium Enhancement at the level of mid-basal septum (Fig. 1d, e, arrowheads) and infero-lateral mid-basal wall of the left ventricle (Fig. 1d, e, arrow). Given the non-ischemic pattern of LGE location and distribution, the absence of typical patterns associated to LV hypertrophy and the lack of hypertrophic/dilated cardiomyopathy features, the finding is consistent with chronic fibrosis

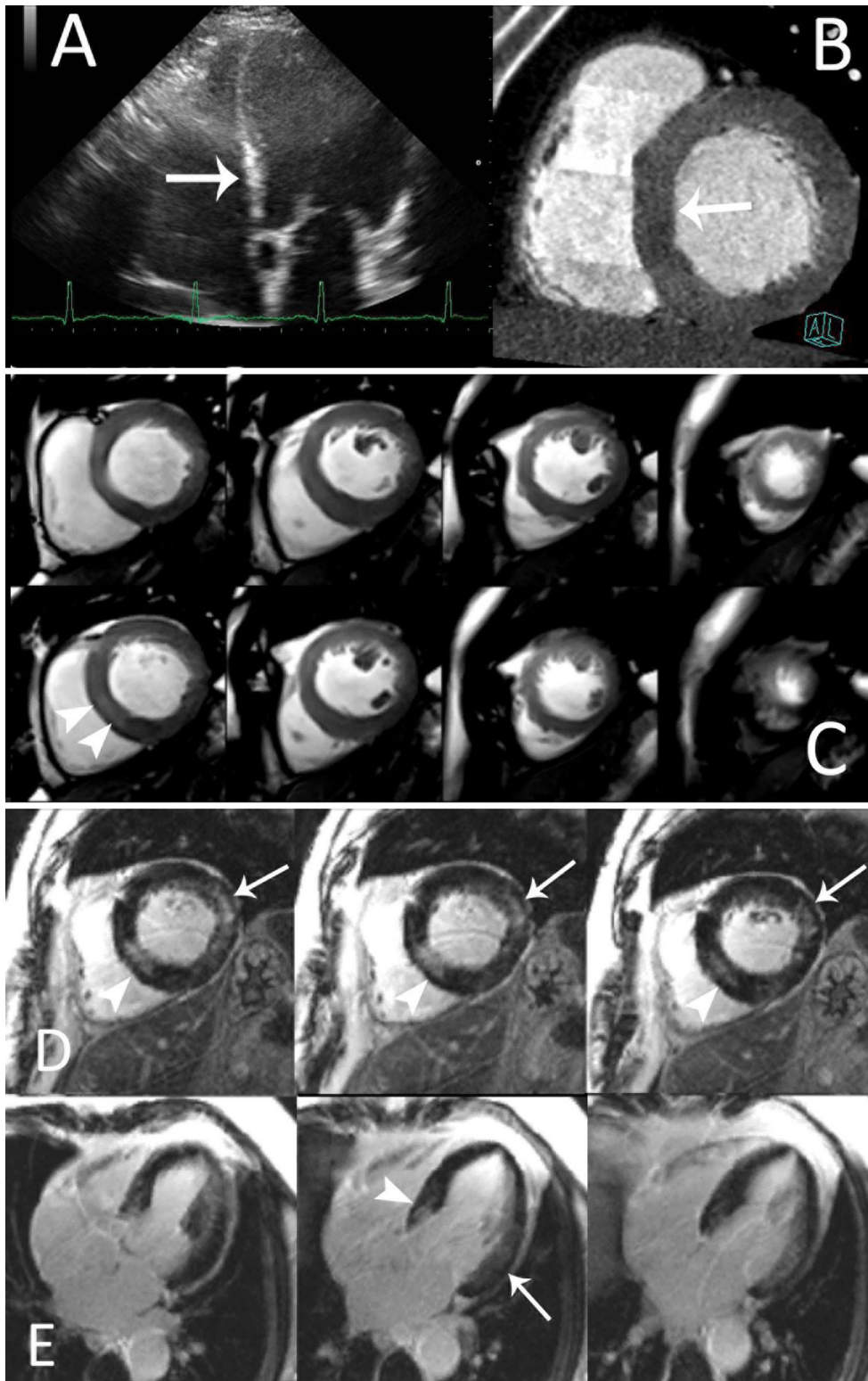
Electronic supplementary material The online version of this article (doi:10.1007/s10554-014-0381-4) contains supplementary material, which is available to authorized users.

T. Arcadi
SDN Foundation, IRCCS, Naples, Italy

M. Bolognesi
Sports Cardiology Medicine Centre, Asl 112 District of Cesena, Cesena, Italy

E. Maffei · F. Cademartiri (✉)
Department of Radiology, Giovanni XXIII Clinic,
Monastier di Treviso, Italy
e-mail: filippocademartiri@gmail.com

F. Cademartiri
Department of Radiology, Erasmus Medical Center, Rotterdam,
The Netherlands



◀ **Fig. 1** Cardiac CT and conventional coronary angiography findings. Multimodality imaging of *left* ventricle. Echocardiography shows the hyper-echogenicity of the mid-basal septum (**a—arrow**) while on first pass CT there is no evidence of tissue damage (**b—arrow**). Cine MR images performed early after Gadolinium administration show a mild hyper-intensity of the basal septum with intramural distribution (**d—arrowheads**). Delayed MR images clearly depict late Gadolinium enhancement at the level of the basal septum (**d, e—arrowheads**) and at the level of the basal lateral wall (**d, e—arrows**) with intramyocardial distribution

associated with cocaine abuse. Echocardiography is useful mean to address this kind of subtle tissue abnormalities and CMR can complete the assessment with a precise pattern definition.

Conflict of interest None.