

## Organization and Strategy of Farmer Specialized Cooperatives in China

Yamei Hu, Zuhui Huang, George Hendrikse and Xuchu Xu

ERIM REPORT SERIES <i>RESEARCH IN MANAGEMENT</i>	
ERIM Report Series reference number	ERS-2005-059-ORG
Publication	October 2005
Number of pages	21
Persistent paper URL	
Email address corresponding author	yhu@rsm.nl ; ghendrikse@rsm.nl
Address	Erasmus Research Institute of Management (ERIM) RSM Erasmus University / Erasmus School of Economics Erasmus Universiteit Rotterdam P.O.Box 1738 3000 DR Rotterdam, The Netherlands Phone: + 31 10 408 1182 Fax: + 31 10 408 9640 Email: <a href="mailto:info@erim.eur.nl">info@erim.eur.nl</a> Internet: <a href="http://www.erim.eur.nl">www.erim.eur.nl</a>

Bibliographic data and classifications of all the ERIM reports are also available on the ERIM website:  
[www.erim.eur.nl](http://www.erim.eur.nl)

# ERASMUS RESEARCH INSTITUTE OF MANAGEMENT

## REPORT SERIES *RESEARCH IN MANAGEMENT*

ABSTRACT AND KEYWORDS	
Abstract	<p>A description and analysis of China's Farmer Specialized Cooperatives is presented. Data is presented regarding the historical development of farmer cooperatives in China, the membership composition of a sample of 66 farmer cooperatives in the Zhejiang province, and the various attributes (governance, quality control system, and strategy) of a watermelon cooperative in this province. Many cooperatives are being transformed in organizations with a market orientation. These cooperatives exhibit substantial heterogeneity, in terms of farmers being member and skewness in the distribution of control rights. Human asset specificity in terms of establishing and maintaining relations and access to markets seems to be more important than physical asset specificity in accounting for governance structure choice in the current institutional setting.</p>
Free Keywords	Farmer Cooperative, China, Governance
Availability	<p>The ERIM Report Series is distributed through the following platforms:</p> <p>Academic Repository at Erasmus University (DEAR), <a href="#">DEAR ERIM Series Portal</a></p> <p>Social Science Research Network (SSRN), <a href="#">SSRN ERIM Series Webpage</a></p> <p>Research Papers in Economics (REPEC), <a href="#">REPEC ERIM Series Webpage</a></p>
Classifications	<p>The electronic versions of the papers in the ERIM report Series contain bibliographic metadata by the following classification systems:</p> <p>Library of Congress Classification, (LCC) <a href="#">LCC Webpage</a></p> <p>Journal of Economic Literature, (JEL), <a href="#">JEL Webpage</a></p> <p>ACM Computing Classification System <a href="#">CCS Webpage</a></p> <p>Inspec Classification scheme (ICS), <a href="#">ICS Webpage</a></p>

# Organization and Strategy of Farmer Specialized Cooperatives in China

Hu, Yamei  
Huang, Zuhui  
Hendrikse, George  
Xu, Xuchu<sup>1</sup>

## Abstract

A description and analysis of China's Farmer Specialized Cooperatives is presented. Data is presented regarding the historical development of farmer cooperatives in China, the membership composition of a sample of 66 farmer cooperatives in the Zhejiang province, and the various attributes (governance, quality control system, and strategy) of a watermelon cooperative in this province. Many cooperatives are being transformed in organizations with a market orientation. These cooperatives exhibit substantial heterogeneity, in terms of farmers being member and skewness in the distribution of control rights. Human asset specificity in terms of establishing and maintaining relations and access to markets seems to be more important than physical asset specificity in accounting for governance structure choice in the current institutional setting.

## Keywords

Farmer Cooperative, China, Governance.

---

<sup>1</sup> Yamei Hu and George Hendrikse are both at Rotterdam School of Management, Erasmus University Rotterdam, [yhu@rsm.nl](mailto:yhu@rsm.nl) and [ghendrikse@rsm.nl](mailto:ghendrikse@rsm.nl). The support of 'Vereniging Trustfonds Erasmus University Rotterdam' in the Netherlands is gratefully acknowledged. Zuhui Huang and Xuchu Xu are both at the Center of Agricultural and Rural Development, Zhejiang University. The support of 'the Foundation of National Social Science of China' is gratefully acknowledged.

## 1 Introduction

The economic organization of agriculture is a timely research topic. Among other organizational forms, cooperatives have always been a prominent organizational form. Broadly defined, a cooperative is an organizational form of many independent growers (horizontal relationship) who jointly own a downstream processor / retailer (vertical relationship). Cooperatives are important to agriculture in developed as well as developing countries. For example, there are 132,000 cooperatives with 83.5 million members and 2.3 million employees in the European Union in 2001, 47,000 cooperatives with 100 million members in the United States of America in 2001, and 94,771 cooperatives with 1,193 million members in China in 2002.

Studying agricultural cooperatives in China is of particular interest for three reasons. First, as noted by the new institutional economists such as North and Williamson for a long time, the *institutional environment* interacts with the governance structure of firms. Menard and Klein (2004, p.750) point out, “These background conditions should not be regarded merely as constraints that hamper modernization. They also create incentives for the discovery of more efficient modes of organization. Comparing firms across different institutional environments to see what settings facilitate organizational innovation and what settings hamper it contributes dramatically to our understanding of the dynamics of a market economy”.

China provides an opportunity to explore the interactions between firms and the institutional environment. The institutional environment in a transition country like China is quite different from those in developed countries such as U.S.A and Western European countries. China’s economy is unique in many aspects. There are more than 200 million farmer households (i.e. a vast population of 0.8 billion farmers), each farming a plot of land that is similar to a garden plot elsewhere. For these small farmers, a major problem in the transitory period is the breakdown of the relationships of the farm with input suppliers and output markets. They face serious constraints in accessing essential inputs, such as feed, fertilizer, seed, capital, and in selling their products. Does the Chinese cultural and institutional background matter for the cooperative as a governance structure?

Second, compared with stock listed corporations, cooperatives have their own salient characteristics such as member-ownership and member-control (Staatz, 1987; Vataliano, 1983; Cook, 1995; Hendrikse and Veerman, 1997; Hendrikse, 1998). However, these characteristics are described and examined mainly against the background of developed economies/agricultural sectors. Are these characteristics also descriptive of agricultural cooperatives in countries in *transition*? Since the late 1980s, new farmer cooperative organizations have emerged and developed rapidly all over China. These new cooperative organizations are quite different from the cooperatives in the 1950s and 1960s. What are the governance structure choices in these cooperative organizations? What are the factors driving such choices?

Third, appropriately organizing the farmers into the agricultural *chain of production*, transaction and consumption will not only benefit farmers but also benefit the overall performance of the economy. As China entered WTO, world industrial markets as well as agricultural markets have been affected by this vast economy. The study on how to organize and position Chinese farmers in agricultural supply chains is meaningful for the health of the Chinese economy as well as the world economy. Are Chinese cooperative organizations a feasible organizational form to the organization of farmers in an increasingly global agri-food supply chain?

The above questions will be addressed in the next sections. The relationship between the various questions and sections can be understood from the levels of institutional analysis distinguished by Williamson (2000). The most general level is Embeddedness, where informal institutions, customs, traditions, norms, and religion are at the center of analysis. Change occurs only once in 100-1000 years. The Institutional Environment is concerned with the formal rules of the game, like bureaucracy, polity, and the judiciary. Change occurs in 10-100 years. Governance is about contracting and aligning governance structures with transactions. Changes occur in a time frame of 1-10 years. Section 2 describes the history of farmer cooperatives in China (2.1), i.e. Institutional Environment, and Chinese society (2.2), i.e. Embeddedness. This provides the background for our study. Section 3 is institutional analysis at the level of Governance. It presents the data regarding 66 farmer cooperatives in Zhejiang province. In section 4, we will enrich the observations of section 3 by describing the interaction between the attributes governance structure, strategy, and quality control system of a specific cooperative. In section 5, we look at these developments from a number of theoretical perspectives and formulate various conclusions. Section 6 concludes.

## **2 Farmer cooperatives in China during the last century**

This section consists of two parts. We start with a brief history regarding cooperatives in China in subsection 2.1. Subsection 2.2 is dedicated to a number of observations regarding Chinese society because it plays a role in understanding farmer cooperatives in China.

### *2.1 One century of cooperatives in China*

Cooperative organizations are not new phenomena in China. Their history dates back to the beginning of the twentieth century. Five periods are distinguished. First, cooperatives emerged in some part of China as early as in 1920s. Cooperatives experienced a rapid increase from 722 in 1928 to 168,864 in 1948 (Du, 299). There is no detailed information regarding farmer cooperatives during this period, but it is clear that they were quite different from what we see today. One main reason is land ownership. Independent farmer households were the conventional farming units in the rural China. Landlords owned 40% of the cultivated rural land, and leased it to farmer households at a very high rent. The rent was often as high as 50% of the value of the crops.

Second, New China was established by the Communist Party coming to power in 1949. The central government gradually confiscated land from landlords and rich farmers, and then distributed it for free to poor and landless farmers. At the same time, to help farmers, who were short of tools and skills, to grow crops efficiently, various kinds of cooperative organizations were set up, motivated and later even directly organized by the government, to pool resources. Among many cooperative forms, ‘the Mutual Aid Team’ was most popular. On the basis of voluntary participation, four or five neighboring households pooled farm tools and draft animals and exchanged labor on a temporary or permanent basis, while land and harvests still belongs to individual households. From 1949 to 1955, the cooperative form of ‘Mutual Aid Team’ was adopted as the primary way to pool resource in order to increase production.

Third, from 1955 to 1979, the so-called ‘Cooperative Movement’ took place, and cooperative organizations were gradually deprived of their voluntary character and became a way for the government to centrally control and manage agricultural production, exchange and consumption. Agricultural production became collectivized. The

‘Elementary Co-operative’ emerged in 1954 and was the main choice of farmers during 1954 to 1956. Compared to the Mutual Aid Team, more households (normally 20 or 30) participated in the Elementary Co-operative, and members pooled their land, besides farm tools and draft animals, together under a unified management. The net income of the co-operative was distributed according to two principles: one payment for the input of land, draft animals, and farm contributed by each member; one payment for the labor input by each member. In this period, the attitude towards the cooperative development was cautious, and farmers were encouraged to participate in different kinds of cooperative organizations on voluntary basis.

Among the various cooperative forms, ‘the Advanced Co-operative’ emerged around 1955, having a number of salient characteristics. All means of production including land were collectively owned, and members worked according to centralized management, and remuneration was solely based on the labor input from each member. In 1955, the central government decided to accelerate the pace of collectivization. As a result, the voluntary participation principle was deliberately omitted and farmers were persuaded or forced to participate in the Advance Co-operative. From 500 Advance Co-operatives in 1955, the number rose toward 753,000 in 1957, covering 119 million households.

In 1958 a new form of cooperative, the so-called ‘People’s Commune’ was introduced and played a decisive role in rural areas until 1978. One ‘People’s Commune’ consisted of about 30 Advanced Cooperatives and consisted of, on average, 5,000 households and 10,000 acres of cultivated land. Unified production, management and distribution were adopted within the People Commune. Initially, payments in the commune was based partly according to subsistence needs and partly according to the work performed. However, delegation of production and management to smaller units, i.e. the ‘Production Team’ which consisted of about 20-30 neighboring households, occurred in 1962. Since then, production teams were the basic producing, operating and accounting unit. Team members grow crops together, and working time was recorded under the title of ‘Working Points’. At the end of year, income was distributed to individual members according to accumulated working points. The system of collective farming remained until 1979.<sup>2</sup>

Under the system of collective farming, supplying of farming inputs, producing and selling products are all centrally planned by governments. The so-called ‘Supplying and Marketing Cooperatives’ in rural areas were government organizations which supplied inputs and consumption goods to farmers. Agricultural products were collected and distributed by governments, and were normally not allowed to trade freely in markets. In general, before 1980s, the ‘Unified Purchasing and Supplying System’ (UPSS, i.e. ‘tong-gou-tong-xiao’ in Chinese) was adopted as the basic institution governing government and farmers regarding producing sales of agricultural products until early 1980s.<sup>3</sup>

Fourth, China started an economic and political transition in 1978. Central planning of economic activities was gradually transformed to a market-oriented system. This ongoing institutional change has far-reaching influences for individuals as well as organizations. Firstly, the collective-based farming has been substituted by family-based farming. The Household Responsibility System (HRS) was initially adopted in 1978 by

---

<sup>2</sup> One point is worth making here. The cooperative organizations in 1960s and 1970s were not farmer-owned and farmer-controlled by nature. They turned into government or quasi-government organizations performing both economic and political functions.

<sup>3</sup> The central government decided to take ‘planned purchasing and planned supplying’ on oil agri-products and grain on November 1953, and expanded the planning spectrum to include cotton on September 1954. The policy issued on August 1955 specified the details.

the farmers in An'hui province and provided the farmers with temporary control and income rights to land. The HRS is characterized by collective ownership of land on the one hand and farmer households as independent producing units on the other hand. The land is collectively owned by villages, while is leased to the households according to the number of people and workers in a household. The tenure specified in the contract was set to be one to three years at first, and then was extended to 15 years. In 2002, the contract duration for a new round was re-extended to 30 years. The contract specifies the household's obligations to fulfill state procurement quotas and to pay various forms of local fees and taxes. The household then retains any residuals in excess of the stated obligations. It induces strong incentives for farmers to work and invest in the leased land. For example, as the reforms spread rapidly across the other parts of the rural areas, farm output rose by more than 30% in six years.

Secondly, the centrally planned agri-food purchasing and supplying system was gradually transformed to a market-oriented system. As the reform on rural land went on, UPSS was progressively abandoned by the government to encourage free trade in agricultural markets. As early as 1982, the government encouraged farmers to sell products in markets. In 1985, the central government decided to cancel UPSS.<sup>4</sup> Since then, the government purchases grain and cotton by contracting, and pork, sea-food, vegetables and other products are open to free trade.

As China transits from centrally-planned economy to market-oriented economy, traditionally small farmers are facing a new situation. Under the old collective producing and distribution system, farmers did not decide what to produce, how much to produce, and how to sell products. In the transitory period, they have to make these decisions by themselves. However, it is not easy to successfully make such decisions. The survival of farmers depends on how, and to what extent, they meet the demands of final consumers. It implies that they have to produce efficiently on the one hand, and to predict and meet market demands on the other hand. However, it is well known that small farmers lack access to inputs, technology, information, and markets. This puts them in a weak position in supply chains. Choosing appropriate strategies, which provide the access to inputs, technology, information, and markets and to added value of supply chain, is therefore crucial to them.

Motivated by the new situation since the 1980s, new cooperative organizations emerged in many provinces of China in the late 1980s. At the beginning, the cooperative organizations, called the 'Technology Association', were established to communicate and promote new technologies among farmers. Local technologists, big specialized growers, and science associations were major players initiating and organizing such cooperative organizations. As the reform of the agricultural product circulation system proceeded in the 1980s, more farmer cooperative organizations emerged. Some cooperative organizations operate across different production stages, such as supplying agricultural inputs and/or selling products. At the same time, more players are involved in establishing cooperative organizations, such as large processing enterprises, state-owned supplying and marketing cooperatives, local rural governments, and villages etc. Since the 1990s, the development of cooperative organizations is speeding up in many provinces. Up to 2004, the number of new cooperative organizations is more than 150,000 (Green book of china's rural economy, 2004, p.157).

The new cooperative organizations that have emerged since the 1980s may take different forms. In general, we can distinguish two basic forms: farmer specialized

---

<sup>4</sup> 'Ten Policies on Further Activate Rural Economy', issued by the Central Committee of the Communist Party and State Council on January 1, 1985, specified the details.

associations and farmer specialized cooperatives. Farmer specialized associations account for 65% and farmer specialized cooperatives account for 35% of the 150,000 cooperative organizations in 2004 (Green book of china's rural economy, 2004, p.157). The main difference between the two forms is the ownership of fixed assets and performing functions like production, marketing, or processing. In general, specialized cooperatives are registered at the Administration of Industry and Commerce, have fixed assets, and are like cooperatives in western countries in terms of their production, marketing, and processing activities. Farmer specialized associations are registered at the Civil Affairs Bureau, have no fixed assets, charge no membership fee, provide some technical assistance, and share information. However, this distinction is too crude. The Farmer Specialized Association' (FSA) is a very broad name, which consists of very large association supplying technology, information, to thousands or tens of thousand members as well as very small associations communicating technology and experience among several farmers. Some specialized associations are even cooperative enterprises and acts just like specialized cooperatives. This overlap can be explained partly by the fact that there are no cooperative laws in China. Up to May 2005, there are no national cooperative laws. At the provincial government level, local laws on cooperatives are also limited. The first local cooperative law was enacted by the Zhejiang provincial government in January 2005.

## *2.2 Chinese society*

Farmers choose a certain organizational form (i.e., a governance structure) to realize a fair return on investment. This choice is not independent of the society in which the farmer lives. It is important to realize that a person is not only a natural or economic person, but also a social person. He (she) lives in a society, which can be viewed as a nexus of various relations. This is particularly true for Chinese farmers with characteristics like community life, influence of traditional culture, and the imperfections of the current market system. There are three basic ways for most of Chinese farmers to participate in the society. The first is kinship, i.e., the relations between an individual and his or her spouse, parents, sisters and brothers, and cousins. The second is social relations, i.e., the relations between an individual and his or her friends, classmates, and colleagues. The third is potential relations, i.e., the relations between an individual and strangers; it is actually based on the first two relations.

The origin and development of farmer cooperatives in China have therefore an informal institutional background based on relations. The kinship (or relation) plays an important role in the cooperatives. First, as an organization based on the rural communities, the farmer cooperative is characterized by kinship. Second, the kinship is an important way for Chinese farmers to access to various resources. It's particularly important at the initial stage of farmer cooperatives. Third, the governance and operation of farmer cooperatives also relies on the principle of kinship. It's a principle combining kin, loyalty and abilities. Therefore, it's natural for the farmer cooperatives to have some characteristics of traditional social relations in the process of their development and operation. Such rural social relations are combined by kinship and market rules. A lot of farmer cooperatives in Zhejiang province find an effective balance in such social relations. The internal transaction costs based on such relations is quite low.

## **3 Farmer cooperatives in the Zhejiang province**



This section presents the data of a sample of 66 farmer cooperatives in Zhejiang province in China. Zhejiang province is located south of Shanghai, with 46 million inhabitants. It was the pilot province for farmer specialized cooperative organizations chosen by the Ministry of Agriculture, China. To a certain extent, the institutional arrangement of farmer cooperatives in Zhejiang not only reflects the common characteristics of farmer cooperatives in the coastal areas of China, but may also represent the development trend of farmer specialized cooperatives in China.

Farmer cooperatives in Zhejiang have experienced a rapid development since 1990s. Like other regions in China, Zhejiang's farmer cooperatives can be divided into specialized cooperatives and specialized associations. Both specialized cooperatives and specialized associations have increased rapidly, however, specialized cooperatives increase at faster rate than specialized associations. The farmer specialized cooperatives increased from 791 in 2002 to 1,789 in 2004. The number of farmer specialized associations was 1,019 in 2004. The total number of the farm households joined in farmer cooperatives reached 554,000 and the total number of the farm households involved in farmer cooperatives reached 2,029,500 in 2004.<sup>5</sup>

A sample of 66 farmer specialized cooperatives was chosen randomly from the Zhejiang province. Data regarding ownership structures were collected. Table 1 shows the number of members, the number of shareholders, the capital stock, the capital stock per-capita, the ratio of shareholders to all members and the shareholding concentration rate<sup>6</sup>.

Co-ops	No of member	No of share-holder	Capital stock (¥)	Per-capita capital stock (¥)	Share-holders to members	R <sub>1</sub>	R <sub>3</sub>	R <sub>5</sub>	R <sub>8</sub>	R <sub>10</sub>
Max value	1000	812	7010000.00	584166.67	1.00	0.82	1.00	1.00	1.00	1.00
Min value	36	2	6800.00	47.22	0.01	0.00	0.01	0.01	0.02	0.02
Mean value	259.318	102.485	365089.00	23001.77	0.45	0.25	0.44	0.55	0.64	0.67
Standard deviation	216.944	144.910	896312.41	75027.32	0.42	0.22	0.29	0.32	0.32	0.32

Table 1: Ownership structure of 66 sample cooperatives

Several observations can be formulated regarding table 1. Firstly, in our sample of 66 farmer cooperatives, the size of cooperatives varies a lot. In terms of membership, the largest cooperative has 1,000 members, while the smallest cooperative has just 26 members. In terms of capital stock, the cooperatives vary from as low as 6,800 yuan to over 7 million yuan. Table 2 provides the additional information regarding the size distribution of cooperatives. The number of cooperatives with more than 500 members and the cooperatives with less than 100 members are limited. Over half of cooperatives have more than 100 and less than 200 members.

No of members	>800	>500	>300	>200	>100	>50	>0
No of co-ops	4	8	20	27	62	65	66
Frequency (%)	6.06	12.12	30.30	40.91	93.94	98.48	100.00

<sup>5</sup> Source: Zhejiang Provincial Department of Agriculture.

<sup>6</sup> Shareholding concentration ( $R_i$ ) refers to the ratio of the sum of the capital stock owned by the top  $i$  member(s) in a descending sort to the total capital stock in a cooperative. In detail,  $R_m = \sum_1^m X_i / \sum_1^n X_i$  ( $m \leq n$ ); Where  $X_i$  refers to the sum of the capital stock owned by the top  $i$  member in a descending sort; where  $N$  refers to the number of cooperative members.

Table 2: Interval distribution of number of members

Secondly, according to table 1, all cooperatives have shareholders. However, the numbers of shareholders of the sample cooperatives varies also drastically. The number of shareholders varies from 2 to 812. Table 3 illustrates the interval distribution of the number of shareholders in our sample. The cooperatives with more than 200 shareholders and these with less than 5 shareholders are fairly limited. 20 cooperatives, almost one third of the sample, have between 100 and 200 shareholders; 26 cooperatives, over one third of the sample, have between 5 and 30 shareholders.

No of shareholders	>200	>100	>50	>30	>10	>5	>0
No of co-ops	9	29	31	34	48	60	66
Frequency (%)	13.64	43.94	46.97	51.52	72.73	90.91	100.00

Table 3: Distribution of the number of shareholders

Thirdly, the capital stock of the cooperatives varies between 7,000 and 7,000,000 yuan; and the per-capita capital stock varies between 50 and 50,000 yuan. Table 4 shows the interval distributions of capital stock and per-capita capital stock. Regarding capital stocks, only two cooperatives held a capital stock of more than 1,000,000 yuan, and the cooperatives with a capital stock of more than 500,000 yuan are limited. For about one third of the cooperatives, their capital stock is between 10,000 and 200,000 yuan. Regarding per-capita stock, about one third of cooperatives have more than 10,000 yuan per-capita capital stock, and about one third of cooperatives have a per-capita capital stock between 1,000 and 5,000 yuan. There is only one cooperative with less than 100 yuan per-capita capital stock, and there are quite a few cooperatives whose per-capita capital stock is between 100 and 1,000 yuan.

Capital stock (10,000 ¥)	>100	>50	>20	>10	>5	>1	>0
No of co-ops	2	8	27	42	54	65	66
Frequency (%)	3.03	12.12	40.91	63.64	81.82	98.48	100.00
Capital stock per-capita (¥)	>10000	>5000	>1000	>500	>200	>100	>0
No of co-ops	21	26	54	60	62	65	66
Frequency (%)	31.82	39.39	81.82	90.91	93.94	98.48	100.00

Table 4: Interval distributions of capital stock and per-capita capital stock

Fourthly, shareholding among members is pervasive. However, member shareholding varies a lot. The rate of shareholders to members is as large as 1 at one extreme and as small as 0.01 at the other extreme, with the mean value being equal to 0.45 (see column 6, table 2). Table 5 further shows the detailed information on members' shareholding. There are strong contrasts on the member shareholding structures in the sample. In 21 cooperatives, the rate of shareholder members to all members is higher than 90%; in 24 cooperatives, this rate is lower than 10%, and in 15 cooperatives, this rate is between 10% and 50%. These cooperatives therefore can be divided into two groups: one group with high member shareholding, and the other group with low member shareholding.

Proportion of shareholder members to all members	>0.9	>0.8	>0.7	>0.6	>0.5	>0.4	>0.3	>0.2	>0.1	>0.0
No of Co-ops	21	23	25	27	27	28	28	36	42	66
Frequency (%)	31.83	34.85	37.88	40.91	40.91	42.42	42.42	54.55	63.64	100

Table 5: Interval distribution of the proportion of shareholder members to all members

Fifthly, shareholding is not uniformly distributed among shareholders, and large shareholders' dominance in the provision of capital is salient. Table 1 shows, on average, the top 5 largest shareholders account for 50% of the provision of capital in a cooperative, and the top 10 largest shareholders contribute for almost two thirds of the capital stock. Table 6 further captures how shareholdings are concentrated in cooperatives. In 11 cooperatives, the largest shareholder provides more than 50% of equity capital; in 25 cooperatives, the top three largest shareholders provide more than 50%; the top 5 largest shareholders provide more than 50% of equity capital in half of the sample cooperatives.

	$R_m > 0.9$	$R_m > 0.8$	$R_m > 0.7$	$R_m > 0.6$	$R_m > 0.5$	$R_m > 0.4$	$R_m > 0.3$	$R_m > 0.2$	$R_m > 0.1$	$R_m > 0.0$
$R_1$	0	1	4	5	11	17	21	26	45	66
$R_3$	5	9	15	20	25	31	39	47	59	66
$R_5$	14	18	24	28	33	40	47	57	59	66
$R_8$	22	26	31	37	40	49	53	58	60	66
$R_{10}$	26	31	35	40	42	51	55	58	62	66

Table 6: Concentration of shareholding

In sum, most cooperatives are small; shareholding is pervasive among most cooperatives; the cooperatives are usually composed of a minority of core members (usually big shareholders) and a majority of common members (usually users or patrons); the cooperatives can be generally divided into two types: one is with a minority of members as its shareholders; the other is with a majority or all members as its shareholders. For most cooperatives, shareholding is quite concentrated; big shareholders play a dominant role in providing capital.

#### 4 Wenling City Yu-heng watermelon cooperative

In this section, we will examine a specific cooperative in the Zhejiang province in order to enrich the observations of the previous section. Wenling City Yu-heng Watermelon Cooperative (we call it Yu-heng watermelon cooperative hereafter) is located in Yuheng town, Wenling city, Zhejiang province.<sup>7</sup> It was initiated in July 2001 by 29 farmers including the present General Director, and was registered as a share-cooperative enterprise by the local Industry and Commerce Administration in February 2002. The main business of the cooperative involves growing and selling watermelons.<sup>8</sup> In 2004, it had 129 members with the fixed capital of 2.96 million Yuan.

Organizations, and therefore cooperatives, can be characterized in many different ways. We adopt the systems of attributes characterization of Holmstrom and Milgrom (1994). Three clusters of attributes are distinguished in describing this cooperative:

<sup>7</sup> Wenling is a city of 780,000 citizens in Zhejiang province, China; Yuheng is a town south of Wenling.

<sup>8</sup> It also sells farming medicines, fertilizer, etc as a side business.

governance structure (4.1), quality control system (4.2), and strategy (4.3). We conclude the section by paying attention to the complementarities between these attributes (4.4).

#### *4.1 Governance structure*

We follow Hansmann (1996) by distinguishing decision and income rights of a governance structure. Decision rights specify who directs the firm's activities, i.e. the allocation of authority. Various decision rights in Yu-heng watermelon cooperative will be described, like membership composition, share contribution requirement, restricted ownership, delivery rights, quasi-individual ownership title, formal versus real authority, and member involvement. Income rights specify who appropriates the net earnings of the enterprise, i.e. delineate incentives.

##### *Decision rights*

Yu-heng watermelon cooperative has 129 members. Most members are watermelon growers and about 20 members are watermelon sellers. The cooperative requires all members to buy shares, where the number of the shares which members have to buy is determined by the planting scale. The larger the planting scale is, the more shares a member has to buy. However, the maximum shareholding for one member is set to be 20%.

Membership is closed in this cooperative. Although the charter stipulates the membership policy as 'free entry and free exit', the practice of membership is different. On the one hand, to become a member, farmer growers have to reach a certain scale of growing watermelons and have to meet a certain technical requirement. The cooperative is very cautious to accept new members. For example, the cooperative will monitor the performance of a potential member for one year before making a final decision. On the other hand, to leave the cooperative, current members are required to submit a written application to the cooperative. The member can get their equity investment back when the application to leave is accepted by the board of directors. However, current members are not allowed to leave when the cooperative is experiencing losses.

Delivery rights are restricted in Yu-heng Watermelon Cooperative. Firstly, delivery rights are restricted in terms of quality requirements. Members have rights to deliver products to the cooperative, but their products must meet ex ante specified quality standards. Sample inspection and internal grading will be used to distinguish high quality products from low quality products. Secondly, delivery rights are restricted in sense that the delivery amount for one member is almost ex ante determined.

Although Yu-heng Watermelon Cooperative is collectively owned by members, each member's claim on the cooperative seems to be clearly defined. Firstly, individual members' ownership is specified in terms of shares. Members are required to buy shares according to their planting capability/expected patronization. Secondly, the cooperative allows the members to participate in decision making according to shareholding structure. The one-member-one-vote principle is substituted by the restricted one-share-one-vote principle. The latter voting rights will motivate members to collect/commute information to participate in management of cooperatives. Thirdly, shares can be redeemed when members quit cooperative. Thus, members can get back his financial stakes in cooperatives. These facts illustrate that the ownership title is not strictly collective. However, the ownership title can not be viewed as individual either. Property rights in the cooperative can not be traded outside the cooperative. When transferring the property rights within the cooperative, it is the board of directors, not the involved members, having the power to decide whether the transaction can be performed. In sum, the

ownership title in the cooperative is a hybrid-form between individual one and collective one. ‘Quasi-individual’ may be a suitable name.

Ownership defines the allocation of formal authority. Figure 1 captures how formal authority is allocated in this cooperative. It resides with the member (representative) assembly. The (representative) assembly provides members with formal channels to revise organizational charters, elect and/or replace board members, determine finance and development plan, determine total share-value, per-share-value and the maximum number of shares purchased by one member, decide issues regarding merger, cooperation, etc. The member assembly will meet once or twice a year. When it is difficult for all members to come all together, members elect the representatives. The representative members constitute the representative assembly. Representative members have a three-year term and could be re-elected for many terms. Members participate in the (representative) member assembly by a restricted ‘one-share-one-vote’ principle. Voting rights are based on ‘one-share-one-vote’, but one member has at most 20 votes. The decision making process in the (representative) member assembly is by a qualified majority. A decision is reached when more than 2/3 of the votes are in favor.

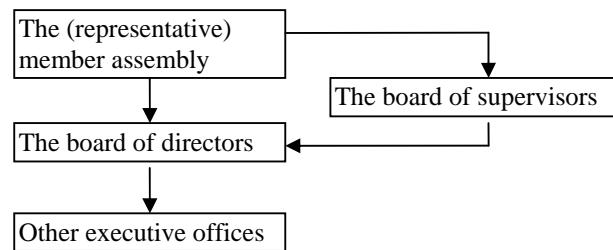


Figure 1 Allocation of Formal Authority

Although formal authority clearly resides with the members and the assembly, real authority may reside with the others. Actually, many decisions have to be delegated to other groups. Normally, these groups include the board of directors and/or a group of managers. In Yu-heng Watermelon Cooperative, the board of directors is having effective control of the cooperative. The board consists of three members, and they are elected by the general assembly. The General Director is elected by the board and is the legal representative of the cooperative.

The board of supervisors is assigned with the rights to monitor the board of directors. The board of supervisors consists of 3 members elected by the (representative) member assembly. The supervisor members have a three-year term and can be re-elected for multiple terms. The supervisor members are expected to be independent from director members, thus, the charter clearly stipulates that the current director members and recently retired members and their relatives can not be supervisor members.

The allocation of real authority may vary widely within one formal organizational arrangement. This issue is illustrated by the outcome of a short questionnaire on the involvement of non-director members in decision making. The results are summarized in table 7.

First, members give up their decision rights regarding inputs and price to director members. The cooperative requires standardization of production by members. What inputs are to be used, and how/when to use them are contracted ex ante between the cooperatives and members. For the cooperative, this is a method to control quality of products; for the members, they like to give up such decision rights to gain technical guidance on how to produce and to acquire inputs such as fertilizers and seeds supplied by the cooperative at production costs. The members give up their decision rights

regarding price because their production scale is small and the inefficiencies in information collection. For member growers, small production scale implies that it is costly to collect market information and it is hard to access markets. In contrast, the cooperatives have better capabilities to gather and analyze market information and a larger scale to gain access to markets.

	No extent or to a very limited extent	To some extent	To large extent
Input decision	×		
Quantity decision			×
Price decision	×		
Quality standards decision			×
Accounting system decision		×	
Advertisement decision			
Technology training decision			×
Investment decision			×
Financing decision		×	
Recruiting decision		×	

Table 7: Allocation of Decision Power to non-Director Members

Second, non-Director members are actively involved in making such decisions as quantity, quality standards, technology training, and investment. Quantity decisions are important for all members, because how much to produce will determine how much to contribute to the cooperative by buying shares. Normal members are motivated enough to participate in this decision. Regarding the high involvement of normal members in setting up quality standards decisions, it reflects that quality is now an important attribute of commodities. Since cooperatives are organized around one or several similar products, formulating quality standards is an important measure to regulate members' behavior and reduce the adverse selection problem.

It is not surprising that members are strongly motivated to take technical training decisions. In China, small farmer growers are lack of technology. As the market condition changes from shortage of supply to abundance of supply, consumers demand high quality products or more customer-friendly products. To meet such changes, new technologies and technological innovations are required. Because small growers are keen on technological training, they are motivated to decide the training projects and training frequency. The result is that providing technology services is one of important measures to test the performance of Chinese cooperatives.

Third, financing decisions are mainly made by director members. This observation is a bit surprising, because normal members are expected to be cautious for financial issues in order to prevent risks and therefore are expected to tightly keep decision rights on financing. The reason is that normal members are too small to take a stake in financing and director members are normally larger growers who contribute a lot to financing issues. For example, the general director is a big grower, and his shares count for 20% of all shares.

In sum, in Yu-heng Watermelon Cooperative, ownership is restricted to members; members are required to buy shares; membership is closed; delivery rights are restricted; the ownership title is quasi-individual; director members have substantial power in deciding prices, inputs, finance, recruiting, etc; non-director members participate actively in making most decisions regarding quantity, quality, standards, investments, and technological training.

### *Income Rights*

The cooperative will allocate the shares among members according to their planting scale, which in turn determine their expected patronization on the cooperative. Since the share allocation is set up before the production of watermelon, the expected patronization and consequently the payment for delivering for individual members are almost fixed. By combining delivery rights and share-holding policy, the cooperative aligns the principle of patronization-based allocation with the principle of share-based allocation. Since member growers are required to purchase shares on the basis of expected patronage, the usage and the capital investment are perfectly aligned.

Members have rights to share the yearly net returns of the cooperative according to shares. Generally, some parts of the share yearly net returns will be retained within the cooperative for further development and public use, and the rest will be allocated to members according to their shares. Yu-heng Watermelon Cooperative does not directly allocate returns to members, because there are sub-units called ‘production bases’. These production bases are not only the units performing production tasks allocated by the cooperative, but also the units of accounting and allocating surplus. For each production base, the surplus to be allocated is the net returns in a production season deducted by the cost of production and management. The cooperative collects the risk insurance fund (10%)<sup>9</sup> and the public accumulation and public benefit fund (5%) from each production base; the rest of the allocable surplus in each production base is allocated to the base members proportional to individuals’ shares. Since the shares are determined ex ante by expected patronage of the cooperative, allocation by shares/capital are perfectly aligned with allocation by patronage. In sum, members share the benefits (or costs) of the cooperative according to shares. The cooperative takes quality considerations into account in its pricing policy. It will pay different prices according to grading. In some cases, members are even punished (fined) to deliver bad products.

#### *Complementarities between decision rights and income rights*

Table 8 presents the values of the attributes of the governance structure in Yu-heng watermelon cooperative. Decision rights are not uniformly distributed among the members. Director members have real control on important issues such as pricing, financing, investment screening, etc. Meanwhile, sharing benefits/costs among members are not solely based on membership. Income rights are confined by share contributions.

<b>Decision rights \ Income rights</b>	Share-based	Membership-based
Uniform		
Skewed	×	

Table 8: Attribute choices in the cluster Governance

In traditional cooperatives, benefit sharing based on patronization is essential for members, and capital returns are not important or deliberately limited to all members. In Yu-heng watermelon cooperative, ownership is allocated in such a way that benefit sharing based on patronization and benefit sharing based on capital contribution is

<sup>9</sup> Note that the risk insurance fund is used for reimbursement for heavy losses caused by the production and marketing of production bases and is allocated to each member’s share account according to shares. For example, in 2003, one production base suffered a great loss from bad weather. The average loss for the members of this base was about 8,000 yuan per mu. The cooperative used the insurance fund to reimburse a part of loss of this production base. After reimbursing, members of this base lost only 2,000 yuan per mu.

perfectly aligned. Since members benefit from the cooperative proportional to their share contribution/expected patronization, a skewed allocation of decision rights encourages members either to contribute to the cooperative or to make knowledge / access to market channels available.

#### 4.2 *Quality control system*

For agricultural products, as well as for other products, quality is an important attribute nowadays. The importance of quality is particularly pronounced for fruits and vegetables because these commodities are among the most likely to be observed and evaluated by consumers in their primary and unprocessed form. However, member growers have more information on quality of products than the cooperatives. Asymmetric information on quality may lead to over-supply of low quality products. Thus, quality management is essential for cooperatives. Markets coordinate quality mainly by incentives (such as prices), and hierarchies coordinate quality mainly by administrative controls (monitoring of the activities). We define the system a cooperative uses to direct behavior of its member users and to motivate them to act in ways that benefit the cooperative as the quality control system.

#### *Quality coordination methods through multiple production stages*

For the agri-business involved in multiple stages of production and distribution of products, vertical coordination on quality is necessary. Various methods could be used to vertically manage quality. We identify three quality coordination methods through multiple production stages in this cooperative: inputs control, production standardization, and unified packaging and marketing. Figure 2 illustrates the production stages involved by the cooperative and coordinating methods through these stages.

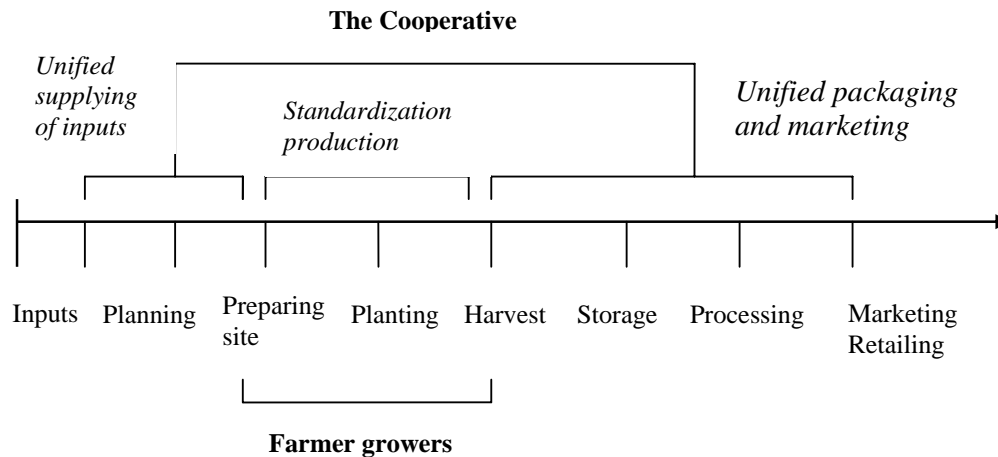


Figure 2 Stages of Production and Coordination methods

Although Yu-heng watermelon cooperative is a marketing cooperative, its activities are not limited to selling. The figure shows the cooperative is involved in multiple stages of inputs, storing, and processing and marketing/retailing. Yu-heng watermelon cooperative purchases inputs for members from outside companies. The procurement of inputs by the cooperative serves two purposes: firstly, quality of inputs is controlled;



secondly, members acquire inputs at cheaper prices because the cooperative has considerable bargaining power towards input suppliers.

Main activities of member growers are preparing sites, planting, and harvesting. The cooperative influences member growers' activities by production standardization requirements. Production methods, technical guidance, and detailed planting descriptions of production procedures are formulated by the cooperative. All members receive a guidance book with detailed standardized growing procedures, specifying detailed requirements regarding seeds, fertilizers, production procedures, and technologies regarding different stages of production. In sum, the cooperative coordinates members' production in multiple stages of production by a unified supply of inputs, standardized production requirements, and unified packaging and marketing.

#### *Other control tools and incentive tools*

In addition to unified supply of inputs, standardized production methods, and unified packaging and marketing, several other control instruments are identified. One control instrument is team based production / inspection. By working together on rural lands, member growers supervise each other. Production and quality management is organized in a three-layer structure. Figure 3 depicts this structure. The board of directors, on behalf of the cooperative, rents rural land each year and assigns members to grow watermelons on it. These lands are called 'production bases'. In 2004, the cooperative had 8 production bases across the Zhejiang province. In 2005, the cooperative has 12 production bases. In each production base, member growers are grouped into 8 to 10 production groups. Each group hires farmer employees. The normal ratio is 1 farmer member to 3 hired farmer workers. These farmer workers are paid 900 yuan per month. Farmer members and workers grow watermelons together in a team. The cooperative provides inputs such as seeds, fertilizers and technical assistance. Farmer members provide technical guidance to farmer employees. At the end of one production cycle<sup>10</sup>, each production base collects watermelons from its production teams. These watermelons are sorted, graded and packed with the cooperative brand. The board of directors determines prices based on the market situation. Subsequently, the cooperative assigns about two seller members to each production base. These seller members are in charge of selling watermelons for their production base.

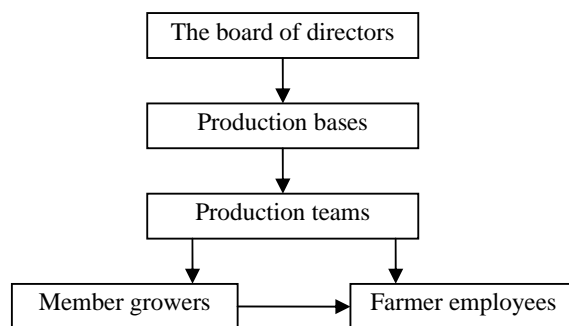


Figure 3: Quality management in Yu-heng watermelon cooperative

Second, the products delivered by members are sorted and graded by the cooperative. By sorting and grading, the cooperative encourages members to adhere to ex ante specified quality standards. Third, members will be paid for their deliveries based on

<sup>10</sup> The number of production cycles is 6, due to its technology and skills. Most enterprises have 4 production cycles.

quality. Sample inspection, internal grading and sorting are used to measure quality differences, and then prices are paid accordingly. Quality-based pricing for deliveries is a salient incentive tool used by the cooperative to align interests of individual members with the entire cooperative.

Fourth, there is cash punishment for failing to deliver quality, even after the internal inspection process. It entails that a customer receives another watermelon when a bad one is returned. This instrument of quality control is explicitly used in the marketing policy for selling fresh watermelons. It is called ‘double paying compensation’. Since the production team of each watermelon can be traced, all team members will be fined with a certain amount of money when losses occur due to delivering bad quality. A larger loss results in a higher cash punishment. This policy increases the incentives for group member’ to monitor each other during production as well as incentives for team supervisors to strictly inspect sorting and grading.

#### *Complementarities in the quality control system*

In Yu-heng watermelon cooperative, the control tools include inputs control (i.e. unified supply of inputs), standardization, unified packaging and marketing, group production/inspection, sorting and grading, and incentive tools like quality-based pricing and cash punishment. The control tools are less efficient when pricing for deliveries is identical across all members. Tight control tools and flexible quality-sensitive pricing act in the same direction to manage members to adhere to quality standards and maintain the brand name. Table 9 depicts the choices regarding the attributes in the cluster quality control at Yu-heng watermelon cooperative. Compared with contract farming, the cooperative has low costs in enforcing quality. For example, field visits are not necessary, because members are motivated to supervise each other to prevent opportunist behavior. Low cost of control, complemented with high-powered incentives in terms of pricing, makes the cooperative efficient in managing quality in various stages of production.

<b>Control \ Quality incentives</b>	Yes	No
Tight	X	
Loose		

Table 9: Attribute choices in the cluster Quality Control

There are ongoing debates on whether incentives and control tools adopted in the quality assurance system are substitutes or complements. Hueth, e.a. (2000) examined incentive tools and control tools used in the contracts used by first handlers of fruits and vegetables in California, and claimed that the instruments of control may be complements or substitutes, depending on the context. If the control instruments and the incentive instruments are complements, then their alignment produces synergies in the Quality control system. This is what we observed in this Chinese fruit cooperative.

#### *4.3 Branding strategy and its enforcement mechanisms*

A cooperative may choose different business strategies when selling products for members. For example, it may just pool all products delivered by members together and sell them by batches at wholesale markets; or, it may sell the products under one or several brand names. We define the branding strategy as the way in which products are marketed and sold under brand name.

The branding strategy determines the degree of commitment to ex ante specified high quality standards by a firm. To make this commitment credible, firms should have something valuable to lose. In Yu-heng watermelon cooperative, this is the private brand ‘Yu-ling’. There are two mechanisms to signal quality to consumers: private brands and public certification (Raynaud, e.a., 2005). The reputation capital of the owner is at stake under a private brand. The general director is a big watermelon grower and at the same time an expert in growing watermelons. Before he joined the cooperative, his watermelons were recognized as high quality. Many local people buy the watermelon from the cooperative because they trust the general director. His personal reputation is at stake in building up the reputation for the ‘Yu-ling’ brand. Under public certification, the credibility of a quality label relies on governmental enforcement.

Since the two mechanisms play similar roles in signaling quality, they may act as substitutes. However, in Yu-heng watermelon cooperative, public certification is not a substitute to private brands. It acts as a major method for building up the reputation of the private brand. The cooperative entered the certification process of the local government, which resulted in ‘Yu-ling’ being certified as ‘Famous Brand in Zhejiang’ by the Zhejiang provincial government agency in 2004. One reason for public certification being a complement to private brands is that the costs of public certification are low. Actually, local governments encourage cooperatives to participate in public certification procedures. Another reason is that public certification is used in advertising in addition to the private brand. The general director stated that the advertisement expenditure on newspapers, television, etc is ‘very limited’, while public certification or public rewards are necessary for promoting brands. Table 10 summarizes the observations regarding the cluster Strategy.

<b>Public certification</b> <b>Private brand</b>	Yes	No
	Yes	No
Yes	X	
No		

Table 10: Attribute choices in the cluster Strategy

#### 4.4 Complementarities between the three clusters of attributes

How to sell products and what products to sell are two questions closely linked with each other. The branding strategy distinguishes itself in terms of creating the commitment to ex ante specified high quality standards and creating a new market niche with higher margins. To guarantee the commitment and to earn high margins, tight quality control is essential in cooperatives taking the brand strategy. The adoption of these systems is facilitated by having centralized / skewed governance. Figure 4 depicts the three clusters of attributes in Yu-heng watermelon cooperative.

In Yu-heng watermelon cooperative, the quality control system is tight in order to maintain high quality reputation/image of the cooperative. It is tight in three ways. Firstly, there are ex-ante contracted quality standards, which are agreed upon by all members and which are stricter than the legal requirements regarding fruits. Secondly, many control tools are adopted to monitor and guide members through different stages of production. For example, input controls, production standardization, and group production/inspection are adopted to guarantee quality before and during the production process. Sample inspection and internal grading are used to measure members’ efforts in meeting quality requirements. Failures of meeting quality requirements, which are not detected by the

internal grading system, are dealt with by cash punishments. Since the bad products can be tracked down to production bases/groups, cash punishment provides a strong incentive to grow high quality watermelons. Thirdly, quality-based pricing is used to complement the control tools.

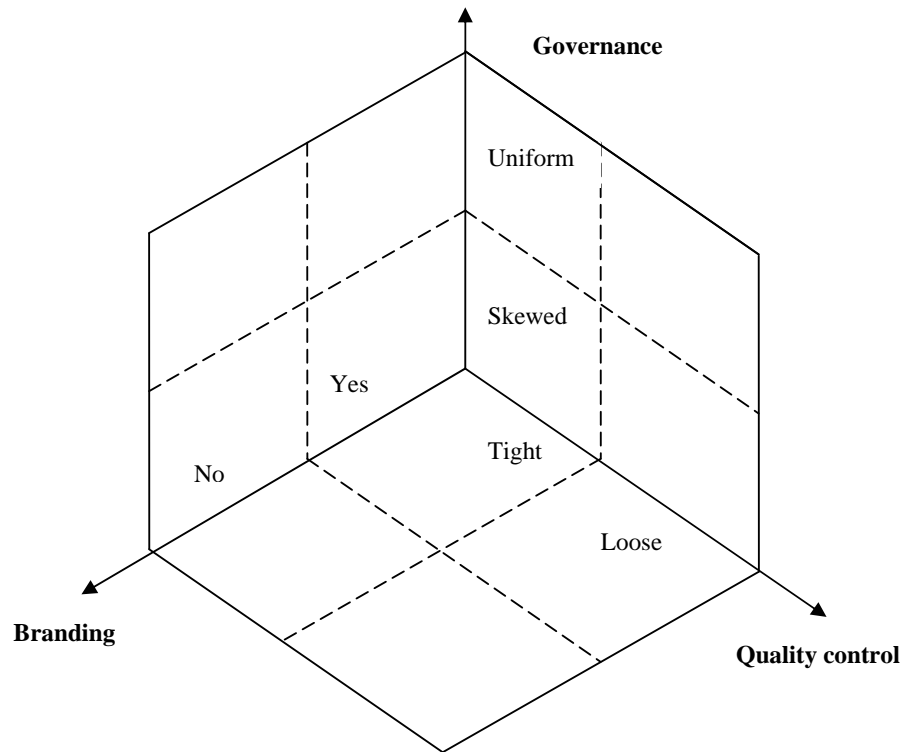


Figure 4: Cluster choices in Yu-heng watermelon cooperative

## 5 Governance in the Institutional Environment of China: abilities and relations

The above sections show that the development of Chinese cooperatives is characterized by two facts. Firstly, the number of new cooperatives increases rapidly all over China. The emergence and spread of new cooperatives in China is in line with the wave of the agricultural industrialization and global competition. For farmers operating in only one stage of the supply chain, i.e. the production stage, their benefits are endangered by the potential appropriation by other players in the supply chain. The cooperative is a safeguard to guarantee farmers' benefits by creating access to markets and produce value-added activities.

In the process of forward integrating into downstream activities, such as wholesaling and/or retailing, physical assets such as preservation facilities and wholesale markets are important. However, human assets such as knowledge/abilities regarding marketing and advanced technology are more important for Chinese farmers. Firstly, the agri-food markets are now characterized by oversupply, i.e. selling products is a problem for most farmers. Access to markets is decisive for farmers' survival. Secondly, in rural China, it is very difficult for farmers to get loans from business organizations such as banks because their scale is small and they may pose substantial risks for creditors. Only farmers with access to knowledge regarding technology and/or markets can get loans. These farmers are able to grow more products and/or sell more products. They distinguish themselves from other farmers by larger planting and/or selling scale. These

signals give banks and other private creditors confidence that their loans will be paid back. So, human assets pave the way to build up physical assets.

Secondly, the governance structure of Chinese farmer cooperatives is a co-governance structure based on abilities and relations. The actual arrangements and operations are mainly based on the abilities of members. Trust and commitment derived from members' relationships sustains these institutional arrangements by confining control rights to core members.

The governance structure of Chinese cooperatives varies substantially. Members are heterogeneous in terms of farm size and supply of equity, and in some cases farmer members jointly own the cooperative with non-farmer members or firm members. The allocation of resources based on capital is pervasive at least in the coastal areas. There is usually a minority of core members (usually big shareholders) and a majority of normal members (usually users or patrons). Normal members enforce control rights by vote, voice and exit on the one hand, and delegate most control rights to core members on the other hand.

Farmers are heterogonous in terms of producing and/or selling capability even when they produce similar products. Farmers are stratified in terms of their abilities in producing products and in accessing markets. Some farmers have these abilities, while most farmers have not. However, farmers are in general in a weak bargaining position with other players in the agri-food supply chain, regardless their abilities to sell products and to perform value-added activities. Uniting farmers and pooling resources in the formation of cooperatives seems to be a suitable strategy for both types of farmers.

According to the incomplete contracting theory, it's efficient to allocate the control rights of cooperatives to the persons with superior access to market channels or having specific skills. In China, these persons are big farmer growers and/or sellers because they have either the abilities or relations to access downstream markets. They are granted substantial power in decision making decision in contingent situations. This is reflected in the skewness of the distribution of decision rights among core members/director members and normal members in the Zhejiang province. If there is a lack of big growers/sellers, agricultural firms and other non-farmers may be chosen and accepted by farmer members. The heterogeneity is much larger in this case, and the extent of the delegation of control rights to such core members is much larger. In some cases, normal members (pure farmer growers) only buy basic shares (i.e. membership shares) to get access to the cooperative, and most control rights are granted to big shareholders/core members. These diverse allocations of decision power among different stakeholders are confined by trust and commitment derived from the relationships among members. For small cooperatives, relationships play an important role in building trust and commitment. If core members have more close relationship with other members, normal members will be more willing to transfer (part of their) control rights to them. Thus, dominance of core members in ownership, and hence in residual control rights, is sustainable on the basis of kinships.

## **6 Conclusions**

Since the late 1980s, China has seen the rapid development of new cooperatives in rural areas. In general, the development of farmer cooperatives in China is still in an early stage. They are small, and most of them are local.

The organization and strategy of farmer specialized cooperatives in China are deeply influenced by the institutional environment. Firstly, human asset specificity in terms of establishing and maintaining relations and access to markets seems to be more important

than physical asset specificity in accounting for governance structure choice in the current institutional setting. The leader of a cooperative is chosen mainly by his ability to access to downstream activities. A non-farmer or process firm can be accepted as a core member as long as he facilitates members' access to knowledge and/or markets. Core members/ director members are endowed with substantial decision power by normal members.

Secondly, farmer cooperatives in China are rooted in the Chinese traditional culture centering on personal relations. Therefore, the origin and development of cooperatives are not only determined by members' abilities but also subject to the informal institutions based on relations. A very effective way to conduct the governance of farmer cooperatives in China may not be formal institution of, and commitment to cooperative concepts, but the personal relations or feelings. In a sense, the network of cooperative members is an effective mechanism to control the core members. In short, both the control of core members based on ability and the constraints caused by members' relations can be regarded as the basic foundation for the co-governance of farmer cooperatives in China.

Heterogeneity of members in farmer cooperatives in China is pervasive. This raises the issue on structuring cooperatives in such a way that they accommodate member heterogeneity best. There are various types of heterogeneity. Firstly, small farmer members and large farmer members co-exist in a cooperative. They are different in terms of abilities and social relations. Secondly, in some cooperatives, there are seller members who are specialized in selling member's products instead of production, and they may have different interests than pure farmer growers. Thirdly, in the cooperatives initiated by processor firms or other agri-food business firms, farmer members as well as non farmer members have decision rights. Fourthly, there are cooperatives with full-time farmer members and part-time farmer having different interests. Finally, members are heterogeneous in terms of education, age, gender of members. The first three types of heterogeneity have been addressed by this article, but more research is needed to advance our knowledge of the impact of member heterogeneity on the organizing and strategy of cooperatives.

## References

- Aghion, P. AND Tirole, J., 1997. Formal versus Real Authority. *Journal of Political Economy*, 105(1), 1-29.
- Allen, D.W. AND Lueck D., 2003. *The Nature of the Farm: contracts, risk and organization in agriculture*. Cambridge, Massachusetts, London: the MIT Press.
- Arrunada, B. AND Gonzalez-Diaz M., AND Fernandez, A., 2004. Determinants of Organizational Form: Transaction Costs and Institutions in the European Trucking Industry. *The Journal of Law, Economics & Organization*, 13(6), 867-882.
- Baker, G. AND Gibbons, R. AND Murphy, K.J., 1999. Informal Authority in Organizations. *The Journal of Law, Economics, & Organization*, 15(1), 56-73.
- Baker, G. AND Gibbons, R. and Murphy, K.J., 2002. Relational Contracts and the Theory of the Firm. *Quarterly Journal of Economics*, 117(1), 39-84.
- Cao, L., 2004, *Evolution of Agricultural Economic Organizations in Transitory China*. Beijing: China Broadcasting and Television Press.
- Cook M.L., The Future of U.S. 1995. Agricultural Cooperatives: A Neo-institutional Approach, *American Journal of Agricultural Economics*, 77, 1153-1159.
- Cook, M.L. AND Iliopoulos, 2004. C. AND F.R. Chaddad, Advances in Cooperative Theory since 1990: A Review of Agricultural Economics Literature, in G.W.J.

- Hendrikse, ed. *Restructuring Agricultural Cooperatives*, Rotterdam: Erasmus University Rotterdam, 65-90.
- Du, Y., 2002. *Cooperatives: Modern Enterprise Institutions in Agriculture*. Nanhang: Jiangxi People Press.
- Hansmann, H., 1996. *The Ownership of Enterprise*. Cambridge, MA: The Belknap Press.
- Hart, O. AND Moore, J., 1990. Property rights and the Nature of the Firm. *Journal of Political Economy*, 98(6), 1119-1158.
- Hendrikse, G.W.J. AND Veerman C.P., 1997. Marketing Cooperatives as a System of Attributes, in J. Nilsson and G. Van Dijk, ed. *Strategies and Structures in the Agro-food Industries*, Van Gorcum.
- Hendrikse, G.W.J., 1998. Screening, Competition and the Choice of Cooperative as an Organizational Form, *Journal of Agricultural Economics*, 49(2), 202-217.
- Hendrikse G.W.J. AND Veerman, C.P., Marketing Co-operatives: An Incomplete Contracting Perspective, *Journal of Agricultural Economics*, 2001a, 52(1), 53-64.
- Hendrikse G.W.J. AND Veerman, C.P., Marketing Cooperatives and Financial Structure: a Transaction Costs Analysis, *Journal of Agricultural Economics*, 2001b, 26, 205-216.
- Hendrikse G.W.J. AND Bijman, W.J.J., 2002a. Ownership Structure in Agrifood Chains: The Marketing Cooperative, *American Journal of Agricultural Economics*, 84(1), 104-119.
- Hendrikse G.W.J. AND Bijman, W.J.J., 2002b. On the Emergence of Grower Associations: Self-Selection versus Market Power, *European Review of Agricultural Economics*, 29(2), 255-269.
- Hendrikse, G.W.J., 2003. *Economics and Management of Organization*, Berkshire: McGraw-Hill.
- Holmstrom, B. AND Milgrom, P., 1994. The Firm as an Incentive System. *American Economic Review*, 84(4), 972-991.
- Hueth, B. AND Ligon, E. AND Wolf, S. e.a, 1999. Incentive Instruments in Fruit and Vegetable Contracts: Input Control, Monitoring, Measuring, and Price Risk, *Review of Agricultural Economics*, 21(2), 374-389.
- Menard, C. AND Klein, P., 2004. Organizational Issues in the Agrifood Sector: toward a Comparative Approach, *American Journal of Agricultural Economics*, 86(3), 746-751.
- Raynaud, E. AND Sauvee, L. AND Valceshini, E., 2005. Alignment between Quality Enforcement Devices and Governance Structures in the Agro-food Vertical Chains. *Journal of Management and Governance*, 7: 1-31.
- Social Social Sciences Academic. 2005. *Green Book of China's Rural Economy: Analysis and Forecast on China's Economy (2004-2005)*, Beijing: Social Sciences Academic Press.
- Staaz, J., 1987. Recent Developments in the Theory of Agricultural Cooperation. *Journal of Agricultural Cooperation*, 2, 74-94.
- Vitaliano, P., 1983. Cooperative Enterprises: An Alternative Conceptual Basis for Analyzing a Complex Institution. *American journal of agricultural economics*, 65(5), 1078-1083.
- Williamson, O.E., 1985. *The Economic Institutions of Capitalism*, New York: Free Press.
- Williamson, O.E., 1991. Comparative Economic Organization: The Analysis of Discrete Structural Alternatives, *Administrative Science Quarterly*, 36, 269-296.
- Williamson, O.E., 2000. The New Institutional Economics: Taking Stock, Looking Ahead. *Journal of Economic Literature*, 38(3), 595-613.
- Windsperger, J., 2004. Centralization of Franchising Networks: Evidence from the Austria Franchise Sector, *Journal of Business Research*, 57, 1361-1369.

## Publications in the ERM Report Series Research\* in Management

### ERM Research Program: "Organizing for Performance"

2005

*Continuous versus Step-Level Public Good Games*

Susanne Abele and Garold Stasser

ERS-2005-015-ORG

<http://hdl.handle.net/1765/1937>

*Collective Consuming: Consumers as Subcontractors on Electronic Markets*

Wilfred Dolfsma

ERS-2005-020-ORG

<http://hdl.handle.net/1765/1932>

*Appropriability in Services*

Wilfred Dolfsma

ERS-2005-021-ORG

<http://hdl.handle.net/1765/1926>

*Is China a Leviathan?*

Ze Zhu

ERS-2005-031-ORG

<http://hdl.handle.net/1765/6551>

*Information Sharing and Cognitive Centrality*

Susanne Abele, Garold Stasser and Sandra I. Vaughan-Parsons

ERS-2005-037-ORG

<http://hdl.handle.net/1765/6664>

*Virtual Enterprises, Mobile Markets and Volatile Customers*

Ferdinand Jaspers, Willem Hulsink and Jules Theeuwes

ERS-2005-039-ORG

<http://hdl.handle.net/1765/6728>

*No Black Box and No Black Hole: from Social Capital to Gift Exchange*

Rene van der Eijk, Wilfred Dolfsma and Albert Jolink

ERS-2005-040-ORG

<http://hdl.handle.net/1765/6665>

*Boards in Agricultural Cooperatives: Competence, Authority, and Incentives*

G.W.J. Hendrikse

ERS-2005-042-ORG

<http://hdl.handle.net/1765/6883>

*The Protestant Work Ethic and Group Performance*

Susanne Abele and Michael Diehl

ERS-2005-053-ORG

<http://hdl.handle.net/1765/6990>

*Organization and Strategy of Farmer Specialized Cooperatives in China*

Yamei Hu, Zuhui Huang, George Hendrikse and Xuchu Xu

ERS-2005-059-ORG

*The Influence of Employee Communication on Strategic Business Alignment*

Cees B. M. van Riel, Guido Berens and Majorie Dijkstra

ERS-2005-060-ORG



*The Tsunami's CSR Effect: MNEs and Philanthropic Responses to the Disaster*  
Gail Whiteman  
ERS-2005-062-ORG

- 
- \* A complete overview of the ERIM Report Series Research in Management:  
<https://ep.eur.nl/handle/1765/1>

ERIM Research Programs:

LIS Business Processes, Logistics and Information Systems

ORG Organizing for Performance

MKT Marketing

F&A Finance and Accounting

STR Strategy and Entrepreneurship