

## Tamoxifen and Risk of Contralateral Breast Cancer for *BRCA1* and *BRCA2* Mutation Carriers

Kelly-Anne Phillips, Roger L. Milne, Matti A. Rookus, Mary B. Daly, Antonis C. Antoniou, Susan Peock, Debra Frost, Douglas F. Easton, Steve Ellis, Michael L. Friedlander, Sandra S. Buys, Nadine Andrieu, Catherine Noguès, Dominique Stoppa-Lyonnet, Valérie Bonadona, Pascal Pujol, Sue Anne McLachlan, Esther M. John, Maartje J. Hoening, Caroline Seynaeve, Rob A.E.M. Tollenaar, David E. Goldgar, Mary Beth Terry, Trinidad Caldes, Prue C. Weideman, Irene L. Andrulis, Christian F. Singer, Kate Birch, Jacques Simard, Melissa C. Southey, Håkan L. Olsson, Anna Jakubowska, Edith Olah, Anne-Marie Gerdes, Lenka Foretova, and John L. Hopper

Author affiliations appear at the end of this article.

Published online ahead of print at [www.jco.org](http://www.jco.org) on August 5, 2013.

Written on behalf of the International *BRCA1*, and *BRCA2* Carrier Cohort Study, the Kathleen Cuninghame Foundation Consortium for Research into Familial Breast Cancer, and the Breast Cancer Family Registry.

K.-A.P. and R.L.M. contributed equally to this work.

Presented in part at the 47th Annual Meeting of the American Society of Clinical Oncology, June 3-7, 2011, Chicago, IL.

The content of this article does not necessarily reflect the views or policies of the National Cancer Institute or any of the collaborating centers in the Breast Cancer Family Registry (BCFR), nor does mention of trade names, commercial products, or organizations imply endorsement by the US Government or the BCFR.

Authors' disclosures of potential conflicts of interest and author contributions are found at the end of this article.

Corresponding author: Kelly-Anne Phillips, MD, Division of Cancer Medicine, Peter MacCallum Cancer Centre, Locked Bag 1, A'Beckett St, Victoria, 8006, Australia; e-mail: [kelly.phillips@petermac.org](mailto:kelly.phillips@petermac.org).

© 2013 by American Society of Clinical Oncology

0732-183X/13/3125w-3091w/\$20.00

DOI: 10.1200/JCO.2012.47.8313

### ABSTRACT

#### Purpose

To determine whether adjuvant tamoxifen treatment for breast cancer (BC) is associated with reduced contralateral breast cancer (CBC) risk for *BRCA1* and/or *BRCA2* mutation carriers.

#### Methods

Analysis of pooled observational cohort data, self-reported at enrollment and at follow-up from the International *BRCA1*, and *BRCA2* Carrier Cohort Study, Kathleen Cuninghame Foundation Consortium for Research into Familial Breast Cancer, and Breast Cancer Family Registry. Eligible women were *BRCA1* and *BRCA2* mutation carriers diagnosed with unilateral BC since 1970 and no other invasive cancer or tamoxifen use before first BC. Hazard ratios (HRs) for CBC associated with tamoxifen use were estimated using Cox regression, adjusting for year and age of diagnosis, country, and bilateral oophorectomy and censoring at contralateral mastectomy, death, or loss to follow-up.

#### Results

Of 1,583 *BRCA1* and 881 *BRCA2* mutation carriers, 383 (24%) and 454 (52%), respectively, took tamoxifen after first BC diagnosis. There were 520 CBCs over 20,104 person-years of observation. The adjusted HR estimates were 0.38 (95% CI, 0.27 to 0.55) and 0.33 (95% CI, 0.22 to 0.50) for *BRCA1* and *BRCA2* mutation carriers, respectively. After left truncating at recruitment to the cohort, adjusted HR estimates were 0.58 (95% CI, 0.29 to 1.13) and 0.48 (95% CI, 0.22 to 1.05) based on 657 *BRCA1* and 426 *BRCA2* mutation carriers with 100 CBCs over 4,392 person-years of prospective follow-up. HRs did not differ by estrogen receptor status of the first BC (missing for 56% of cases).

#### Conclusion

This study provides evidence that tamoxifen use is associated with a reduction in CBC risk for *BRCA1* and *BRCA2* mutation carriers. Further follow-up of these cohorts will provide increased statistical power for future prospective analyses.

*J Clin Oncol* 31:3091-3099. © 2013 by American Society of Clinical Oncology

### INTRODUCTION

Women who carry a mutation in *BRCA1* or *BRCA2* have a high lifetime risk of breast cancer (BC).<sup>1</sup> Bilateral mastectomy and premenopausal bilateral salpingo-oophorectomy (BSO) are associated with a reduced BC risk of greater than 90%<sup>2,3</sup> and approximately 50%, respectively,<sup>4</sup> but are not acceptable interventions for many women.<sup>5,6</sup> Randomized, placebo-controlled primary prevention trials of women who are at increased risk of BC have shown that selective estrogen receptor modulators (SERMs), such as tamoxifen, reduce BC

risk by 40%.<sup>7-11</sup> The preventive effect of tamoxifen is sustained for at least 5 years after cessation of therapy,<sup>11</sup> and the absolute risk of serious adverse effects is low, particularly for premenopausal women.<sup>9,12</sup> For women in the general population, randomized controlled trials have also shown that adjuvant tamoxifen treatment after a first BC diagnosis halves the risk of contralateral breast cancer (CBC).<sup>13</sup> However, it is uncertain whether tamoxifen has any efficacy for women carrying mutations in *BRCA1* or *BRCA2*, and it is not commonly prescribed to carriers<sup>14,15</sup> for the purpose of BC prevention.

Inadequate data regarding efficacy is a major barrier to prescribing SERMS to *BRCA1* and *BRCA2* mutation carriers to prevent BC.<sup>16</sup> Randomized primary prevention trials of mutation carriers are unlikely to be feasible and would take many years to generate reliable conclusions. Prospective observational studies of the efficacy of SERMS for primary prevention of BC would depend on uptake of tamoxifen by mutation carriers and would also take many years. Yet the issue is an important one right now for the tens of thousands of women who currently know that they carry a *BRCA1* or *BRCA2* mutation. Information about the efficacy or otherwise of tamoxifen for the prevention of CBC could assist *BRCA1* and *BRCA2* mutation carriers make decisions about whether to take tamoxifen for primary BC prevention. It might also have implications for the adjuvant treatment of *BRCA1* and *BRCA2* mutation carriers who do not wish to have bilateral mastectomy after an initial diagnosis of a hormone receptor–negative BC.

The aim of this study was to determine whether adjuvant tamoxifen treatment for first BC is associated with a reduction in the risk of CBC for *BRCA1* and/or *BRCA2* mutation carriers and whether the strength of any association differs according to the estrogen receptor (ER) status of the first BC.

## METHODS

### Participants

Participants were female *BRCA1* or *BRCA2* mutation carriers from Europe, Australia, New Zealand, the United States, and Canada, enrolled between September 1, 1993, and December 2, 2009, in three cohort studies; the International *BRCA1* and *BRCA2* Carrier Cohort Study (IBCCS),<sup>17</sup> the Kathleen Cunningham Foundation Consortium for Research into Familial Breast Cancer (kConFab),<sup>18</sup> and the Breast Cancer Family Registry (BCFR).<sup>19</sup> All cohorts include participants recruited through BC family clinics, and the BCFR also includes some population-based recruitment. All participants provided written informed consent, and all studies were approved by the relevant institutional review boards.

A woman was eligible for the current study if she had a pathogenic mutation in *BRCA1* or *BRCA2* and a BC diagnosed since 1970 (when tamoxifen started to be prescribed for early-stage BC) that was not bilateral at the time of diagnosis (defined as within 6 months of first BC diagnosis). Women with a history of other invasive cancers or tamoxifen use before their first BC were excluded.

### Data Collection

Information on family cancer history, demographics, potential risk factors for BC (eg, exogenous hormone use, alcohol intake, and reproductive history), uptake of surgical and medical prevention strategies, and cancer treatment including use of tamoxifen and chemotherapy was self-reported at cohort entry and at follow-up. Cancer outcomes were self-reported and/or collected by linkage with a cancer registry. Each study in each cohort collected this information systematically using similar questionnaires. Frequency of follow-up varied between studies. Pathology data were abstracted from several sources, including diagnostic pathology reports, medical records, and cancer registry records, or through central pathology review.

### Statistical Analysis

Participants were considered to have used tamoxifen if they took it for any period of time after their first BC diagnosis. Hazard ratios (HRs) for CBC associated with tamoxifen use (no, yes) after first BC, excluding use after CBC, were estimated separately for *BRCA1* and *BRCA2* mutation carriers using Cox regression, modeling time from first BC diagnosis to the development of CBC. Analysis time was censored at the date of contralateral mastectomy, death, or last follow-up.

Two main analyses were performed. The first combined retrospective (ie, time before cohort entry) and prospective (ie, time after cohort entry) follow-up. For this analysis, all women were eligible, and follow-up started at date of diagnosis of the first BC. To investigate whether the inclusion of prevalent CBC cases may have introduced bias, a second analysis was performed that applied left truncation of analysis time at the date of cohort entry and therefore considered outcome data from prospective follow-up only. Age and year of diagnosis (both continuous), country of residence (categorical), and BSO (dichotomous, time-varying) were considered as covariates in all multivariable analyses and were included in analyses of retrospective follow-up data. Adjustment for year of diagnosis and BSO made no substantial difference to HR estimates from the analyses of prospective data only; given the smaller number of contralateral events, only age at diagnosis and country of residence were included in the final prospective models. Robust estimates of variance were derived to account for the nonindependence of women from the same family. ER status of the first BC was considered as a covariate and as a stratifying variable in separate multivariable analyses of the combined retrospective and prospective data. Sensitivity analyses were undertaken using the combined and prospective-only data.

These included stratifying by menopausal status at diagnosis of the first BC, adjusting for chemotherapy use (no, yes) and histologic subtype (lobular, nonlobular), adjusting for use of oral contraceptives (no, yes) or hormone replacement therapy after the first BC diagnosis (no, yes), excluding those who took other endocrine therapy (eg, aromatase inhibitors or gonadotropin-releasing hormone agonists) after the first BC, and censoring at the date of the first subsequent ipsilateral breast event or at diagnosis of the first nonbreast primary cancer.

All statistical analyses were conducted using STATA 10 (STATA, College Station, TX). Gene-specific post hoc power calculations were carried out using StatCalc in Epi Info<sup>20</sup> based on the number of participants the observed prevalence of tamoxifen use, and the observed 11% of nonusers who developed contralateral disease during follow-up.

## RESULTS

A total of 3,267 *BRCA1* and *BRCA2* mutation carriers with a personal history of BC were identified from the three cohorts. Of these, 803 were excluded because of first BC diagnosis before 1970 ( $n = 107$ ), CBC occurring within 6 months after the first BC diagnosis ( $n = 115$ ), no follow-up after the first BC diagnosis ( $n = 130$ ), other invasive cancer before first BC diagnosis ( $n = 86$ ), use of tamoxifen before their first BC diagnosis ( $n = 34$ ), and missing information on tamoxifen use or information only available from a relative (proxy;  $n = 331$ ). Thus the final sample of 2,464 women comprised 1,583 *BRCA1* and 881 *BRCA2* mutation carriers, 95.7% of whom were ascertained through BC family clinics and an estimated 96% of whom were of white European origin. Prospective follow-up data (since date of cohort entry) were available for 1,083 women (44%), comprising 657 *BRCA1* and 426 *BRCA2* mutation carriers who had been diagnosed with their first BC a median of 3.9 years before study entry.

Participant characteristics are shown in Table 1. The median time since diagnosis of first BC was 6.6 years, and the median time since cohort entry was 3.2 years. ER status of the first BC was known for 44% of women. Where ER status was known, the first BC was ER negative for 76% of *BRCA1* mutation carriers and ER positive for 77% of *BRCA2* mutation carriers. In total, 24% of *BRCA1* and 52% of *BRCA2* mutation carriers used tamoxifen after their first BC. Overall, 67% of those with an ER-positive first BC used tamoxifen (60% and 71% for *BRCA1* and *BRCA2* mutation carriers, respectively) compared with 17% of those with an ER-negative first BC (15% and 25%, respectively). A total of 581 *BRCA1* mutation carriers (37%) and 289 *BRCA2*

**Table 1. Participant Characteristics**

Characteristic	<i>BRCA1</i> Mutation Carriers (n = 1,583)		<i>BRCA2</i> Mutation Carriers (n = 881)	
	No.	%	No.	%
Data available				
Retrospective only	926	58	455	52
Prospective	657	42	426	48
Follow-up in years				
Since first BC diagnosis				
Median	6.5		6.6	
Interquartile range	3.0-11.8		3.0-11.2	
Since cohort enrollment				
Median	3.4		3.1	
Interquartile range	2.0-6.1		1.6-6.0	
Cohort				
IBCCS	1,063	67	509	58
kConFab	321	20	242	27
BCFR	199	13	130	15
Country of residence				
Australia	286	18	226	26
Austria	65	4	18	2
Canada	47	3	44	5
France	267	17	143	16
Italy	21	1	10	1
New Zealand	21	1	8	1
Poland	50	3	0	
Spain	41	3	48	5
The Netherlands	202	13	31	4
United States of America	181	11	117	13
United Kingdom	297	19	204	23
Other*	105	7	32	4
Year of first BC diagnosis				
1970-1979	97	6	35	4
1980-1989	341	22	157	18
1990-1999	815	51	442	50
≥ 2000	330	21	247	28
Age at first BC diagnosis, years				
<40	801	51	311	35
40-49	527	33	355	40
50-59	200	13	159	18
≥ 60	55	3	56	6
Menopausal status at first BC diagnosis				
Pre/perimenopausal	1,349	85	691	78
Postmenopausal	234	15	190	22
Estrogen receptor status of first BC				
Negative	504	32	100	11
Positive	157	10	331	38
Unknown	922	58	450	51
Took tamoxifen for first BC				
No	1,200	76	427	48
Yes	383	24	454	52
Yes, ER-negative first BC	76	15	25	25
Yes, ER-positive first BC	94	60	234	71
Chemotherapy administered for first BC				
No	233	15	148	17
Yes	717	45	366	42
Unknown	633	40	367	42

(continued in next column)

**Table 1. Participant Characteristics (continued)**

Characteristic	<i>BRCA1</i> Mutation Carriers (n = 1,583)		<i>BRCA2</i> Mutation Carriers (n = 881)	
	No.	%	No.	%
Bilateral oophorectomy				
No	1,002	63	592	67
Yes	581	37	289	33

Abbreviations: BC, breast cancer; BCFR, Breast Cancer Family Registry; ER, estrogen receptor; IBCCS, International *BRCA1*, and *BRCA2* Carrier Cohort Study; kConFab, Kathleen Cuninghame Foundation Consortium for Research into Familial Breast Cancer.  
\*European countries, with the exception of eight *BRCA1* mutation carriers and one *BRCA2* mutation carrier from other countries.

mutation carriers (33%) underwent BSO, either before (n = 64 and 44, respectively) or after (n = 517 and 245, respectively) their first BC.

Several tumor and patient characteristics are associated with risk of CBC,<sup>21,22</sup> although there are only limited data on these associations for *BRCA1* and *BRCA2* mutation carriers.<sup>23-25</sup> Table 2 compares tamoxifen users and nonusers with regard to such characteristics. Tamoxifen users tended to be older at first BC diagnosis ( $P < .001$ ), which was more likely to have been ER positive ( $P < .001$ ) and of lobular histology ( $P = .01$ ). Tamoxifen users were also more likely to have received chemotherapy ( $P = .001$ ) and to have had BSO ( $P < .001$ ).

**Table 2. Characteristics Potentially Associated With Contralateral BC Risk: Tamoxifen Users Versus Nonusers**

Characteristic	Tamoxifen Users		Tamoxifen Nonusers		<i>P</i> *
	No.	%	No.	%	
Mutation type					< .001
<i>BRCA1</i>	383	46	1,200	74	
<i>BRCA2</i>	454	54	427	26	
Age at first BC, years					< .001
Median	43		40		
Interquartile range	37-49		34-47		
Estrogen receptor status of first BC					< .001
Negative	101	24	502	76	
Positive	328	76	160	24	
Unknown	408		965		
Histology of first BC					.01
Lobular	19	3	16	2	
Nonlobular	532	97	1,039	98	
Unknown	286		572		
Chemotherapy administered for first BC					.001
No	105	21	276	29	
Yes	399	79	684	71	
Unknown	333		667		
Bilateral oophorectomy					< .001
No	486	58	1,108	68	
Yes	351	42	519	32	

Abbreviation: BC, breast cancer.  
\*Determined using Fisher's exact test on known values for all characteristics except age, for which the rank-sum test was applied.

**Table 3.** Association Between Tamoxifen Use After First BC and CBC

Variable	No.	Person-Years	CBC		HR	95% CI	P
			No.	%/Person-Year			
<i>BRCA1</i> mutation carriers							
Combined data							
Took tamoxifen for first BC							
No	1,200	9,893	338	3.4	1.00		
Yes	383	3,086	35	1.1	0.38*	0.27 to 0.55	< .001
Prospective data only							
Took tamoxifen for first BC							
No	481	1,989	54	2.7	1.00		
Yes	176	716	12	1.7	0.58†	0.29 to 1.13	.1
<i>BRCA2</i> mutation carriers							
Combined data							
Took tamoxifen for first BC							
No	427	3,762	115	3.1	1.00		
Yes	454	3,364	32	1.0	0.33*	0.22 to 0.50	< .001
Prospective data only							
Took tamoxifen for first BC							
No	191	791	21	2.7	1.00		
Yes	235	896	13	1.5	0.48†	0.22 to 1.05	.07

Abbreviations: BC, breast cancer; CBC, contralateral breast cancer; HR, hazard ratio.

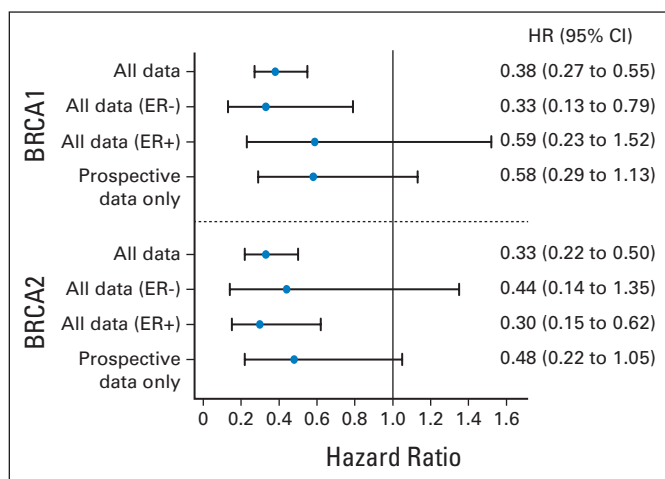
\*Adjusted for age at diagnosis (continuous), year of diagnosis (continuous), bilateral prophylactic oophorectomy (time varying), and country of residence (categorical, as per Table 1).

†Adjusted for age at diagnosis (continuous) and country (categorical: Australia, Canada, France, United States, United Kingdom, other).

CBCs occurred in 520 women (24% of *BRCA1* and 17% of *BRCA2* mutation carriers), and 100 of these occurred after cohort entry. Results from Cox regression analysis assessing an association between tamoxifen use after first BC and risk of CBC are shown in Table 3 and Figure 1. For *BRCA1* mutation carriers, from analysis of the combined retrospective and prospective data, the estimated HR was 0.38 (95% CI, 0.27 to 0.55;  $P < .001$ ). From analysis using only the prospective data, the estimated HR was 0.58 (95% CI, 0.29 to 1.13;  $P = .1$ ). For *BRCA2* mutation carriers, the corresponding HRs were

0.33 (95% CI, 0.22 to 0.50;  $P < .001$ ) and 0.48 (95% CI, 0.22 to 1.05;  $P = .07$ ), respectively. There were no significant differences in the HR estimates between *BRCA1* and *BRCA2* mutation carriers using the combined data ( $P_{\text{heterogeneity}} = .7$ ) or the prospective data only ( $P_{\text{heterogeneity}} = .9$ ), nor were the results different between *BRCA1* and *BRCA2* mutation carriers based on the retrospective data only ( $P_{\text{heterogeneity}} = .7$ ). Analyses of combined data adjusting for, or stratifying on, ER status of the first BC revealed that the observed associations were not accounted for by this tumor characteristic; there was no evidence that the HRs for tamoxifen use differed by ER status ( $P_{\text{heterogeneity}} = .3$  and  $.3$  for *BRCA1* and *BRCA2* mutation carriers, respectively), although the number of ER-positive BCs in *BRCA1* mutation carriers and ER-negative BCs in *BRCA2* mutation carriers was small (Table 4). The results from all sensitivity analyses were similar (Table 5).

For *BRCA1* mutation carriers who were premenopausal at first BC diagnosis, the association of reduced BC risk with tamoxifen was weaker for those who underwent BSO compared with those who did not (using combined retrospective and prospective data, HR = 0.70 [95% CI, 0.32 to 1.53]  $\nu$  0.26 [95% CI, 0.16 to 0.43];  $P_{\text{heterogeneity}} = .004$ ). This difference was less evident when the analysis was restricted to the prospective data (HR = 0.61 [95% CI, 0.23 to 1.65]  $\nu$  0.40 [95% CI, 0.12 to 1.32];  $P_{\text{heterogeneity}} = .3$ ). For *BRCA2* mutation carriers from the combined data, the corresponding HR estimates were 0.70 (95% CI, 0.27 to 1.82) versus 0.21 (95% CI, 0.12 to 0.36;  $P_{\text{heterogeneity}} = .08$ ), and from prospective data only, they were 0.76 (95% CI, 0.10 to 5.64) versus 0.33 (95% CI, 0.06 to 1.91;  $P_{\text{heterogeneity}} = .5$ ).



**Fig 1.** Hazard ratio (HR) estimates (represented by circles) and corresponding 95% CIs (represented by horizontal lines) for risk of contralateral breast cancer associated with tamoxifen use by women with *BRCA1* mutations (*BRCA1*) and *BRCA2* mutations (*BRCA2*). Separate estimates are provided based on combined retrospective and prospective data, overall, and by estrogen receptor (ER) status and on prospective data only.

## DISCUSSION

In this study, use of tamoxifen after first BC was associated with reduced risk of CBC for *BRCA1* and *BRCA2* mutation carriers based

**Table 4.** Analysis by ER Status of First Breast Cancer (combined retrospective and prospective data)

Variable	CBC										HR	95% CI	P
	Person-Years		No Tam		Tam		No.	% / Person-Year	No.	% / Person-Year			
	No Tam	Tam	No Tam	Tam	No Tam	Tam							
<i>BRCA1</i> mutation carriers													
ER negative	428	76	2,628	521	95	3.6	6	1.2	0.33†	0.13 to 0.79	.01		
ER positive	63	94	482	547	12	2.5	7	1.3	0.59*	0.23 to 1.52	.3		
Adjusted for ER status	491	170	3,110	1,068	107	3.4	13	1.2	0.44‡	0.25 to 0.85	.01		
<i>BRCA2</i> mutation carriers													
ER negative	75	25	531	264	14	2.6	3	1.1	0.44*	0.14 to 1.35	.2		
ER positive	97	234	558	1,428	22	3.9	14	1.0	0.30†	0.15 to 0.62	.001		
Adjusted for ER status	172	259	1,090	1,692	36	3.3	17	1.0	0.33‡	0.17 to 0.64	.001		

Abbreviations: CBC, contralateral breast cancer; ER, estrogen receptor; HR, hazard ratio; No Tam, did not take tamoxifen for first breast cancer; Tam, took tamoxifen for first breast cancer.

\*Adjusted for age at diagnosis (continuous).

†Adjusted for age at diagnosis (continuous) and country of residence (categorical: Australia, France, the Netherlands, United Kingdom, United States, other).

‡Adjusted for age at diagnosis (continuous), year of diagnosis (continuous), bilateral prophylactic oophorectomy (time varying), and country of residence (categorical, as in †).

on combined retrospective and prospective data. No differences in the reduction of risk associated with tamoxifen use were found by the ER status of the first BC. Our findings are consistent with those of other smaller observational studies that used retrospective data<sup>26-29</sup> and strengthen those findings.

Only one other prospective study has examined the association between tamoxifen use and BC risk for *BRCA1* and *BRCA2* mutation carriers. In the primary prevention setting, a substudy of a double-blind, placebo-controlled trial estimated the HRs for BC with tamoxifen use to be 1.67 (95% CI, 0.32 to 10.7) and 0.38 (95% CI, 0.06 to 1.56) for *BRCA1* and *BRCA2* mutation carriers, respectively<sup>15</sup>; the wide CIs suggest that these analyses were essentially uninformative. In the current study, when the analyses were restricted to prospective data only, there was only weak evidence that tamoxifen use is associated with reduced risk of CBC, with statistically nonsignificant HR estimates that were less than 1. The post hoc power for the analysis of prospective data only was limited; for each of *BRCA1* and *BRCA2* mutation carriers, there was 80% power at  $P < .05$  to detect HRs of 0.35 or less. Therefore, our statistically nonsignificant findings from analysis of the prospective data only should not necessarily be interpreted as a lack of confirmation of the highly significant results from the analysis of the pooled retrospective and prospective data, especially given the consistency in the HR estimates from the two analyses.

Previous studies have suggested that tamoxifen use only reduces the risk of ER-positive BC.<sup>7-11</sup> The majority (75% to 80%) of BCs arising in *BRCA2* mutation carriers are ER positive,<sup>30</sup> whereas most BCs arising in *BRCA1* mutation carriers are ER negative at the time of diagnosis.<sup>31</sup> Nevertheless, estrogen might be important in the pathogenesis of BCs in *BRCA1* mutation carriers, particularly given the observation that premenopausal bilateral oophorectomy is associated with reduced BC risk for *BRCA1* mutation carriers<sup>3</sup> and that preclinical data suggest that *BRCA1*-associated BCs may have an estrogen-responsive occult phase.<sup>32-34</sup> A link between estrogen and BC development in *BRCA1* mutation carriers is suggested by the finding that two single-nucleotide polymorphisms located close to *ESR1* (which encodes ER  $\alpha$ ) are associated with BC risk in *BRCA1* mutation carriers.<sup>35</sup> Furthermore, ER  $\beta$  is commonly expressed in BCs of *BRCA1* mutation carriers<sup>36,37</sup> and could be a target for tamoxifen.<sup>38</sup>

Thus there are important plausible mechanisms by which tamoxifen might prevent BC for both *BRCA1* and *BRCA2* mutation carriers.<sup>39</sup>

*BRCA1* and *BRCA2* mutation carriers have increased risks of both breast and high-grade serous gynecologic cancers.<sup>1</sup> Given that screening for the latter is ineffective,<sup>40-45</sup> many carriers elect to undergo premenopausal BSO, which dramatically reduces their risk of serous gynecologic cancer and is associated with about a halving of BC risk.<sup>4</sup> Therefore, in the primary prevention setting, an important clinical question is whether tamoxifen use might further reduce BC risk for mutation carriers who have had premenopausal BSO. Although we could not distinguish between pre- and postmenopausal BSO, our findings suggest that the inverse association between tamoxifen use and risk of CBC is stronger if ovaries are still in situ.

The strengths of the current study include the systematic data collection and the inclusion of women with an ER-negative first BC who received tamoxifen. The latter occurred because in many countries in the 1970s and early 1980s, adjuvant tamoxifen was prescribed to postmenopausal women with BC irrespective of hormone receptor status. Another strength of this study is the relatively large sample size, although, despite this, prospective data were limited.

A major limitation of the study is the nonrandomized design, which could have resulted in biased estimates owing to nonrandom use of tamoxifen. Compared with nonusers, tamoxifen users were significantly older and more likely to have had an ER-positive first BC, to have received chemotherapy, and to have had BSO, all features generally associated with reduced risk of CBC. However, adjustment for age at diagnosis and ER status of the first BC in multivariate analysis, as well as stratifying on ER status, made no substantive difference to the results. Sensitivity analyses showed little influence of adjustment for chemotherapy or histologic subtype. Thus it is unlikely that our finding of an association between tamoxifen use and reduced CBC is explained solely by nonrandom use of tamoxifen.

A randomized study to address this secondary prevention question is unlikely to be feasible given that (1) a substantial proportion of young mutation carriers undergo contralateral mastectomy after their first BC diagnosis,<sup>46,47</sup> and (2) it could only be conducted in women with ER-negative BC because adjuvant endocrine therapy (with tamoxifen and/or an aromatase inhibitor) is the standard of care for

**Table 5.** Association Between Tamoxifen Use and Risk of CBC: Sensitivity Analyses

Variable	No.	CBC	Person-Years	HR	95% CI
<i>BRCA1</i> mutation carriers					
Combined data*					
Main analysis	1,583	373	12,979	0.38	0.27 to 0.55
Premenopausal women	1,312	329	11,045	0.35	0.24 to 0.53
Postmenopausal women	234	35	1,699	0.51	0.20 to 1.29
Chemotherapy use known	950	194	7,306	0.41	0.26 to 0.67
Adjusted for chemotherapy	950	194	7,306	0.41	0.25 to 0.67
Histology of first BC known	1,047	244	8,076	0.33	0.20 to 0.53
Adjusted for histology	1,047	244	8,076	0.33	0.20 to 0.54
Adjusted for use of OC or HRT	1,583	373	12,979	0.38	0.27 to 0.55
Excluding women who used OC or HRT	1,419	345	11,536	0.35	0.24 to 0.51
Excluding women who used other endocrine therapy	1,574	372	12,940	0.38	0.27 to 0.55
Censoring at ipsilateral events after first BC	1,572	351	12,499	0.38	0.26 to 0.56
Censoring at diagnosis of non-breast primary cancers	1,580	364	12,495	0.35	0.24 to 0.51
Prospective data only†					
Main analysis	657	66	2,705	0.58	0.29 to 1.13
Premenopausal women	550	59	2,295	0.55	0.27 to 1.13
Postmenopausal women	93	5	357	—	
Chemotherapy use known	385	39	1,827	0.61	0.26 to 1.48
Adjusted for chemotherapy	385	39	1,827	0.60	0.25 to 1.47
Histology of first BC known	297	37	1,207	0.43	0.17 to 1.08
Adjusted for histology	297	37	1,207	0.45	0.18 to 1.14
Adjusted for use of OC or HRT	657	66	2,705	0.57	0.29 to 1.12
Excluding women who used OC or HRT	579	60	2,379	0.56	0.28 to 1.11
Excluding women who used other endocrine therapy	649	65	2,688	0.58	0.29 to 1.15
Censoring at ipsilateral events after first BC	629	60	2,588	0.58	0.28 to 1.18
Censoring at diagnosis of non-breast primary cancers	609	62	2,462	0.49	0.23 to 1.01
<i>BRCA2</i> mutation carriers					
Combined data*					
Main analysis	881	147	7,125	0.33	0.22 to 0.50
Premenopausal women	667	117	5,559	0.28	0.17 to 0.46
Postmenopausal women	190	26	1,382	0.41	0.18 to 0.92
Chemotherapy use known	514	78	4,117	0.39	0.22 to 0.70
Adjusted for chemotherapy	514	78	4,117	0.41	0.23 to 0.75
Histology of first BC known	559	95	4,212	0.43	0.26 to 0.72
Adjusted for histology	559	95	4,212	0.43	0.26 to 0.72
Adjusted for use of OC or HRT	881	147	7,124	0.32	0.22 to 0.49
Excluding women who used OC or HRT	803	136	6,377	0.35	0.23 to 0.53
Excluding women who used other endocrine therapy	863	146	7,051	0.33	0.22 to 0.49
Censoring at ipsilateral events after first BC	869	138	6,823	0.37	0.24 to 0.56
Censoring at diagnosis of non-breast primary cancers	880	143	6,943	0.32	0.21 to 0.48
Prospective data only†					
Main analysis	426	34	1,687	0.48	0.22 to 1.05
Premenopausal women	321	23	1,301	0.58	0.21 to 1.61
Postmenopausal women	91	8	348	0.35	0.08 to 1.48
Chemotherapy use known	256	26	1,182	0.43	0.16 to 1.15
Adjusted for chemotherapy	256	26	1,182	0.55	0.21 to 1.45
Histology of first BC known	195	23	692	0.79	0.31 to 2.05
Adjusted for histology	195	23	692	0.78	0.31 to 1.99
Adjusted for use of OC or HRT	426	34	1,687	0.45	0.21 to 0.99
Excluding women who used OC or HRT	386	32	1,512	0.46	0.21 to 1.04
Excluding women who used other endocrine therapy	412	33	1,650	0.47	0.21 to 1.05
Censoring at ipsilateral events after first BC	410	31	1,607	0.48	0.21 to 1.08
Censoring at diagnosis of non-breast primary cancers	412	32	1,586	0.46	0.20 to 1.05

Abbreviations: BC, breast cancer; CBC, contralateral breast cancer; HR, hazard ratio; HRT, hormone replacement therapy; OC, oral contraceptive.

\*Analysis adjusted for age at diagnosis (continuous), year of diagnosis (continuous), bilateral prophylactic oophorectomy (time varying), and country of residence (categorical).

†Analysis adjusted for age at diagnosis (continuous) and country (categorical).

ER-positive first BC. Certainly it would take many years to initiate and complete such a trial so that results would not be available for more than a decade.

The large proportion of participants in the current study with missing ER data for the first BC reduced the power of the corresponding stratified analysis. Nevertheless, because ER status is associated with both tamoxifen use and risk of CBC,<sup>22</sup> it is convincing that the stratified analyses gave consistent results.

The analyses of all data combined included prevalent cases of BC and therefore could be subject to survival bias. For this reason, we repeated the analyses using prospective data only. The results were consistent, but the inverse associations were somewhat attenuated.

Tamoxifen has not been widely prescribed for primary prevention of BC for *BRCA1* and *BRCA2* mutation carriers, in part because there has been inadequate evidence of efficacy.<sup>16</sup> The data presented here add to the current evidence base. Some clinicians might consider the statistically significant inverse association between tamoxifen use and development of CBC, seen in the combined analysis, as adequate reason to prescribe tamoxifen for BC prevention in *BRCA1* and *BRCA2* mutation carriers, despite the fact that the association was not confirmed by the less strongly powered prospective analysis. Others might not consider the evidence to be sufficient. Because mutations in *BRCA1* and *BRCA2* are associated with early-onset BC, premenopausal women are the most relevant group in this setting. Tamoxifen can cause hot flashes and night sweats, but for premenopausal women, the main serious adverse effect is deep venous thrombosis; the risk is similar to that from use of the combined oral contraceptive pill.<sup>48,49</sup> Endometrial cancer risk is increased for women who take tamoxifen for treatment of BC or for BC prevention. Some small retrospective observational studies have suggested increased endometrial cancer risk specifically for *BRCA1* and *BRCA2* mutation carriers who take tamoxifen,<sup>50,51</sup> although caution must be exercised in interpreting these findings.<sup>52</sup> Therefore, for *BRCA1* and *BRCA2* mutation carriers with breast tissue, particularly those who have not undergone premenopausal BSO, the option of tamoxifen for BC prevention should perhaps be discussed along with the evidence of benefits and

potential adverse effects, allowing women themselves to decide whether they wish to use the medication.

This study provides observational evidence that, for *BRCA1* and *BRCA2* mutation carriers, tamoxifen use for first BC might reduce the risk of CBC. Further follow-up of these cohorts will provide increased statistical power for prospective analyses and thus a more definitive answer to this important question in the future.

#### AUTHORS' DISCLOSURES OF POTENTIAL CONFLICTS OF INTEREST

The author(s) indicated no potential conflicts of interest.

#### AUTHOR CONTRIBUTIONS

**Conception and design:** Kelly-Anne Phillips, Roger L. Milne, Douglas F. Easton, Michael L. Friedlander, Nadine Andrieu, John L. Hopper

**Financial support:** Kelly-Anne Phillips, Melissa C. Southey, John L. Hopper

**Administrative support:** Prue C. Weideman, Kate Birch

**Provision of study materials or patients:** Kelly-Anne Phillips, Matti A.

Rookus, Mary B. Daly, Antonis C. Antoniou, Michael L. Friedlander, Sandra S. Buys, Sue Anne McLachlan, Esther M. John, Maartje J.

Hooning, Rob A.E.M. Tollenaar, Trinidad Caldes, Irene L. Andrulis,

Melissa C. Southey, Håkan L. Olsson, Edith Olah, John L. Hopper

**Collection and assembly of data:** Kelly-Anne Phillips, Matti A. Rookus, Mary B. Daly, Antonis C. Antoniou, Susan Peock, Debra Frost, Douglas

F. Easton, Steve Ellis, Michael L. Friedlander, Sandra S. Buys, Catherine

Noguès, Dominique Stoppa-Lyonnet, Valérie Bonadona, Sue Anne

McLachlan, Esther M. John, Maartje J. Hooning, Caroline Seynaeve, Rob

A.E.M. Tollenaar, David E. Goldgar, Mary Beth Terry, Trinidad Caldes,

Prue C. Weideman, Irene L. Andrulis, Christian F. Singer, Kate Birch,

Jacques Simard, Melissa C. Southey, Håkan L. Olsson, Anna Jakubowska,

Edith Olah, Anne-Marie Gerdes, Lenka Foretova, John L. Hopper

**Data analysis and interpretation:** Kelly-Anne Phillips, Roger L. Milne,

Matti A. Rookus, Antonis C. Antoniou, Douglas F. Easton, Michael L.

Friedlander, Pascal Pujol, Sue Anne McLachlan, Maartje J. Hooning,

John L. Hopper

**Manuscript writing:** All authors

**Final approval of manuscript:** All authors

#### REFERENCES

1. Antoniou A, Pharoah PD, Narod S, et al: Average risks of breast and ovarian cancer associated with *BRCA1* or *BRCA2* mutations detected in case Series unselected for family history: A combined analysis of 22 studies. *Am J Hum Genet* 72:1117-1130, 2003
2. Lostumbo L, Carbine NE, Wallace J: Prophylactic mastectomy for the prevention of breast cancer. *Cochrane Database Syst Rev* CD002748, 2010
3. Domchek SM, Friebel TM, Singer CF, et al: Association of risk-reducing surgery in *BRCA1* or *BRCA2* mutation carriers with cancer risk and mortality. *JAMA* 304:967-975, 2010
4. Rebbeck TR, Kauff ND, Domchek SM: Meta-analysis of risk reduction estimates associated with risk-reducing salpingo-oophorectomy in *BRCA1* or *BRCA2* mutation carriers. *J Natl Cancer Inst* 101:80-87, 2009
5. Phillips KA, Jenkins MA, Lindeman GJ, et al: Risk-reducing surgery, screening and chemoprevention practices of *BRCA1* and *BRCA2* mutation carriers: A prospective cohort study. *Clin Genet* 70:198-206, 2006

ers: A prospective cohort study. *Clin Genet* 70:198-206, 2006

6. Metcalfe KA, Birenbaum-Carmeli D, Lubinski J, et al: International variation in rates of uptake of preventive options in *BRCA1* and *BRCA2* mutation carriers. *Int J Cancer* 122:2017-2022, 2008

7. Powles TJ, Ashley S, Tidy A, et al: Twenty-year follow-up of the Royal Marsden randomized, double-blinded tamoxifen breast cancer prevention trial. *J Natl Cancer Inst* 99:283-290, 2007

8. Fisher B, Costantino JP, Wickerham DL, et al: Tamoxifen for the prevention of breast cancer: Current status of the National Surgical Adjuvant Breast and Bowel Project P-1 study. *J Natl Cancer Inst* 97:1652-1662, 2005

9. Veronesi U, Maisonneuve P, Rotmensz N, et al: Tamoxifen for the prevention of breast cancer: Late results of the Italian Randomized Tamoxifen Prevention Trial among women with hysterectomy. *J Natl Cancer Inst* 99:727-737, 2007

10. Cuzick J, Powles T, Veronesi U, et al: Overview of the main outcomes in breast-cancer prevention trials. *Lancet* 361:296-300, 2003

11. Cuzick J, Forbes JF, Sestak I, et al: Long-term results of tamoxifen prophylaxis for breast cancer:

96-month follow-up of the randomized IBIS-I trial. *J Natl Cancer Inst* 99:272-282, 2007

12. Nelson HD, Fu R, Griffin JC, et al: Systematic review: Comparative effectiveness of medications to reduce risk for primary breast cancer. *Ann Intern Med* 151:703-715, W-226-235, 2009

13. Rutqvist LE, Cedermark B, Glas U, et al: Contralateral primary tumors in breast cancer patients in a randomized trial of adjuvant tamoxifen therapy. *J Natl Cancer Inst* 83:1299-1306, 1991

14. Visvanathan K, Chlebowski RT, Hurlley P, et al: American Society of Clinical Oncology clinical practice guideline update on the use of pharmacologic interventions including tamoxifen, raloxifene, and aromatase inhibition for breast cancer risk reduction. *J Clin Oncol* 27:3235-3258, 2009

15. King MC, Wiedan S, Hale K, et al: Tamoxifen and breast cancer incidence among women with inherited mutations in *BRCA1* and *BRCA2*: National Surgical Adjuvant Breast and Bowel Project (NSABP-P1) Breast Cancer Prevention Trial. *JAMA* 286:2251-2256, 2001

16. Keogh LA, Hopper JL, Rosenthal D, et al: Australian clinicians and chemoprevention for women at

high familial risk for breast cancer. *Hered Cancer Clin Pract* 7:9, 2009

17. Goldgar D, Bonnardel C, Renard H, et al: The International BRCA1/2 Carrier Cohort Study: Purpose, rationale, and study design. <http://breast-cancer-research.com/content/2/6/E010>

18. Mann GJ, Thorne H, Balleine RL, et al: Analysis of cancer risk and BRCA1 and BRCA2 mutation prevalence in the kConFab familial breast cancer resource. *Breast Cancer Res* 8:R12, 2006

19. John EM, Hopper JL, Beck JC, et al: The Breast Cancer Family Registry: An infrastructure for cooperative multinational, interdisciplinary and translational studies of the genetic epidemiology of breast cancer. *Breast Cancer Res* 6:R375-R389, 2004

20. Dean AG, Sullivan KM, Soe MM: OpenEpi: Open Source Epidemiologic Statistics for Public Health, Version 3.01, updated April 6, 2013. [www.OpenEpi.com](http://www.OpenEpi.com)

21. Chen Y, Thompson W, Semenciw R, et al: Epidemiology of contralateral breast cancer. *Cancer Epidemiol Biomarkers Prev* 8:855-861, 1999

22. Kurian AW, McClure LA, John EM, et al: Second primary breast cancer occurrence according to hormone receptor status. *J Natl Cancer Inst* 101:1058-1065, 2009

23. Malone KE, Begg CB, Haile RW, et al: Population-based study of the risk of second primary contralateral breast cancer associated with carrying a mutation in BRCA1 or BRCA2. *J Clin Oncol* 28:2404-2410, 2010

24. Metcalfe K, Gershman S, Lynch HT, et al: Predictors of contralateral breast cancer in BRCA1 and BRCA2 mutation carriers. *Br J Cancer* 104:1384-1392, 2011

25. Graeser MK, Engel C, Rhiem K, et al: Contralateral breast cancer risk in BRCA1 and BRCA2 mutation carriers. *J Clin Oncol* 27:5887-5892, 2009

26. Gronwald J, Tung N, Foulkes WD, et al: Tamoxifen and contralateral breast cancer in BRCA1 and BRCA2 carriers: An update. *Int J Cancer* 118:2281-2284, 2006

27. Reding KW, Bernstein JL, Langholz BM, et al: Adjuvant systemic therapy for breast cancer in BRCA1/BRCA2 mutation carriers in a population-based study of risk of contralateral breast cancer. *Breast Cancer Res Treat* 123:491-498, 2010

28. Pierce LJ, Levin AM, Rebbeck TR, et al: Ten-year multi-institutional results of breast-conserving surgery and radiotherapy in BRCA1/2-associated stage I/II breast cancer. *J Clin Oncol* 24:2437-2443, 2006

29. Metcalfe K, Lynch HT, Ghadirian P, et al: Contralateral breast cancer in BRCA1 and BRCA2 mutation carriers. *J Clin Oncol* 22:2328-2335, 2004

30. Mavaddat N, Barrowdale D, Andrulis IL, et al: Pathology of breast and ovarian cancers among BRCA1 and BRCA2 mutation carriers: Results from the Consortium of Investigators of Modifiers of BRCA1/2 (CIMBA). *Cancer Epidemiol Biomarkers Prev* 21:134-147, 2012

31. Phillips KA: Immunophenotypic and pathologic differences between BRCA1 and BRCA2 hereditary breast cancers. *J Clin Oncol* 18:107S-12S, 2000

32. Asselin-Labat ML, Vaillant F, Sheridan JM, et al: Control of mammary stem cell function by steroid hormone signalling. *Nature* 465:798-802, 2010

33. Li W, Xiao C, Vonderhaar BK, et al: A role of estrogen/ERalpha signaling in BRCA1-associated tissue-specific tumor formation. *Oncogene* 26:7204-7212, 2007

34. Jones LP, Tilli MT, Assefnia S, et al: Activation of estrogen signaling pathways collaborates with loss of Brca1 to promote development of ERalpha-negative and ERalpha-positive mammary preneoplasia and cancer. *Oncogene* 27:794-802, 2008

35. Antoniou AC, Kartsonaki C, Sinilnikova OM, et al: Common alleles at 6q25.1 and 1p11.2 are associated with breast cancer risk for BRCA1 and BRCA2 mutation carriers. *Hum Mol Genet* 20:3304-3321, 2011

36. Daidone MG, Veneroni S, Cappelletti V, et al: Estrogen receptor-beta expression in hereditary breast cancer. *J Clin Oncol* 20:3752-3753, 2002; author reply 3753

37. Litwiniuk MM, Roznowski K, Filas V, et al: Expression of estrogen receptor beta in the breast carcinoma of BRCA1 mutation carriers. *BMC Cancer* 8:100, 2008

38. Murphy LC, Watson PH: Is oestrogen receptor-beta a predictor of endocrine therapy responsiveness in human breast cancer? *Endocr Relat Cancer* 13:327-334, 2006

39. Noruzinia M, Coupier I, Pujol P: Is BRCA1/BRCA2-related breast carcinogenesis estrogen dependent? *Cancer* 104:1567-1574, 2005

40. Meeuwissen PA, Seynaeve C, Brekelmans CT, et al: Outcome of surveillance and prophylactic salpingo-oophorectomy in asymptomatic women at high risk for ovarian cancer. *Gynecol Oncol* 97:476-482, 2005

41. Oei AL, Massuger LF, Bulten J, et al: Surveillance of women at high risk for hereditary ovarian cancer is inefficient. *Br J Cancer* 94:814-819, 2006

42. Woodward ER, Sleightholme HV, Considine AM, et al: Annual surveillance by CA125 and transvaginal ultrasound for ovarian cancer in both high-risk and population risk women is ineffective. *BJOG* 114:1500-1509, 2007

43. Stirling D, Evans DG, Pichert G, et al: Screening for familial ovarian cancer: Failure of current protocols to detect ovarian cancer at an early stage according to the International Federation of Gynecology and Obstetrics system. *J Clin Oncol* 23:5588-5596, 2005

44. van der Velde NM, Mourits MJ, Arts HJ, et al: Time to stop ovarian cancer screening in BRCA1/2 mutation carriers? *Int J Cancer* 124:919-923, 2009

45. Cancer Australia: Surveillance of women at high or potentially high risk of ovarian cancer, 12/2009. <http://canceraustralia.gov.au/about-us/position-statements/surveillance-women-high-or-potentially-high-risk>

46. Metcalfe KA, Lubinski J, Ghadirian P, et al: Predictors of contralateral prophylactic mastectomy in women with a BRCA1 or BRCA2 mutation: The Hereditary Breast Cancer Clinical Study Group. *J Clin Oncol* 26:1093-1097, 2008

47. Kiely BE, Jenkins MA, McKinley JM, et al: Contralateral risk-reducing mastectomy in BRCA1 and BRCA2 mutation carriers and other high-risk women in the Kathleen Cuninghame Foundation Consortium for Research into Familial Breast Cancer (kConFab). *Breast Cancer Res Treat* 120:715-723, 2010

48. Nelson HD, Huffman LH, Fu R, et al: Genetic risk assessment and BRCA mutation testing for breast and ovarian cancer susceptibility: Systematic evidence review for the US Preventive Services Task Force. *Ann Intern Med* 143:362-379, 2005

49. Harvey SL, Francis JE, McBride AJ, et al: Medication to prevent breast cancer: Too much to swallow? *Med J Aust* 195:646-649, 2011

50. Beiner ME, Finch A, Rosen B, et al: The risk of endometrial cancer in women with BRCA1 and BRCA2 mutations: A prospective study. *Gynecol Oncol* 104:7-10, 2007

51. Duffy DL, Antill YC, Stewart CJ, et al: Report of endometrial cancer in Australian BRCA1 and BRCA2 mutation-positive families. *Twin Res Hum Genet* 14:111-118, 2011

52. Lu KH, Kauff ND: Does a BRCA mutation plus tamoxifen equal hysterectomy? *Gynecol Oncol* 104:3-4, 2007

## Affiliations

Kelly-Anne Phillips, Sue Anne McLachlan, Prue C. Weideman, and Kate Birch, Peter MacCallum Cancer Centre; Kelly-Anne Phillips, Roger L. Milne, Sue Anne McLachlan, Melissa C. Southey, and John L. Hopper, University of Melbourne; Sue Anne McLachlan, St Vincent's Hospital, Melbourne, Victoria; Michael L. Friedlander, Prince of Wales Hospital, Randwick, New South Wales, Australia; Roger L. Milne, Spanish National Cancer Research Centre; Trinidad Caldes, Hospital Clinico San Carlos, Instituto de Investigación Sanitaria San Carlos, Madrid, Spain; Matti A. Rookus, Netherlands Cancer Institute, Amsterdam; Maartje Hoening and Caroline Seynaeve, Erasmus University Medical Center—Daniel den Hoed Cancer Center, Rotterdam; Rob A.E.M. Tollenaar, Leiden University Medical Centre, Leiden, the Netherlands; Mary B. Daly, Fox Chase Cancer Center, Philadelphia, PA; Antonis C. Antoniou, Susan Peock, Debra Frost, Douglas F. Easton, Steve Ellis, University of Cambridge, Cambridge, United Kingdom; Sandra S. Buys and David Goldgar, Huntsman Cancer Institute at the University of Utah, UT; Nadine Andrieu and Dominique Stoppa-Lyonnet, Institut Curie; Nadine Andrieu, L'Institut National de la Santé et de la Recherche Médicale, U900; Dominique Stoppa-Lyonnet, L'Institut National de la Santé et de la Recherche Médicale, U830; Dominique Stoppa-Lyonnet, Université Paris-Descartes, Paris; Nadine Andrieu, Mines ParisTech, Fontainebleau; Catherine Noguès, Institut Curie, Hôpital René Huguenin, St Cloud; Valérie Bonadona, Université Lyon 1; Valérie Bonadona, Centre National de la Recherche Scientifique Unité Mixte de Recherche 5558; Valérie Bonadona, Centre Léon Bérard, Lyon; Pascal Pujol, Centre Hospitalier Universitaire Arnaud de Villeneuve; Pascal Pujol, L'Institut National de la Santé et de la Recherche Médicale 896, Centre de Recherche en Cancérologie de Marseille Val d'Aurelle, Montpellier, France; Esther M. John, Cancer



Prevention Institute of California, Fremont; Esther M. John, Stanford University School of Medicine, Stanford, CA; Mary Beth Terry, Columbia University, New York, NY; Irene L. Andrulis, University of Toronto, Toronto, Ontario; Jacques Simard, Centre Hospitalier Universitaire de Québec and Laval University, Québec City, Québec, Canada; Christian F. Singer, Medical University of Vienna, Vienna, Austria; Håkan Olsson, Lund University, Lund, Sweden; Anna Jakubowska, Pomeranian Medical University, Szczecin, Poland; Edith Olah, National Institute of Oncology, Budapest, Hungary; Anne-Marie Gerdes, Rigshospitalet and Copenhagen University, Copenhagen, Denmark; and Lenka Foretova, Masaryk Memorial Cancer Institute, Brno, Czech Republic.

### Support

Supported by the (Australian) National Breast Cancer Foundation and Cancer Australia Grant No. 628333. International *BRCA1* and *BRCA2* Carrier Cohort Study (IBCCS) –Epidemiological Study of *BRCA1* and *BRCA2* Mutation Carriers, UK (EMBRACE) is supported by Cancer Research UK Grants No. C1287/A10118 and C1287/A11990. IBCCS–Gene Etude Prospective Sein Ovaire, France (GENEPSO) is supported by the Fondation de France and the Ligue Nationale Contre le Cancer. IBCCS–Hereditary Breast and Ovarian Cancer Research Group Netherlands (HEBON) is supported by Dutch Cancer Society Grants No. NKI1998 1854, NKI2004-3088, NKI2007-3756 and the Netherlands Organization for Scientific Research Grant No. NWO/91109024. IBCCS–Interdisciplinary Health Research Internal Team Breast Cancer Susceptibility Study (INHERIT) was supported by the Canadian Institutes of Health Research for the INHERIT BRCA research program (Grant No. CRT 43822) and Canadian Institute Health Research (CIHR) Team in Familial Risks of Breast Cancer program (Grant No. CRN 87521), the Canadian Breast Cancer Research Alliance (Grant No. 019511), and the Ministry of Economic Development, Innovation and Export Trade (Grant No. PSR-SIIRI 701). IBCCS–National Institute of Oncology (NIO) Hungary was funded by European Against Cancer (subcontract between International Agency for Research on Cancer Lyon and NIO Budapest). This study at NIO, Budapest, Hungary, was supported in part by Norwegian European Economic Area (EEA) Financial Mechanism (Grant No. HU0115/NA/2008-3/ÖP-9). IBCCS–Brno, Masaryk Memorial Cancer Institute (MMCI), Czech Republic was supported by IBCCS and by the European Regional Development Fund and the State Budget of the Czech Republic (Regional Center for Applied Molecular Oncology [RECAMO], Grant No. CZ.1.05/2.1.00/03.0101). IBCCS–Molecular Oncology Laboratory, Madrid (MOL) was supported by Grant No. RD06/0020/0021 from Red Tematica Investigacion Cooperative en Cancer (RTICC; ISCIII), Spanish Ministry of Economy and Competitiveness. The Kathleen Cuninghame Foundation Consortium for Research into Familial Breast Cancer (kConFab) and the kConFab Follow-Up Study are supported by grants from the National Breast Cancer Foundation, the National Health and Medical Research Council, and by the Queensland Cancer Fund, the Cancer Councils of New South Wales, Victoria, Tasmania, and South Australia, and the Cancer Foundation of Western Australia. The Breast Cancer Family Registry (BCFR) was supported by the National Cancer Institute, National Institutes of Health under Grant No. UMI CA164920 and through cooperative agreements with members of the BCFR and principal investigators, including Cancer Care Ontario (Grant No. U01 CA69467), Cancer Prevention Institute of California (Grant No. U01 CA69417), Columbia University (Grant No. U01 CA69398), Fox Chase Cancer Center (Grant No. U01 CA69631), Huntsman Cancer Institute (Grant No. U01 CA69446), the University of Melbourne (Grant No. U01 CA69638), and Georgetown University Medical Center Informatics Support Center (Grant No. HHSN261200900010C).



### Acknowledgment

We thank all the participants in these studies and all the researchers, clinicians, technicians, and administrative staff who have enabled this work to be carried out. In particular, the International *BRCA1* and *BRCA2* Carrier Cohort Study (IBCCS) acknowledges Marie-José Blom for her solid work as the central data manager of this collaborative study; IBCCS–Interdisciplinary Health Research Internal Team Breast Cancer Susceptibility Study (INHERIT) acknowledges Martine Dumont for managing epidemiologic and pathologic data collected by Cancer Genomics Laboratory research nurses, Quebec City, Canada; IBCCS–Brno, Masaryk Memorial Cancer Institute (MMCI), Czech Republic, acknowledges Dita Hanouskova, Jitka Berkovcova, and other staff members for their consulting work with families, data collection, and data entry; IBCCS Poland acknowledges all members and collaborators of the International Hereditary Cancer Centre, Szczecin, Poland; IBCCS–National Institute of Oncology (NIO), Hungary, acknowledges Miklos Kasler for his support of the study and Marie Balogh Kovacs for her help in submission of IBCCS questionnaires; T.C. acknowledges Pedro Perez Seguar, MD, for his clinical work; the Kathleen Cuninghame Foundation Consortium for Research into Familial Breast Cancer (kConFab) acknowledges Lucy Stanhope, Heather Thorne, Eveline Niedermayr, the kConFab research nurses and staff, the heads and staff of the Family Cancer Clinics, and the families for their contributions to the resource.

### Appendix

K.-A.P. is a National Breast Cancer Foundation Practitioner Fellow; A.C.A. is a Cancer Research–United Kingdom Senior Cancer Research Fellow (C12292/A11174); D.F.E. is a Cancer Research–United Kingdom Principal Research Fellow; I.L.A. is the Anne and Max Tanenbaum Chair in Molecular Medicine at Mount Sinai Hospital; J.S. is Chairholder of the Canada Research Chair in Oncogenetics; J.L.H. is an Australia Fellow; M.C.S. is a Senior Research Fellow of the National Health and Medical Research Council of Australia; M.C.S. and J.L.H. are Group Leaders of the Victorian Breast Cancer Research Consortium.

*Epidemiological Study of BRCA1 and BRCA2 Mutation Carriers, UK (EMBRACE) Collaborating Centers are as follows:* Coordinating Centre, Cambridge: Susan Peock, Debra Frost, Steve Ellis, Elena Fineberg, Radka Platte. North of Scotland Regional Genetics Service, Aberdeen: Zosia Miedzbrodzka, Helen Gregory. Northern Ireland Regional Genetics Service, Belfast: Patrick Morrison, Lisa Jeffers. West Midlands Regional Clinical Genetics Service, Birmingham: Trevor Cole, Kai-ren Ong, Jonathan Hoffman. South West Regional Genetics Service, Bristol: Alan Donaldson, Margaret James. East Anglian Regional Genetics Service, Cambridge: Marc Tischkowitz, Joan Paterson, Amy Taylor. Medical Genetics Services for Wales, Cardiff: Alexandra Murray, Mark T. Rogers, Emma McCann. St James's Hospital, Dublin & National Centre for Medical Genetics, Dublin: M. John Kennedy, David Barton. South East of Scotland Regional Genetics Service, Edinburgh: Mary Porteous, Sarah Drummond. Peninsula Clinical Genetics Service, Exeter: Carole Brewer, Emma Kivuva, Anne Searle, Selina Goodman, Kathryn Hill. West of Scotland Regional Genetics Service, Glasgow: Rosemarie Davidson, Victoria Murday, Nicola Bradshaw, Lesley Snadden, Mark Longmuir, Catherine Watt, Sarah Gibson, Eshika Haque, Ed Tobias, Alexis Duncan. South East Thames Regional Genetics Service, Guy's Hospital London: Louise Izatt, Chris Jacobs, Caroline Langman. North West Thames Regional Genetics Service, Harrow: Angela Brady, Huw Dorkins, Athalie Melville, Kashmir Randhawa. Leicestershire Clinical Genetics Service, Leicester: Julian Barwell. Yorkshire Regional Genetics Service, Leeds: Julian Adlard, Gemma Serra-Feliu. Cheshire & Merseyside Clinical Genetics Service, Liverpool: Ian Ellis, Catherine Houghton. Manchester Regional Genetics Service, Manchester: D. Gareth Evans, Fiona Laloo, Jane Taylor. North East Thames Regional Genetics Service, NE Thames, London: Lucy Side, Alison Male, Cheryl Berlin. Nottingham Centre for Medical Genetics, Nottingham: Jacqueline Eason, Rebecca Collier. Northern Clinical Genetics Service, Newcastle: Fiona Douglas, Oonagh Claber, Irene Jobson. Oxford Regional Genetics Service, Oxford: Lisa Walker, Diane McLeod, Dorothy Halliday, Sarah Durell, Barbara Stayner. The Institute of Cancer Research and Royal Marsden NHS Foundation Trust: Rosalind A. Eeles, Susan Shanley, Nazneen Rahman, Richard Houlston, Elizabeth Bancroft, Elizabeth Page, Audrey Arden-Jones, Kelly Kohut, Jennifer Wiggins, Elena Castro, Emma Killick, Sue Martin, Gillian Rea, Anjana Kulkarni. North Trent Clinical Genetics Service, Sheffield: Jackie Cook, Oliver Quarrell, Cathryn Bardsley. South West Thames Regional Genetics Service, London: Shirley Hodgson, Sheila Goff, Glen Brice, Lizzie Winchester, Charlotte Eddy, Vishakha Tripathi, Virginia Attard, Anna Lehmann. Wessex Clinical Genetics Service, Princess Anne Hospital, Southampton: Diana Eccles, Anneke Lucassen, Gillian Crawford, Donna McBride, Sarah Smalley. D. Gareth Evans and Fiona Laloo are supported by an NIHR grant to the Biomedical Research Centre, Manchester. The Investigators at The Institute of Cancer Research and The Royal Marsden NHS Foundation Trust are supported by an NIHR grant to the Biomedical Research Centre at The Institute of Cancer Research and The Royal Marsden NHS Foundation Trust. Rosalind A. Eeles and Elizabeth Bancroft are supported by Cancer Research United Kingdom (Grant C5047/A8385).

*The Hereditary Breast and Ovarian Cancer Research Group Netherlands (HEBON) consists of the following Collaborating Centers:* Coordinating center: Netherlands Cancer Institute, Amsterdam, NL: M.A. Rookus, F.B.L. Hogervorst, F.E. van Leeuwen, S. Verhoef, M.K. Schmidt, J.L. de Lange; Erasmus Medical Center, Rotterdam, NL: J.M. Collée, A.M.W. van den Ouweland, M.J. Hoening, C. Seynaeve, C.H.M. van Deurzen; Leiden University Medical Center, NL: C.J. van Asperen, J.T. Wijnen, R.A.E.M. Tollenaar, P. Devilee, T.C.T.E.F. van Cronenburg; Radboud University Nijmegen Medical Center, NL: C.M. Kets, A.R. Mensenkamp; University Medical Center Utrecht, NL: M.G.E.M. Ausems, R.B. van der Luijt; Amsterdam Medical Center, NL: C.M. Aalfs, T.A.M. van Os; VU University Medical Center, Amsterdam, NL: J.J.P. Gille, Q. Waisfisz, H.E.J. Meijers-Heijboer; University Hospital Maastricht, NL: E.B. Gómez-García, M.J. Blok; University Medical Center Groningen, NL: J.C. Oosterwijk, A.H. van der Hout, M.J. Mourits, G.H. de Bock. The Netherlands Foundation for the detection of hereditary tumors, Leiden, NL: H.F. Vasen.

*Gene Etude Prospective Sein Ovaire, France (GENEPSO) Collaborating Centers are as follows:* Coordinating Center, Hôpital René Huguenin/Institut Curie, Saint Cloud: Catherine Noguès, Emmanuelle Fourme, Rosette Lidereau; Etienne Rouleau, Sandrine Caputo, Shirley Wakselman, Collaborating Centers: Institut Curie, Paris: Dominique Stoppa-Lyonnet, Marion Gauthier-Villars; Bruno Buecher, Institut Gustave Roussy, Villejuif :Olivier Caron; Hôpital René Huguenin/Institut Curie, Saint Cloud: Catherine Noguès, Liliane Demange; Centre Paul Strauss, Strasbourg: Jean-Pierre Fricker; Centre Léon Bérard, Lyon: Christine Lasset, Valérie Bonadona; Centre François Baclesse, Caen: Pascaline Berthet; Hôpital d'Enfants CHU Dijon – Centre Georges François Leclerc, Dijon: Laurence Faivre; Centre Alexis Vautrin, Vandoeuvre-les-Nancy: Elisabeth Luporsi; Centre Antoine Lacassagne, Nice: Marc Frénay; Institut Claudius Regaud, Toulouse: Laurence Gladiéff; Réseau Oncogénétique Poitou Charente, Niort: Paul Gesta; Institut Paoli-Calmettes, Marseille: Hagay Sobol, François Eisinger, Laetitia Huiart; Institut Bergonié, Bordeaux: Michel Longy, Centre Eugène Marquis, Rennes: Catherine Dugast; GH Pitié Salpêtrière, Paris: Chrystelle Colas, Florent Soubrier; CHU Arnaud de Villeneuve, Montpellier: Isabelle Coupier, Pascal Pujol; Centres Paul Papin, and Catherine de Siègne, Angers, Nantes: Alain Lortholary; Centre Oscar Lambret, Lille: Philippe Vennin, Claude Adenis; Institut Jean Godinot, Reims: Tan Dat Nguyen; Centre René Gauducheau, Nantes: Capucine Delnatte; Centre Henri Becquerel, Rouen: Annick Rossi, Julie Tinat, Isabelle Tennevet; Hôpital Civil, Strasbourg: Jean-Marc Limacher; Christine Maugard; Hôpital Centre Jean Perrin, Clermont-Ferrand: Yves-Jean Bignon; Polyclinique Courlancy, Reims: Liliane Demange; Clinique Sainte Catherine, Avignon: Hélène Dreyfus; Hôpital Saint-Louis, Paris: Odile Cohen-Haguénauer; CHRU Dupuytren, Limoges: Brigitte Gilbert; Couple-Enfant-CHU de Grenoble: Dominique Leroux; Hôpital de la Timone, Marseille: Hélène Zattara-Cannoni; Inserm U900, Ecole des Mines de Paris, ParisTech, Service de Biostatistiques, Institut Curie, Paris: Nadine Andrieu; Inserm U535, Villejuif: Catherine Bonaïti; Inserm U379, Marseille: Claire Julian-Reynier; Inserm.